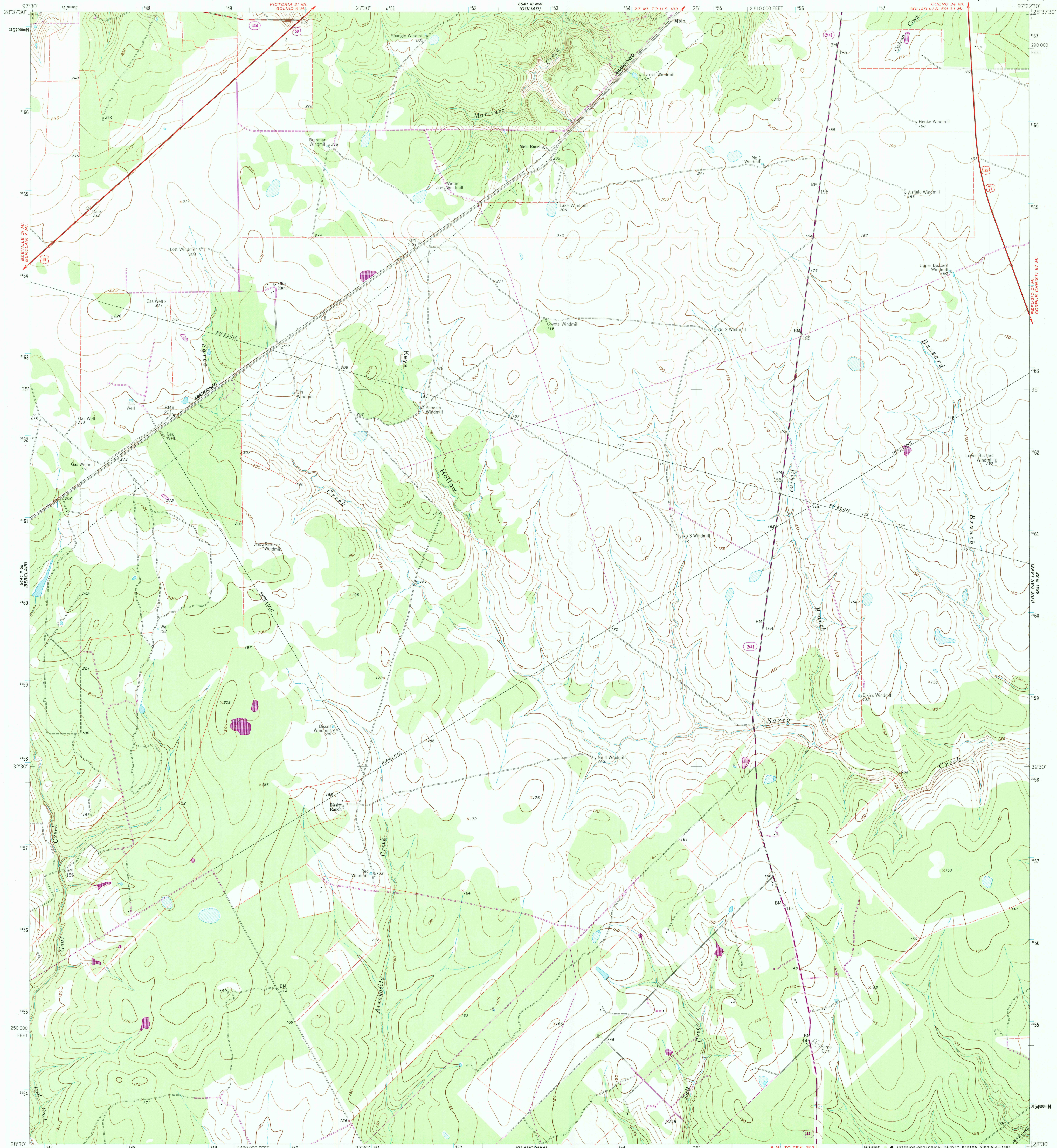


UNITED STATES
DEPARTMENT OF THE INTERIOR
GEOLOGICAL SURVEY

MELO QUADRANGLE
TEXAS-GOLIAD CO.
7.5 MINUTE SERIES (TOPOGRAPHIC)



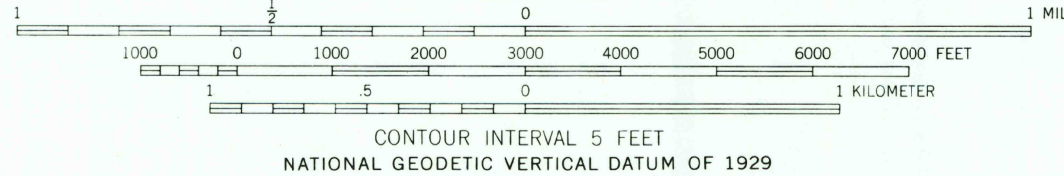
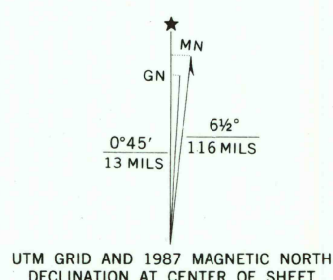
Mapped, edited, and published by the Geological Survey
Control by USGS and NOS/NOAA

Planimetry by photogrammetric methods from aerial photographs
taken 1959. Topography by planimetric surveys 1962
Polyconic projection: 1927 North American Datum
10,000-foot grid based on Texas coordinate system, south central zone
1000-meter Universal Transverse Mercator grid ticks,
zone 14, shown in blue

Fine red dashed lines indicate selected fence lines

To place on the predicted North American Datum 1983
move the projection lines 24 meters south and
26 meters east as shown by dashed corner ticks

Revisions shown in purple and woodland compiled from
aerial photographs taken 1981 and other source data
This information not field checked. Map edited 1987



THIS MAP COMPLIES WITH NATIONAL MAP ACCURACY STANDARDS
FOR SALE BY U.S. GEOLOGICAL SURVEY
DENVER, COLORADO 80225, OR RESTON, VIRGINIA 22092
A FOLDER DESCRIBING TOPOGRAPHIC MAPS AND SYMBOLS IS AVAILABLE ON REQUEST



ROAD CLASSIFICATION

Heavy-duty	Light-duty
Medium-duty	Unimproved dirt

U.S. Route
State Route

USGS NMD HISTORICAL MAP
FEB - 1988
REC'D FILE COPY

MELO, TEX.
28097-E4-TF-024
1982
PHOTOREVISED 1987
DMA 6541 III SW-SERIES V882