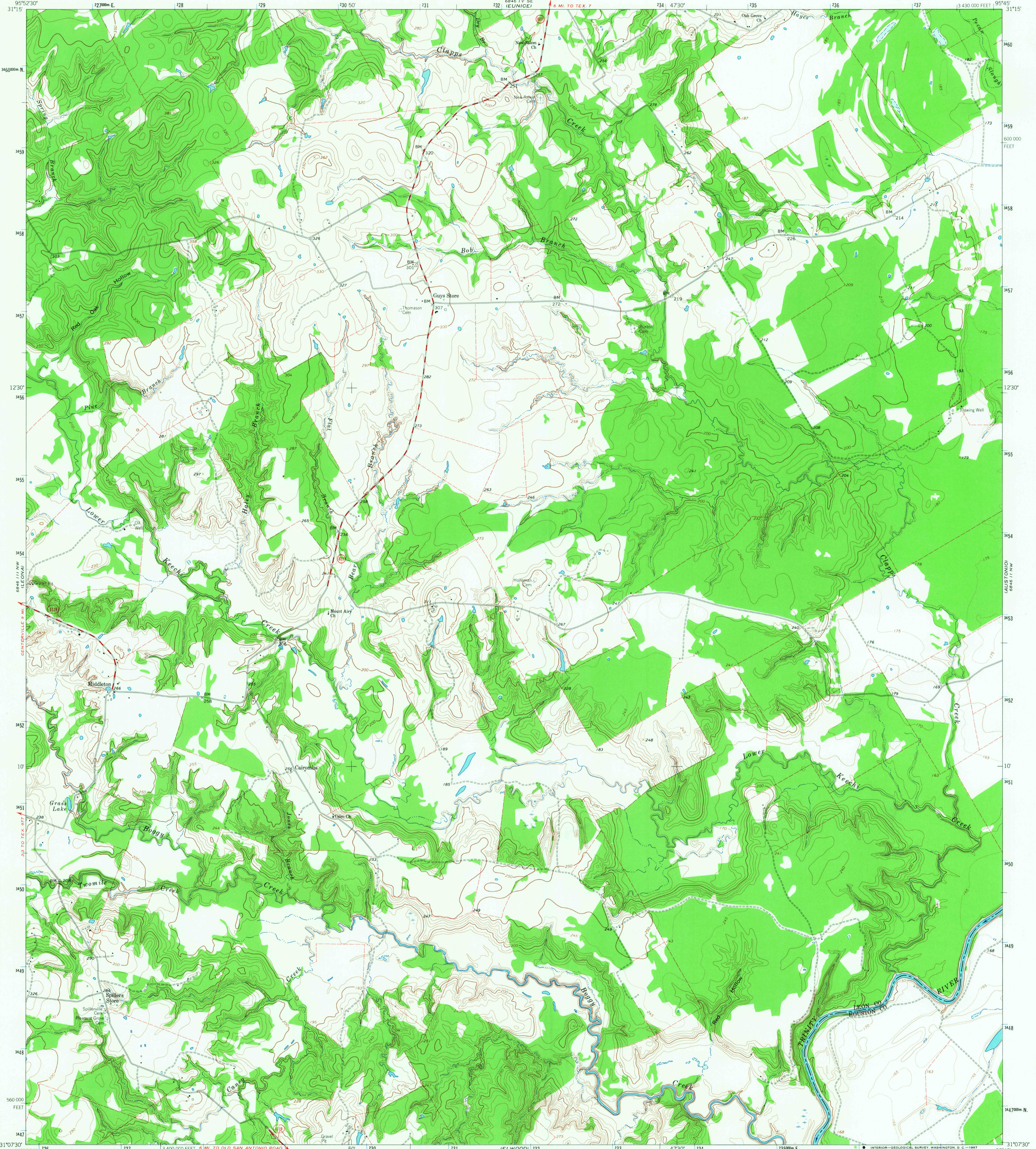


6846 11 NW
10675 (VENEVILLE)

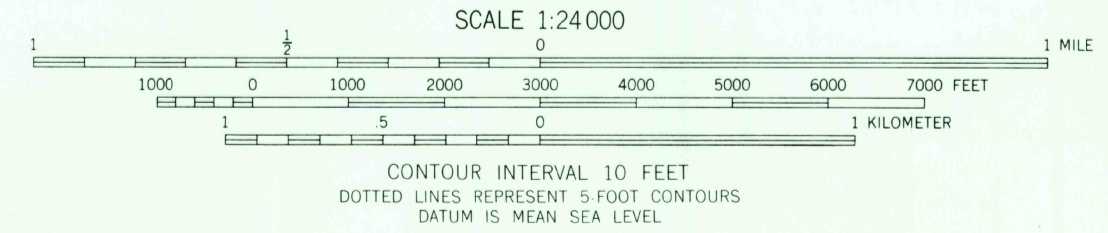
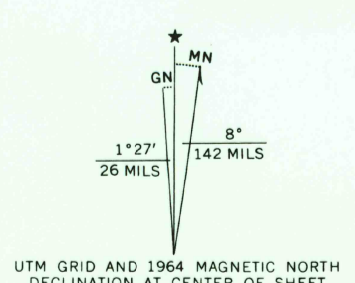
6846 9 W
10675 (HALLS BLUFF)

UNITED STATES
DEPARTMENT OF THE INTERIOR
GEOLOGICAL SURVEY

MIDDLETON QUADRANGLE
TEXAS
7.5 MINUTE SERIES (TOPOGRAPHIC)



Mapped, edited, and published by the Geological Survey
Control by USGS and USC&GS
Topography by photogrammetric methods from aerial photographs taken 1963. Field checked 1964
Polyconic projection. 1927 North American datum
10,000-foot grid based on Texas coordinate system, central zone
1000 meter Universal Transverse Mercator grid ticks, zone 15, shown in blue
Fine red dashed lines indicate selected fence lines



CONTOUR INTERVAL 10 FEET
DOTTED LINES REPRESENT 5 FOOT CONTOURS
DATUM IS MEAN SEA LEVEL

ROAD CLASSIFICATION
Medium-duty ——— Light-duty ———
Unimproved dirt - - - - -
State Route ○



U.S.G.S. MIDDLETON, TEX. APR 4 1967
TOPOGRAPHIC DIVISION
N3107.5-W9545.7.5
1964
AMS 6846 111 NE-SERIES V882

THIS MAP COMPLIES WITH NATIONAL MAP ACCURACY STANDARDS
FOR SALE BY U.S. GEOLOGICAL SURVEY, DENVER, COLORADO 80225, OR WASHINGTON, D.C. 20242
A FOLDER DESCRIBING TOPOGRAPHIC MAPS AND SYMBOLS IS AVAILABLE ON REQUEST

RETURN TO:
USGS AND HISTORICAL MAP ARCHIVES

2725