

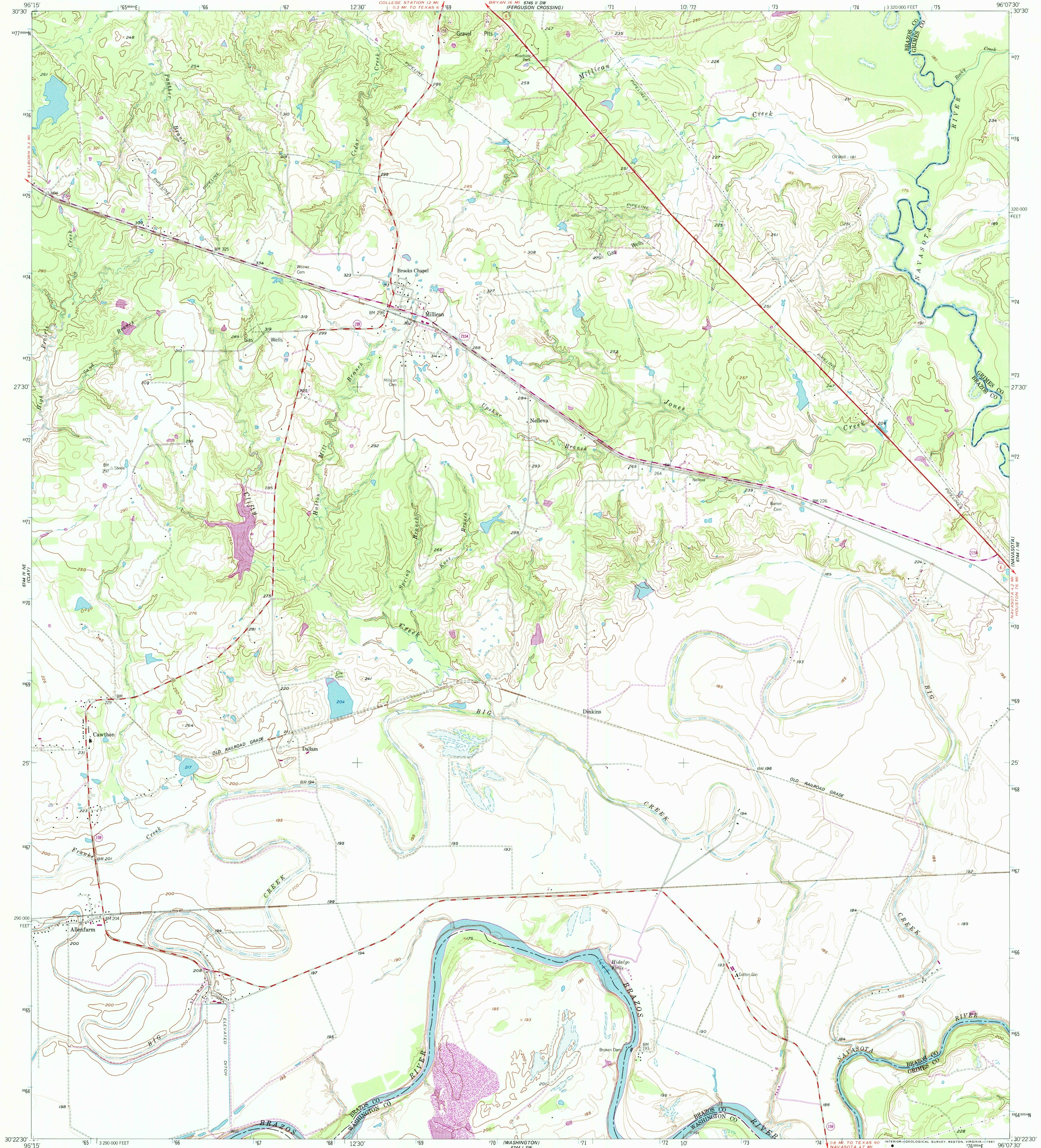
Scale 1:24,000
(NAD 83)

UNITED STATES
DEPARTMENT OF THE INTERIOR
GEOLOGICAL SURVEY

STATE OF TEXAS
BOARD OF WATER ENGINEERS
6745 I SW
(FERGUSON CROSSING)

MILLICAN QUADRANGLE
TEXAS
7.5 MINUTE SERIES (TOPOGRAPHIC)

Scale 1:24,000
(NAD 83)



Mapped, edited, and published by the Geological Survey

Control by USGS and NOS/NOAA

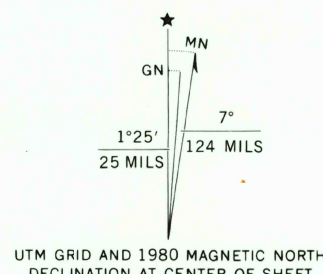
Topography by photogrammetric methods from aerial photographs taken 1958. Field checked 1959

Polyconic projection. 1927 North American Datum 10,000-foot grid based on Texas coordinate system, central zone

1000-meter Universal Transverse Mercator grid ticks, zone 14, shown in blue

The difference between 1927 North American Datum and North American Datum of 1983 (NAD 83) for 7.5 minute intersections is given in USGS Bulletin 1875. The NAD 83 is shown by dashed corner ticks

Unchecked elevations are shown in brown



Revisions shown in purple and woodland compiled from aerial photographs taken 1977 and other source data. This information not field checked. Map edited 1980



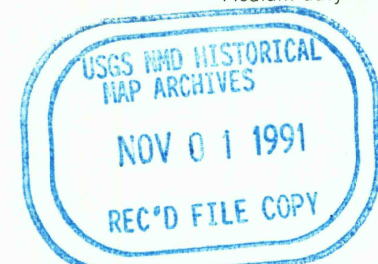
CONTOUR INTERVAL 10 FEET
DOTTED LINES REPRESENT 5-FOOT CONTOURS
NATIONAL GEODETIC VERTICAL DATUM OF 1929

THIS MAP COMPLIES WITH NATIONAL MAP ACCURACY STANDARDS
FOR SALE BY U. S. GEOLOGICAL SURVEY, DENVER, COLORADO 80225, OR RESTON, VIRGINIA 22092
A FOLDER DESCRIBING TOPOGRAPHIC MAPS AND SYMBOLS IS AVAILABLE ON REQUEST



QUADRANGLE LOCATION

ROAD CLASSIFICATION	
Heavy-duty	Light-duty
Medium-duty	Unimproved dirt
	State Route



MILLICAN, TEX.

30096-D2-TF-024

1959
PHOTOREVISED 1980
DMA 6744 I NW-SERIES Y882

3096-143