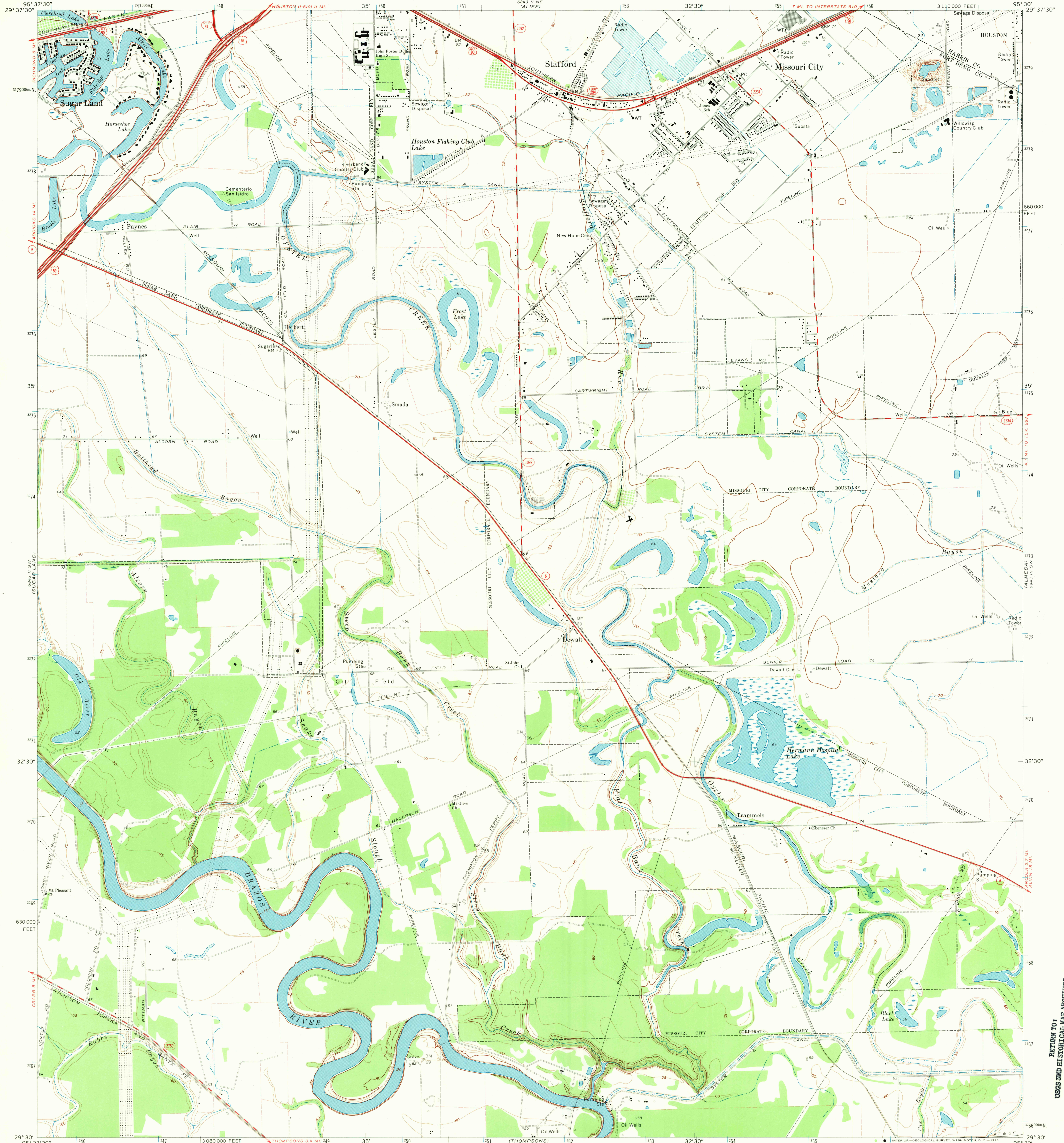
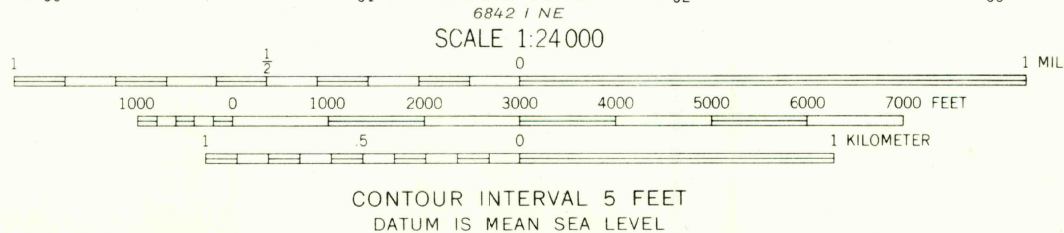
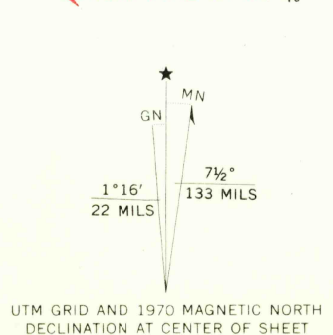


UNITED STATES
DEPARTMENT OF THE INTERIOR
GEOLOGICAL SURVEY

MISSOURI CITY QUADRANGLE
TEXAS
7.5 MINUTE SERIES (TOPOGRAPHIC)
SE 1/4 SUGAR LAND 15' QUADRANGLE



Mapped, edited, and published by the Geological Survey
Control by USGS and USCGS
Planimetry by photogrammetric methods from aerial photographs taken 1968. Topography enlarged from 1:62 500 scale map of Sugar Land quadrangle dated 1955. Topography by planetable surveys. Field checked 1970
Polyconic projection. 1927 North American datum 10,000-foot grid based on Texas coordinate system, south central zone
1000-meter Universal Transverse Mercator grid ticks, zone 15, shown in blue
Fine red dashed lines indicate selected fence lines



ROAD CLASSIFICATION

Primary highway, hard surface	Light-duty road, hard or improved surface
Secondary highway, hard surface	Unimproved road
Interstate Route	U. S. Route
	State Route



USGS HISTORICAL FILE TOPOGRAPHIC DIVISION

MISSOURI CITY, TEX.
SE 1/4 SUGAR LAND 15' QUADRANGLE
N2930-W9530/7.5

1970
AMS 6843 II SE-SERIES V82

THIS MAP COMPLIES WITH NATIONAL MAP ACCURACY STANDARDS
FOR SALE BY U. S. GEOLOGICAL SURVEY, DENVER, COLORADO 80225, OR WASHINGTON, D. C. 20242
A FOLDER DESCRIBING TOPOGRAPHIC MAPS AND SYMBOLS IS AVAILABLE ON REQUEST

RETURN TO:
USGS AND HISTORICAL MAP ARCHIVES

DEC 1 3 1972
2225