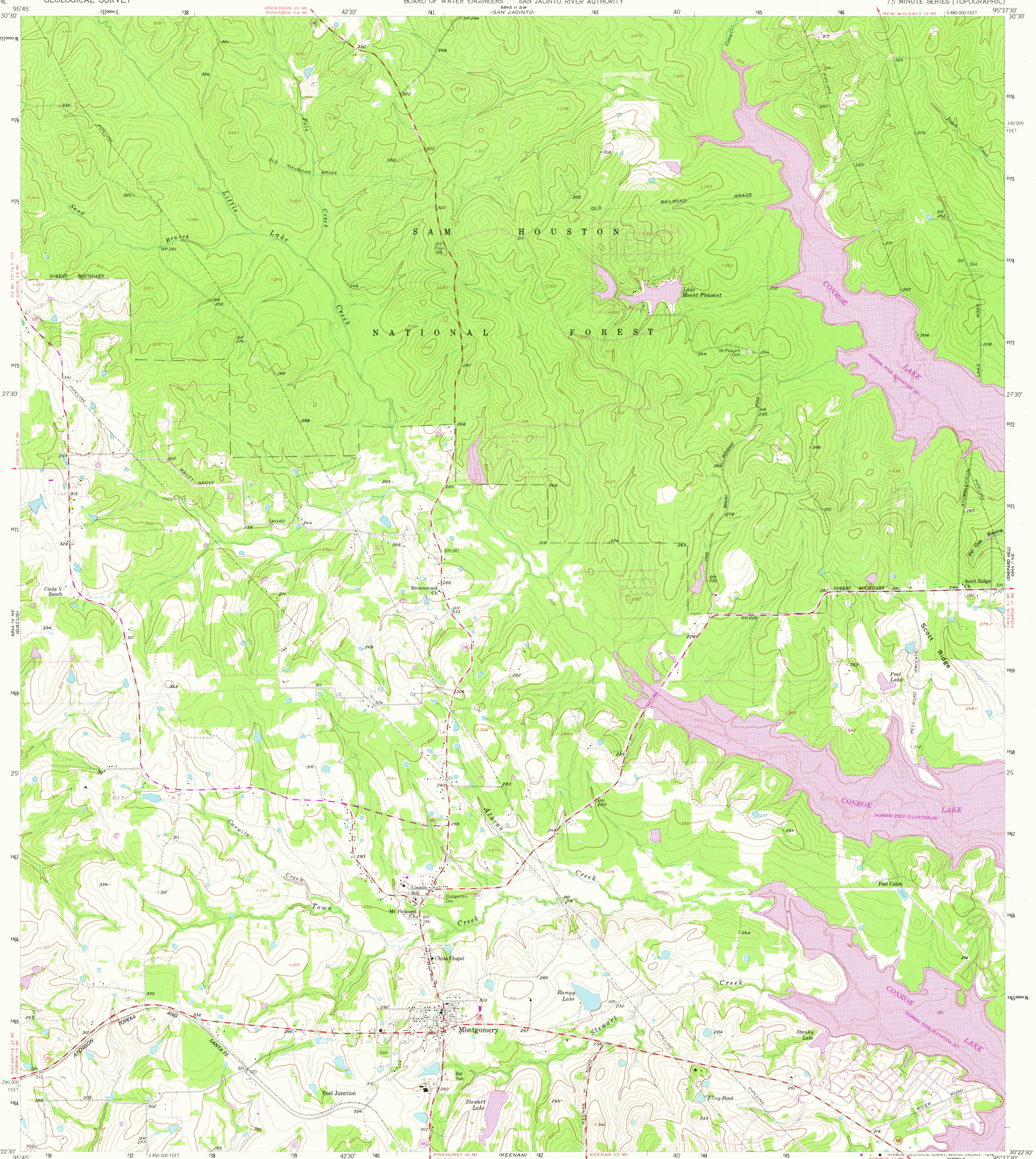
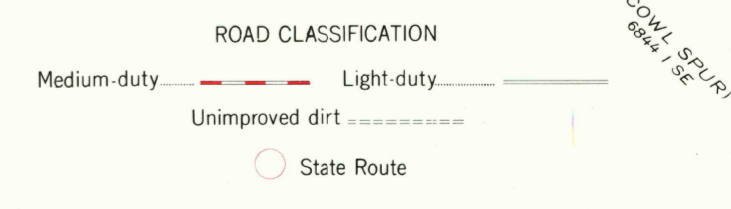
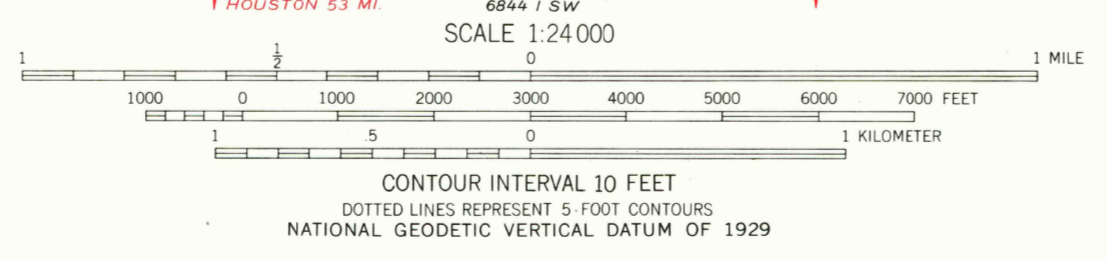
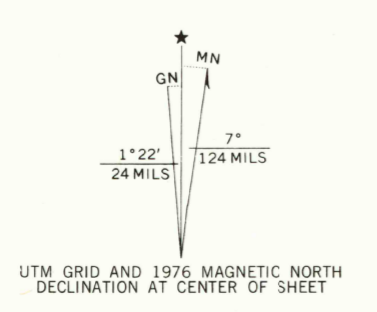


95°45' 30"30"

95°37'30" 30'30"



Maped, edited, and published by the Geological Survey Control by USGS and USC&GS Topography from aerial photographs by photogrammetric methods Aerial photographs taken 1957. Field check 1959 Polycyclic projection. 1927 North American datum 10,000-foot grid based on Texas coordinate system, central zone 1000-meter Universal Transverse Mercator grid ticks, zone 15, shown in blue Unchecked elevations are shown in brown Revisions shown in purple compiled from aerial photographs taken 1976. This information not field checked



THIS MAP COMPLIES WITH NATIONAL MAP ACCURACY STANDARDS FOR SALE BY U. S. GEOLOGICAL SURVEY, DENVER, COLORADO 80225, OR RESTON, VIRGINIA 22092 A FOLDER DESCRIBING TOPOGRAPHIC MAPS AND SYMBOLS IS AVAILABLE ON REQUEST

USGS Historical File Topographic Division

JUL 28 1978 MONTGOMERY, TEX. N3022.5-W9537.5/7.5 1959 PHOTOREVISED 1976 AMS 6844 I NW-SERIES V882

3095-243