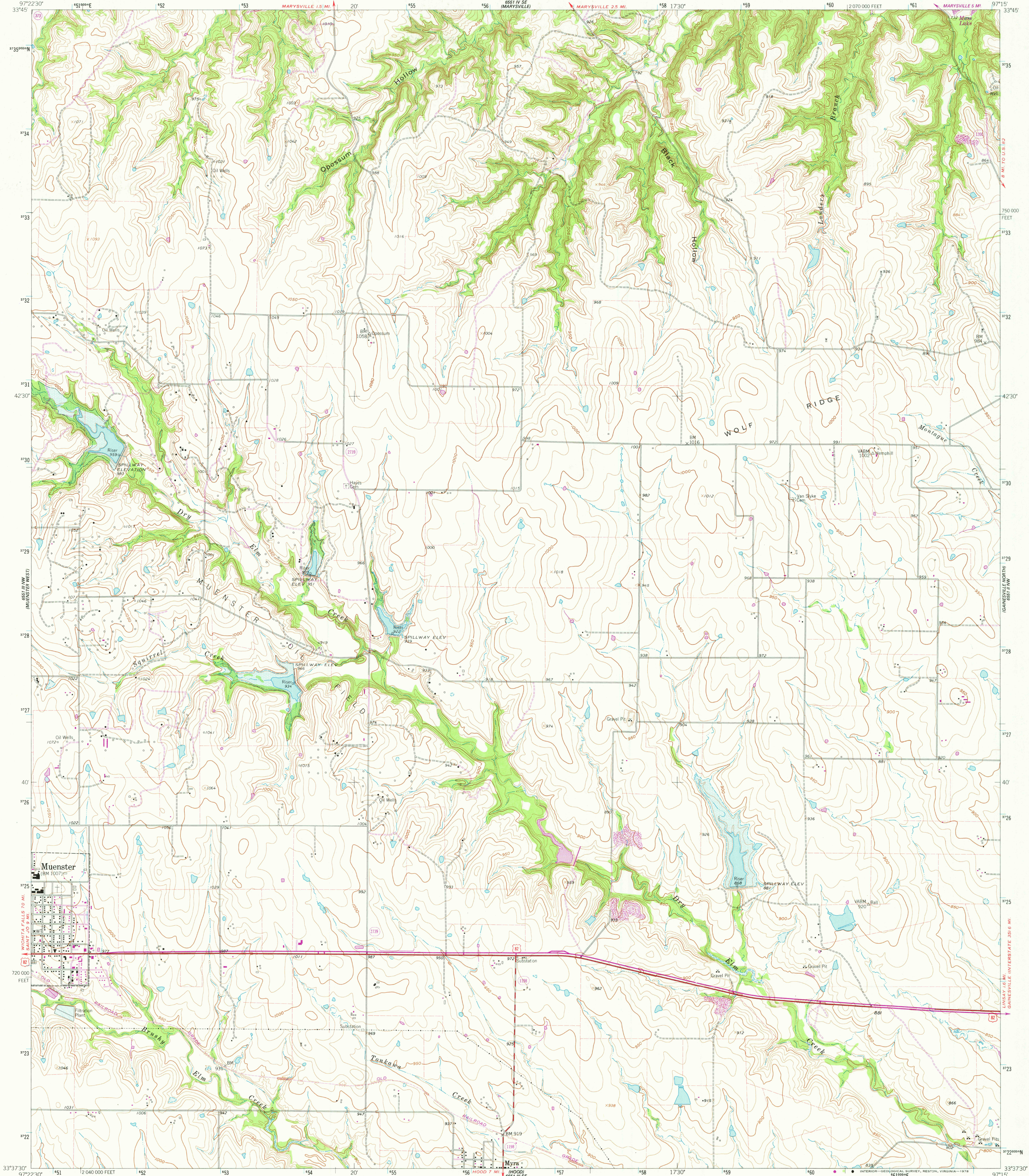


6551 III NE  
1:24,000

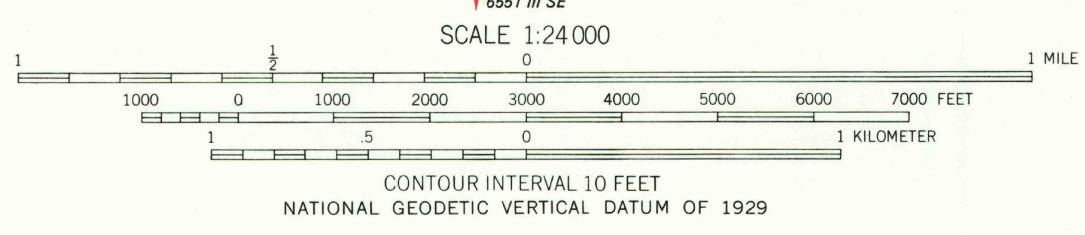
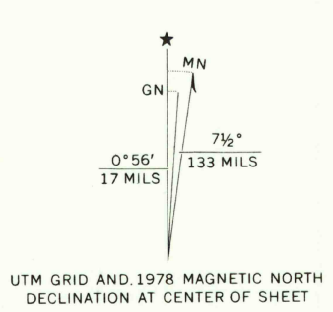
UNITED STATES  
DEPARTMENT OF THE INTERIOR  
GEOLOGICAL SURVEY

MUENSTER EAST QUADRANGLE  
TEXAS-COOKE CO.  
7.5 MINUTE SERIES (TOPOGRAPHIC)

6551 III NE  
(THACKERVILLE)



Mapped, edited, and published by the Geological Survey  
Control by USGS and USC&GS  
Topography by photogrammetric methods from aerial  
photographs taken 1957. Field checked 1961  
Polyconic projection. 1927 North American datum  
10,000-foot grid based on Texas coordinate system, north central zone  
1000-meter Universal Transverse Mercator grid ticks,  
zone 14, shown in blue  
Fine red dashed lines indicate selected fence and field lines where  
generally visible on aerial photographs. This information is unchecked  
Areas covered by dashed light-blue pattern are subject  
to controlled inundation  
Revisions shown in purple compiled from aerial photographs  
taken 1976. This information not field checked.  
Map edited 1978



ROAD CLASSIFICATION

Primary highway, all weather, hard surface	Light-duty road, all weather, improved surface
Secondary highway, all weather, hard surface	Unimproved road, fair or dry weather

○ Interstate Route    □ U. S. Route    ○ State Route SEP 1 1 1978

THIS MAP COMPLIES WITH NATIONAL MAP ACCURACY STANDARDS  
FOR SALE BY U. S. GEOLOGICAL SURVEY, DENVER, COLORADO 80225, OR RESTON, VIRGINIA 22092  
A FOLDER DESCRIBING TOPOGRAPHIC MAPS AND SYMBOLS IS AVAILABLE ON REQUEST

3397-424

USGS  
Historical File  
Topographic Division  
1961  
PHOTOREVISED 1978  
AMS 6551 III NE—SERIES V882

MUENSTER EAST, TEX.  
N3337.5-W9715.77.5

9900