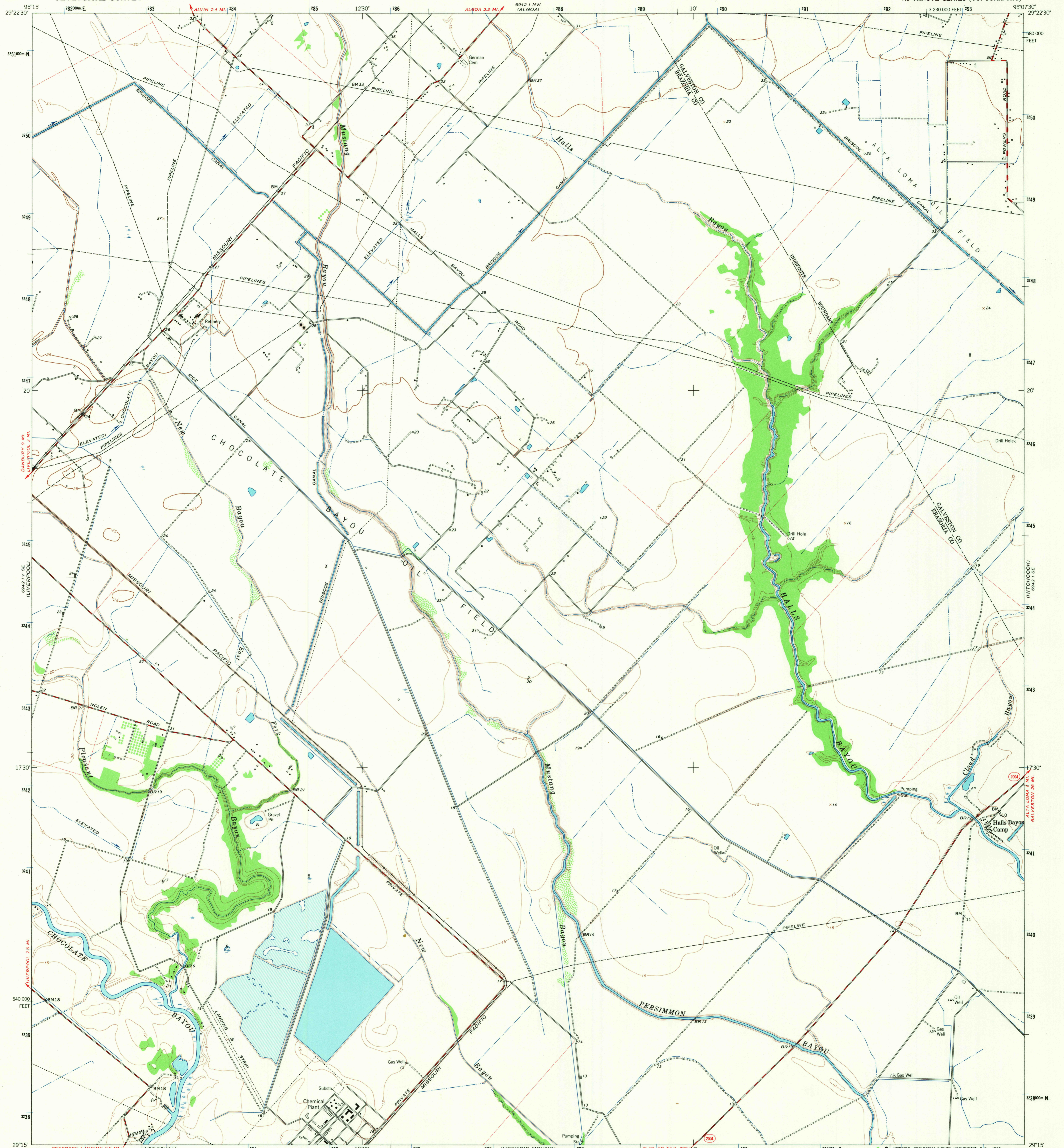


6942 1 NE (MARVEL)  
6942 1 SE (LIVERPOOL)  
6942 1 SW (MAYNARD)  
6942 1 NW (ALGOA)

UNITED STATES  
DEPARTMENT OF THE INTERIOR  
GEOLOGICAL SURVEY

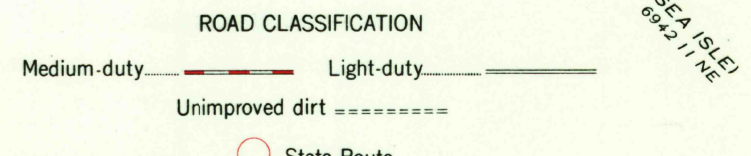
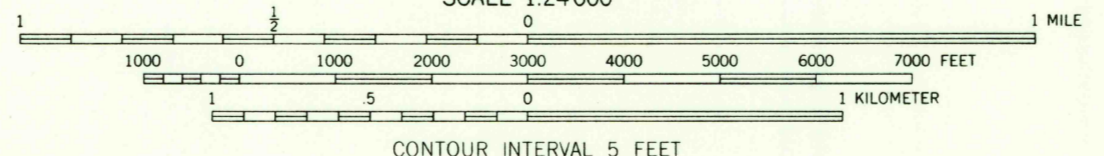
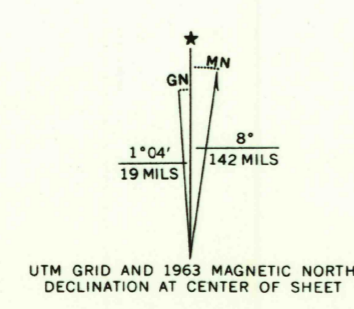
MUSTANG BAYOU QUADRANGLE  
TEXAS  
7.5 MINUTE SERIES (TOPOGRAPHIC)



Maped, edited, and published by the Geological Survey  
Control by USGS, USC&GS, USCE, and Tennessee Valley Authority

Planimetry by photogrammetric methods from aerial photographs  
taken 1961. Topography from 1:24,000 scale AMS map of  
Mustang Bayou quadrangle. Original map by photogrammetric  
methods and planimetric surveys 1943. Revised 1963

Polyconic projection. 1927 North American datum  
10,000-foot grid based on Texas coordinate system, south central zone  
1000-meter Universal Transverse Mercator grid ticks,  
zone 15, shown in blue  
Fine red dashed lines indicate selected fence lines



U.S.G.S.  
FILE COPY  
TOPOGRAPHIC DIVISION

MUSTANG BAYOU, TEX.  
N2915-W9507.5/7.5  
1963

THIS MAP COMPLIES WITH NATIONAL MAP ACCURACY STANDARDS  
FOR SALE BY U.S. GEOLOGICAL SURVEY, DENVER, COLORADO 80225, OR WASHINGTON, D.C. 20242  
A FOLDER DESCRIBING TOPOGRAPHIC MAPS AND SYMBOLS IS AVAILABLE ON REQUEST

AMS 6942 1 SW - SERIES V882

2635  
SEP 19 1966