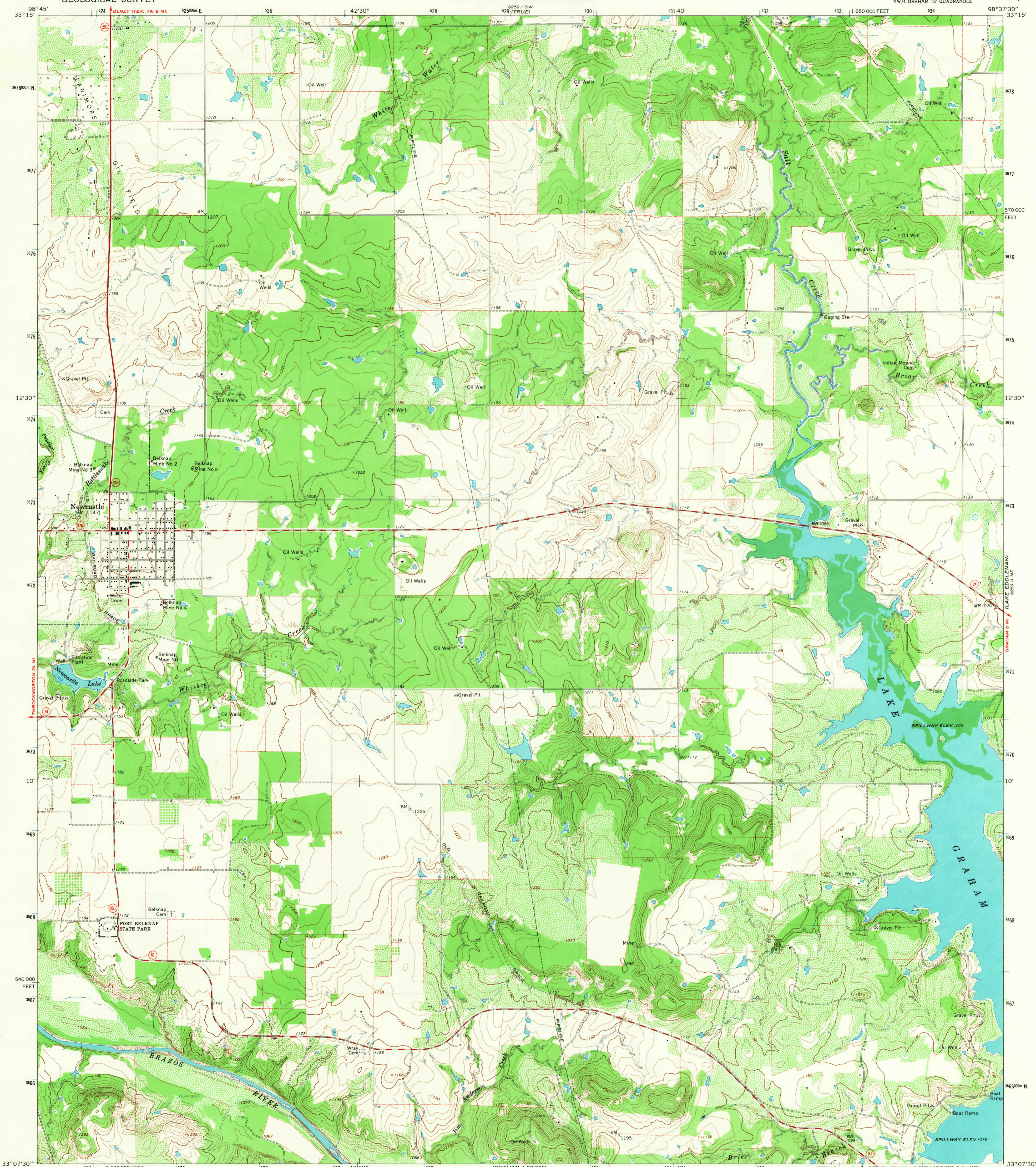
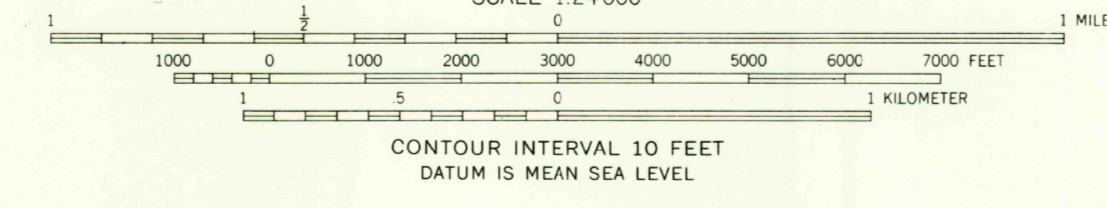
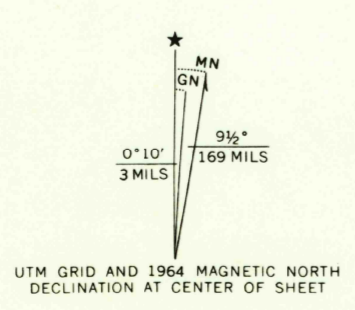


6250 I SW
6250 I SW
6250 I SW

6250 I NE
6250 I NE
6250 I NE



Mapped, edited, and published by the Geological Survey
Control by USGS and USC&GS
Topography by photogrammetric methods from aerial photographs
taken 1962 and 1963. Field checked 1964
Polyconic projection. 1927 North American datum
10,000-foot grid based on Texas coordinate system,
north central zone
1,000-meter Universal Transverse Mercator grid ticks,
zone 14, shown in blue
Fine red dashed lines indicate selected fence lines



ROAD CLASSIFICATION

Heavy-duty	Light-duty
Medium-duty	Unimproved dirt
○ State Route	



U.S.G.S.
FILE COPY
TOPOGRAPHIC DIVISION

NEWCASTLE, TEX.
NW/4 GRAHAM 15' QUADRANGLE
N3307.5-W9837.5/7.5
1964
AMS 6250 I NW—SERIES V882

2925
APR 7 1967

RETURN TO:
USGS AND HISTORICAL MAP ARCHIVES

THIS MAP COMPLIES WITH NATIONAL MAP ACCURACY STANDARDS
FOR SALE BY U.S. GEOLOGICAL SURVEY, DENVER, COLORADO 80225, OR WASHINGTON, D.C. 20242
A FOLDER DESCRIBING TOPOGRAPHIC MAPS AND SYMBOLS IS AVAILABLE ON REQUEST