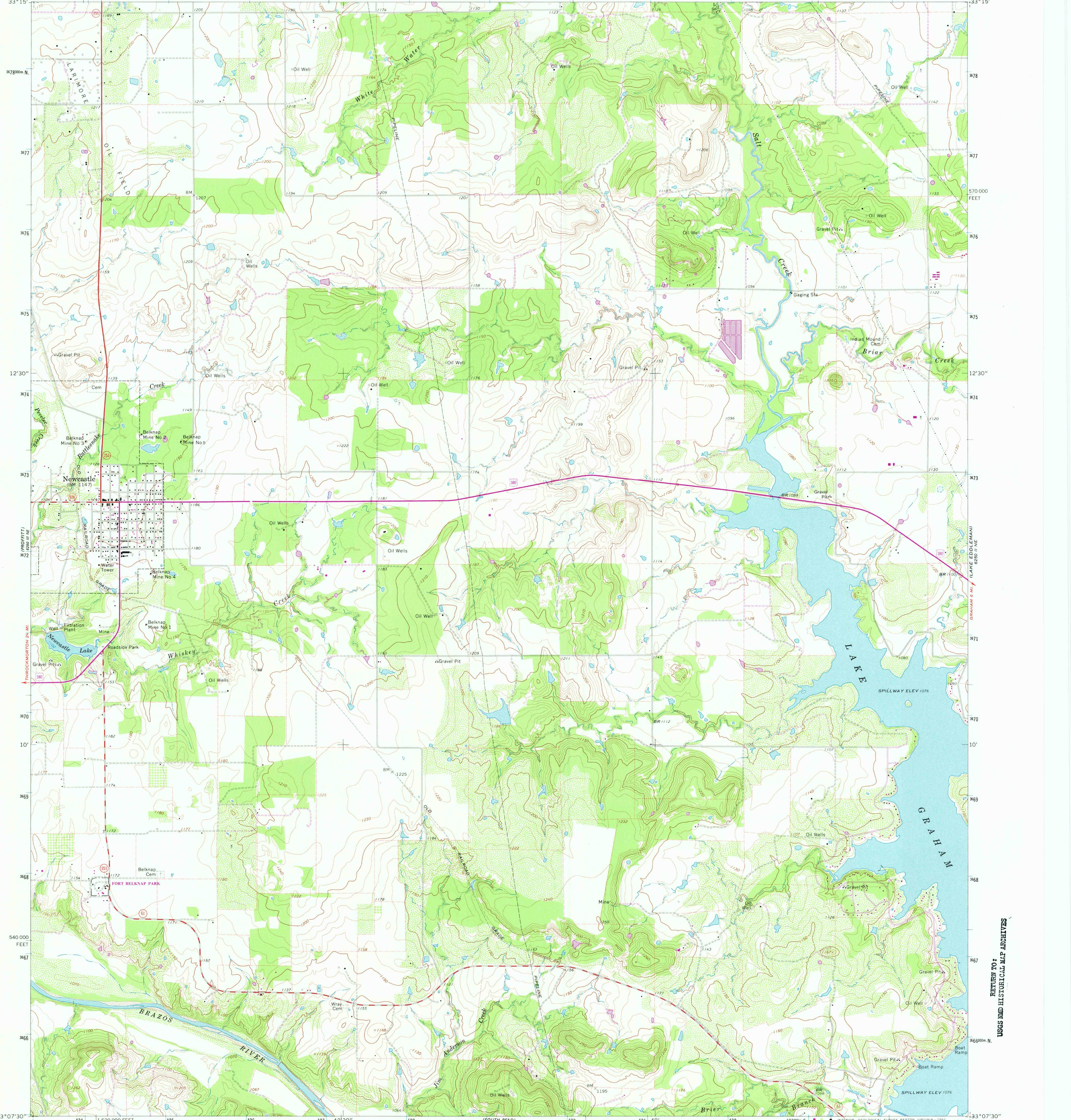


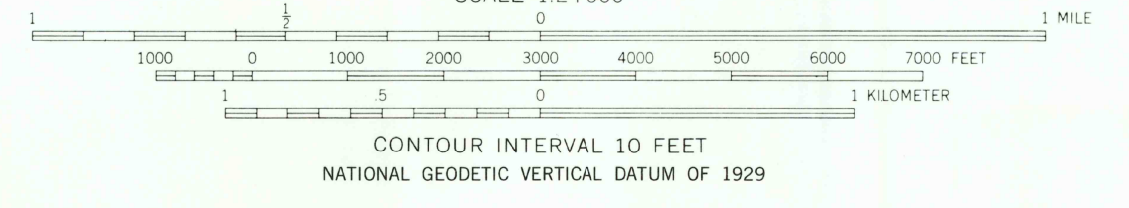
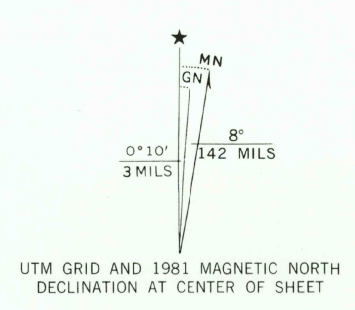
98° 45' 33" W
33° 15' N

98° 37' 30" W
33° 15' N



Mapped, edited, and published by the Geological Survey
 Control by USGS and NOS/NOAA

Topography by photogrammetric methods from aerial photographs taken 1962 and 1963. Field checked 1964
 Polyconic projection. 10,000-foot grid ticks based on Texas coordinate system, north central zone. 1000-meter Universal Transverse Mercator grid ticks, zone 14, shown in blue 1927 North American Datum. To place on the predicted North American Datum 1983 move the projection lines 8 meters south and 32 meters east as shown by dashed corner ticks
 Fine red dashed lines indicate selected fence and field lines where generally visible on aerial photographs. This information is unchecked
 Revisions shown in purple and woodland compiled from aerial photographs taken 1979 and other sources. This information not field checked. Map edited 1981



ROAD CLASSIFICATION

Heavy-duty	Light-duty
Medium-duty	Unimproved dirt
State Route	U. S. Route

NEWCASTLE, TEX.
 N3307.5—W9837.5/7.5
 1964
 PHOTOREVISED 1981
 DMA 6250 II NW—SERIES V882

THIS MAP COMPLIES WITH NATIONAL MAP ACCURACY STANDARDS
 FOR SALE BY U. S. GEOLOGICAL SURVEY, DENVER, COLORADO 80225 OR RESTON, VIRGINIA 22092
 A FOLDER DESCRIBING TOPOGRAPHIC MAPS AND SYMBOLS IS AVAILABLE ON REQUEST

3398-213

RETURN TO:
 USGS AND HISTORICAL MAP ARCHIVES

Handwritten initials: *nee*