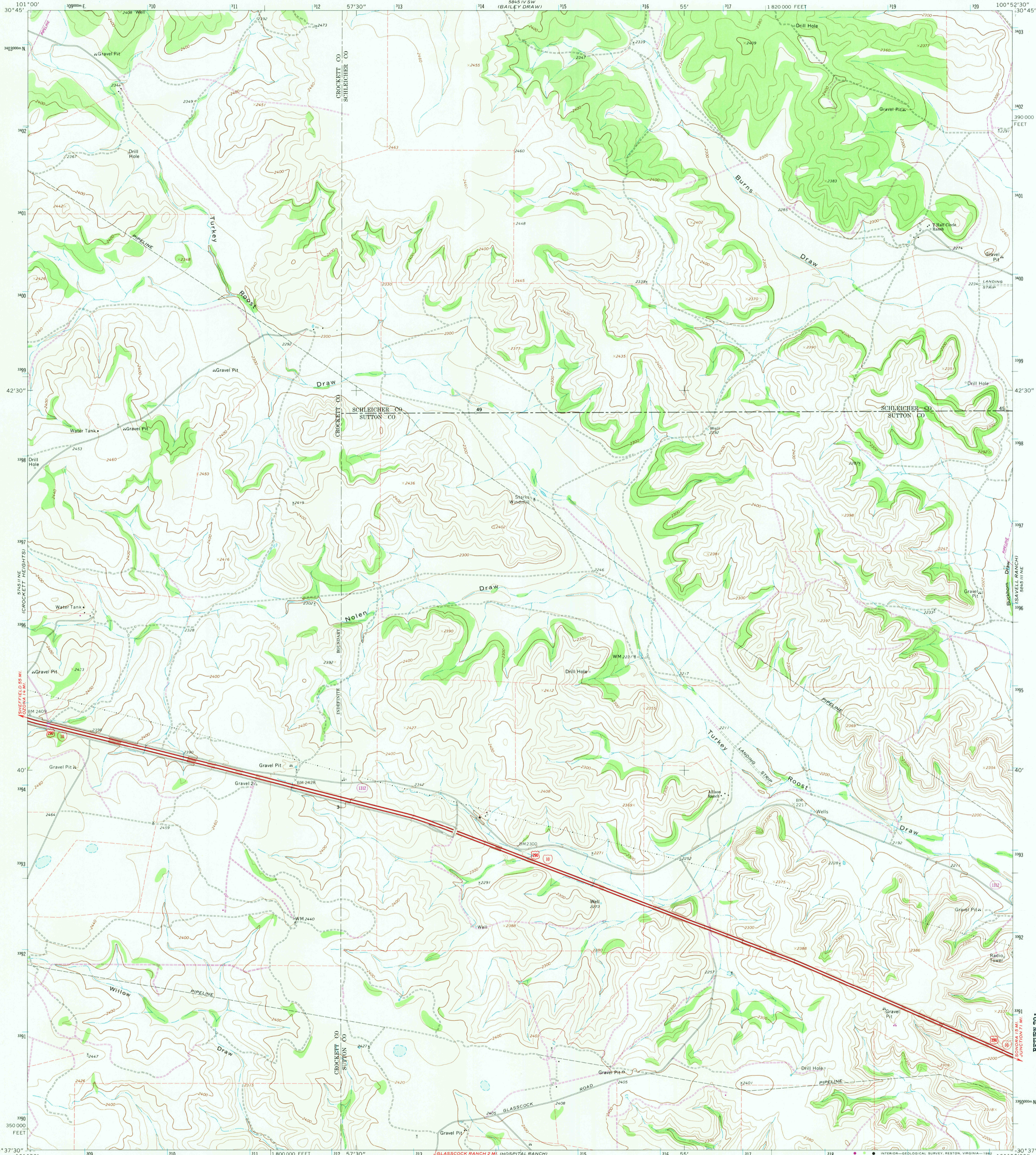


57°30' W  
101°00' E  
30°45' N

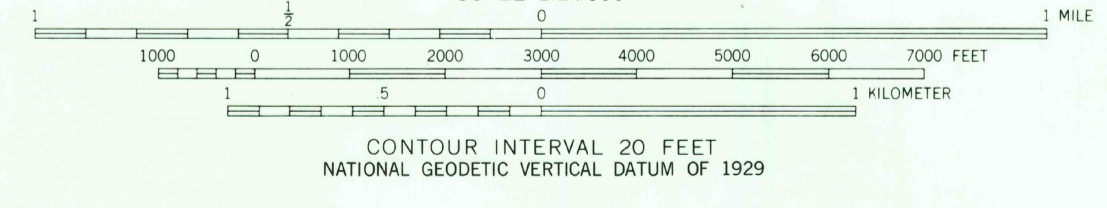
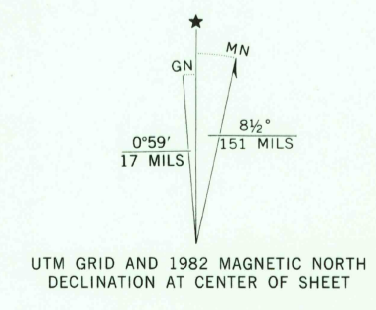
UNITED STATES  
DEPARTMENT OF THE INTERIOR  
GEOLOGICAL SURVEY

NOLEN DRAW QUADRANGLE  
TEXAS  
7.5 MINUTE SERIES (TOPOGRAPHIC)

100°52'30" W  
30°45' N



Mapped, edited, and published by the Geological Survey  
Control by USGS and NOS/NOAA  
Topography by photogrammetric methods from aerial  
photographs taken 1966. Field checked 1967  
Polyconic projection. 10,000-foot grid ticks based on Texas  
coordinate system, central zone. 1000-meter Universal Transverse  
Mercator grid ticks, zone 14, shown in blue. 1927 North American  
Datum. To place on the predicted North American Datum 1983  
move the projection lines 15 meters south and 36 meters east as  
shown by dashed corner ticks  
Fine red dashed lines indicate selected fence lines  
Revisions shown in purple and woodland compiled from aerial  
photographs taken 1979 and other sources. This information  
not field checked. Map edited 1981



SCALE 1:24,000  
CONTOUR INTERVAL 20 FEET  
NATIONAL GEODETIC VERTICAL DATUM OF 1929



QUADRANGLE LOCATION

ROAD CLASSIFICATION

Primary highway, hard surface	Light-duty road, hard or improved surface
Secondary highway, hard surface	Unimproved road
Interstate Route	U. S. Route
	State Route

THIS MAP COMPLIES WITH NATIONAL MAP ACCURACY STANDARDS  
FOR SALE BY U. S. GEOLOGICAL SURVEY, DENVER, COLORADO 80225, OR RESTON, VIRGINIA 22092  
A FOLDER DESCRIBING TOPOGRAPHIC MAPS AND SYMBOLS IS AVAILABLE ON REQUEST

3000-323

NOLEN DRAW, TEX.  
N3037.5-W10052.5/7.5  
1967  
PHOTOREVISED 1982  
DMA 5845 III NW-SERIES V882

REVIEW TO:  
USGS MED HISTORICAL MAP ARCHIVES

MAP 2-136  
1982

2650