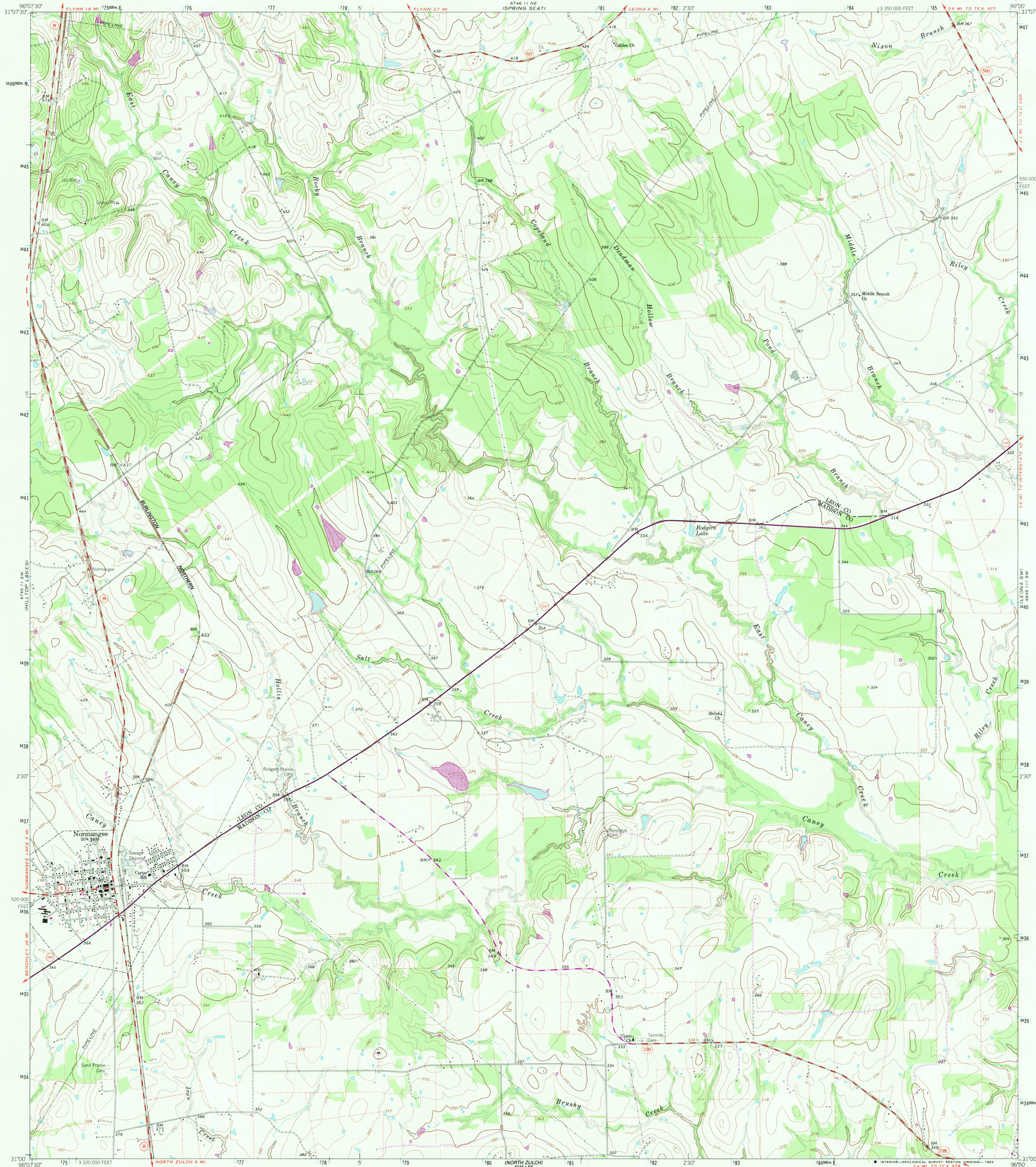


696 1111 NW  
116000

UNITED STATES  
DEPARTMENT OF THE INTERIOR  
GEOLOGICAL SURVEY

NORMANGEE QUADRANGLE  
TEXAS  
7.5 MINUTE SERIES (TOPOGRAPHIC)

696 1111 NW  
116000



Mapped, edited, and published by the Geological Survey  
Control by USGS and NOS/NOAA

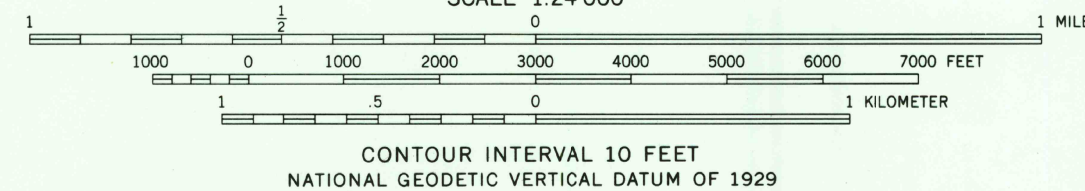
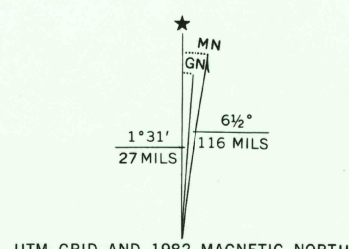
Topography by photogrammetric methods from aerial  
photographs taken 1963. Field checked 1964

Polynomial projection. 1927 North American Datum  
10,000-foot grid based on Texas coordinate system; central zone  
1000-meter Universal Transverse Mercator grid ticks,  
zone 14, shown in blue

Fine red dashed lines indicate selected fence lines

To place on the predicted North American Datum 1983  
move the projection lines 1.6 meters south and  
24 meters east as shown by dashed corner ticks

Revisions shown in purple and woodland compiled from  
aerial photographs taken 1978 and other source data  
This information not field checked. Map edited 1982



THIS MAP COMPLIES WITH NATIONAL MAP ACCURACY STANDARDS  
FOR SALE BY U. S. GEOLOGICAL SURVEY, DENVER, COLORADO 80225, OR RESTON, VIRGINIA 22092  
A FOLDER DESCRIBING TOPOGRAPHIC MAPS AND SYMBOLS IS AVAILABLE ON REQUEST



QUADRANGLE LOCATION

ROAD CLASSIFICATION  
Primary highway, hard surface  
Secondary highway, hard surface  
Light-duty road, hard or improved surface  
Unimproved road  
State Route

NORMANGEE, TEX.  
N3100-W9600/7.5

1964  
PHOTOREVISED 1982  
DMA 6746 11 SE-SERIES V882

3196-111

RETURN TO:  
U.S. GEOLOGICAL SURVEY  
WASHINGTON, D.C. 20506

JAN 10 1984