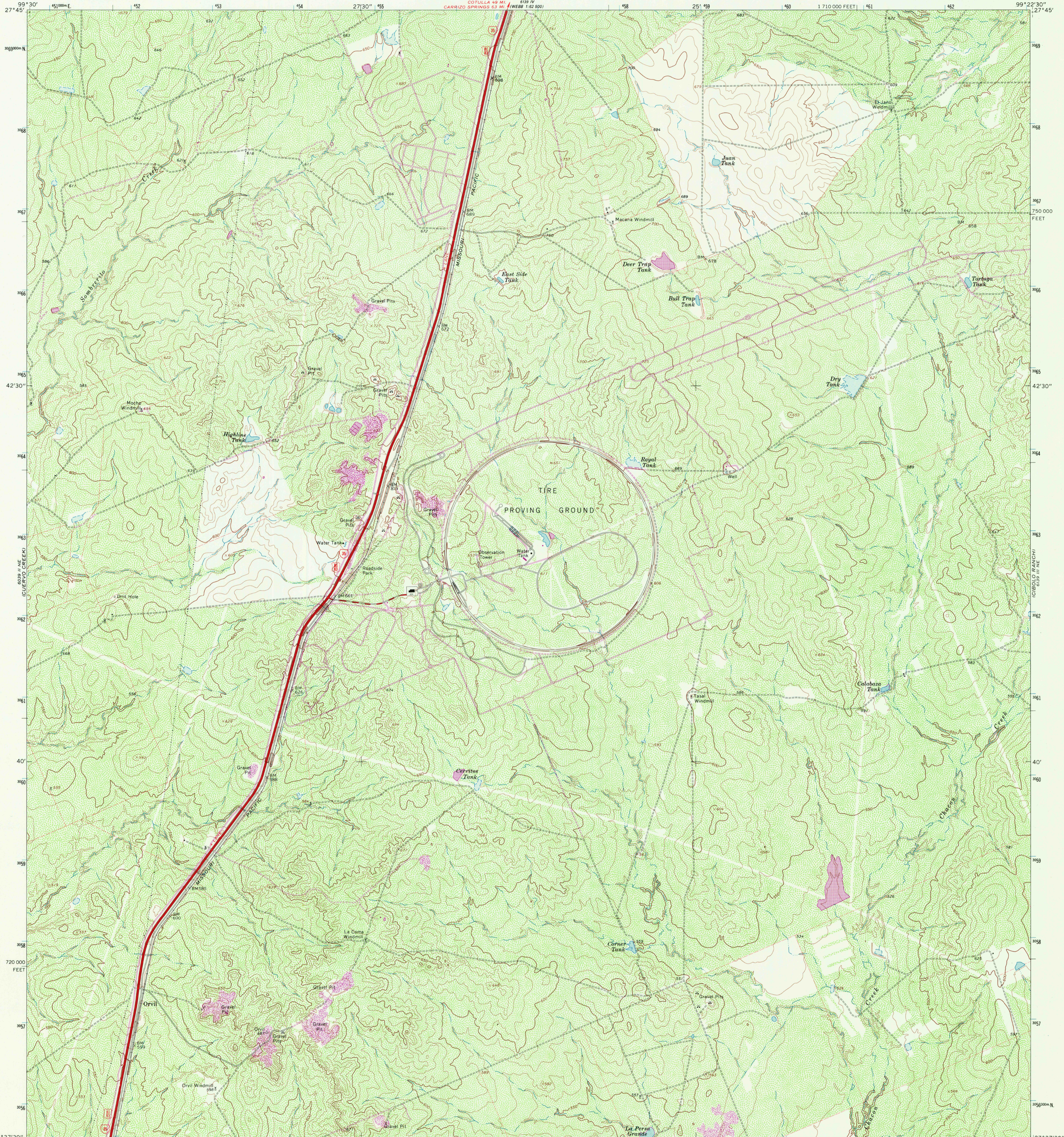


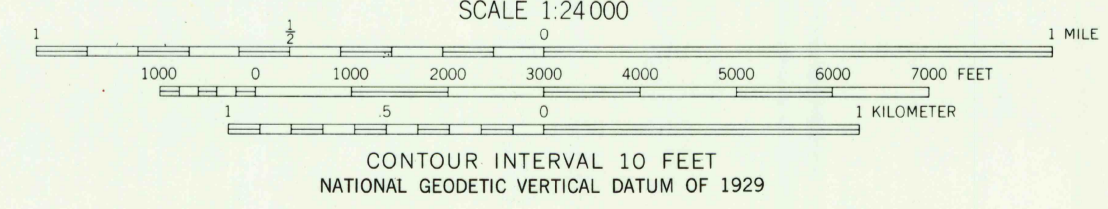
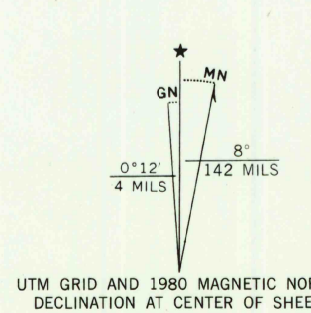
6039 11 NE  
INFO BRANCH

UNITED STATES  
DEPARTMENT OF THE INTERIOR  
GEOLOGICAL SURVEY

ORVIL QUADRANGLE  
TEXAS—WEBB CO.  
7.5 MINUTE SERIES (TOPOGRAPHIC)



Mapped, edited, and published by the Geological Survey  
Control by USGS and NOS/NOAA  
Topography by photogrammetric methods from aerial photographs taken 1964. Field checked 1965  
Polyconic projection. 10,000-foot grid based on Texas coordinate system, south zone  
1000-meter Universal Transverse Mercator grid ticks, zone 14, shown in blue. 1927 North American Datum  
To place on the predicted North American Datum 1983 move the projection lines 27 meters south and 32 meters east as shown by dashed corner ticks  
Fine red dashed lines indicate selected fence lines  
Revisions shown in purple compiled from aerial photographs taken 1975 and other source data  
This information not field checked. Map edited 1980



ROAD CLASSIFICATION

Heavy-duty	Light-duty
Medium-duty	Unimproved dirt
Interstate Route	U.S. Route



THIS MAP COMPLIES WITH NATIONAL MAP ACCURACY STANDARDS  
FOR SALE BY U.S. GEOLOGICAL SURVEY, DENVER, COLORADO 80225 OR RESTON, VIRGINIA 22092  
A FOLDER DESCRIBING TOPOGRAPHIC MAPS AND SYMBOLS IS AVAILABLE ON REQUEST

2799-423

USGS  
Historical File  
Topographic Division

ORVIL, TEX.  
N2737.5—W9922.5/7.5  
1965  
PHOTOREVISED 1980  
DMA 6139 III NW—SERIES V882

DEC 11 1980  
2150