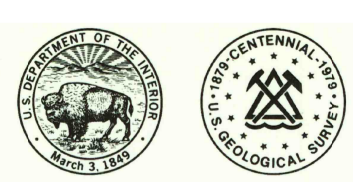


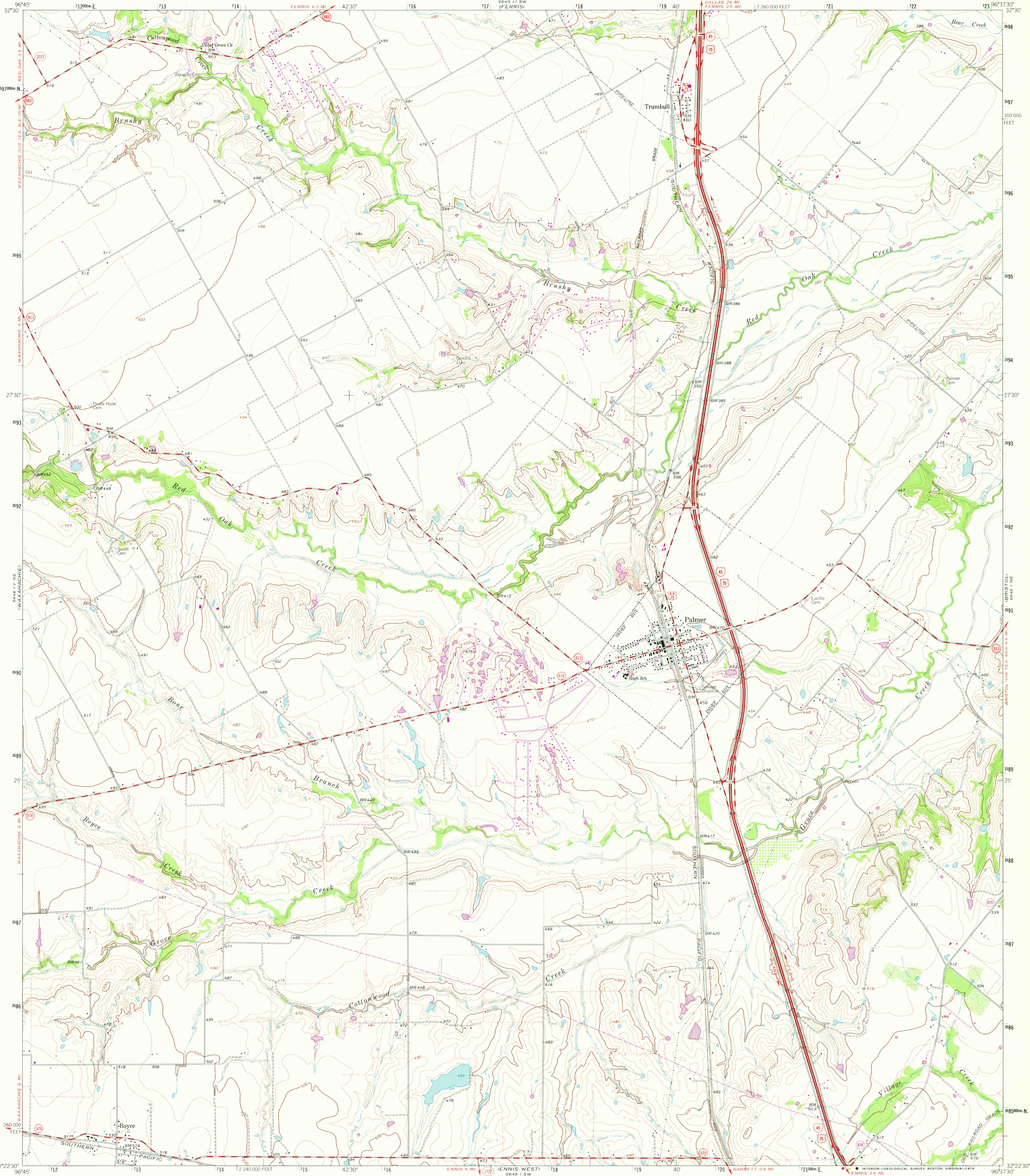
6649 11 SE (LANCASTER)

6649 1 SE (INDIAN)

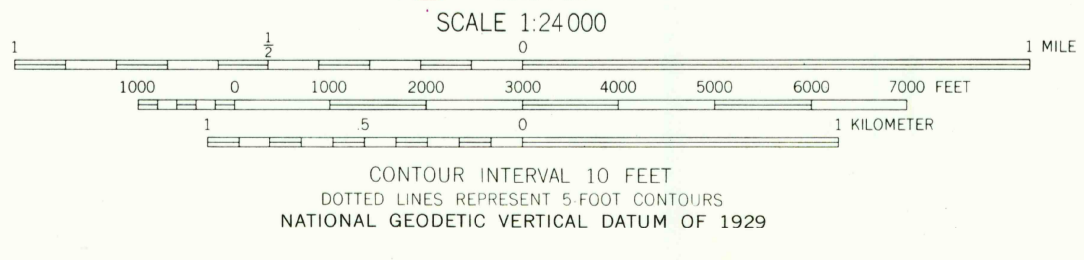
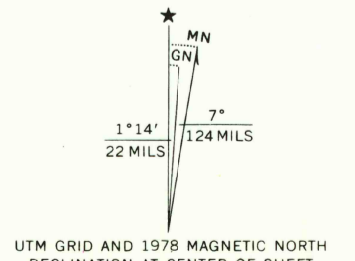
UNITED STATES DEPARTMENT OF THE INTERIOR GEOLOGICAL SURVEY



PALMER QUADRANGLE TEXAS-ELLIS CO. 7.5 MINUTE SERIES (TOPOGRAPHIC)



Mapped, edited, and published by the Geological Survey Control by USGS and USC&GS Topography by photogrammetric methods from aerial photographs taken 1961 Field checked 1963 Polyconic projection 1927 North American datum 10,000-foot grid based on Texas coordinate system, north central zone 1000-meter Universal Transverse Mercator grid ticks, zone 14, shown in blue Fine red dashed lines indicate selected fence lines Revisions shown in purple and woodland compiled from aerial photographs taken 1976 and other source data. This information not field checked. Map edited 1978



ROAD CLASSIFICATION table with categories: Heavy-duty, Medium-duty, Light-duty, Unimproved dirt, Interstate Route, U.S. Route, State Route.

THIS MAP COMPLIES WITH NATIONAL MAP ACCURACY STANDARDS FOR SALE BY U.S. GEOLOGICAL SURVEY, DENVER, COLORADO 80225, OR RESTON, VIRGINIA 22092 A FOLDER DESCRIBING TOPOGRAPHIC MAPS AND SYMBOLS IS AVAILABLE ON REQUEST

3296-243

USGS Historical File Topographic Division

APR 26 1979 PALMER, TEX. N3222.5-W9637.5/7.5 1963 PHOTOREVISED 1978 AMS 6648 1 NW-SERIES V882

2300