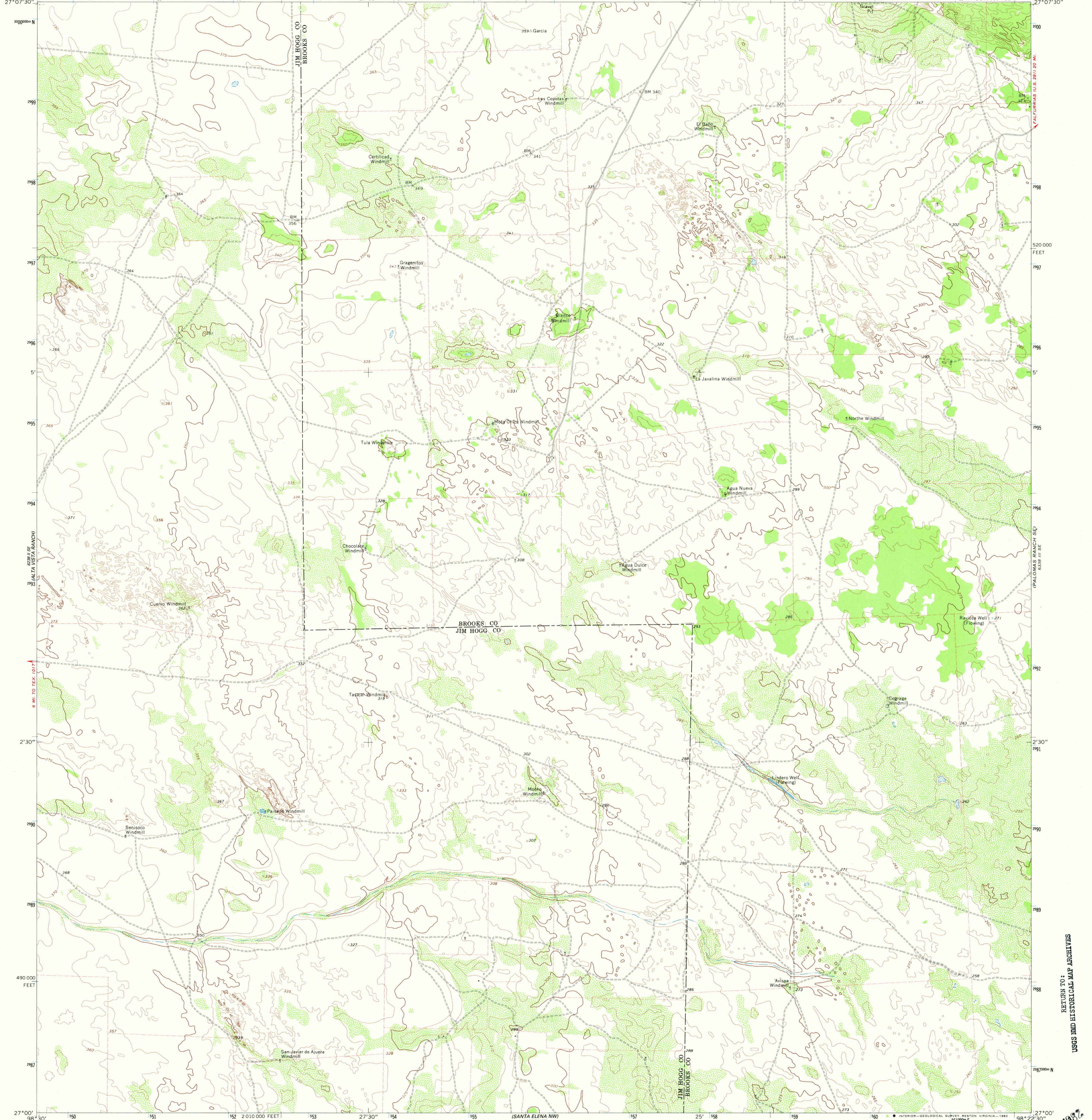


6338 III NW
PALOMAS RANCH
6338 III SE
PALOMAS RANCH

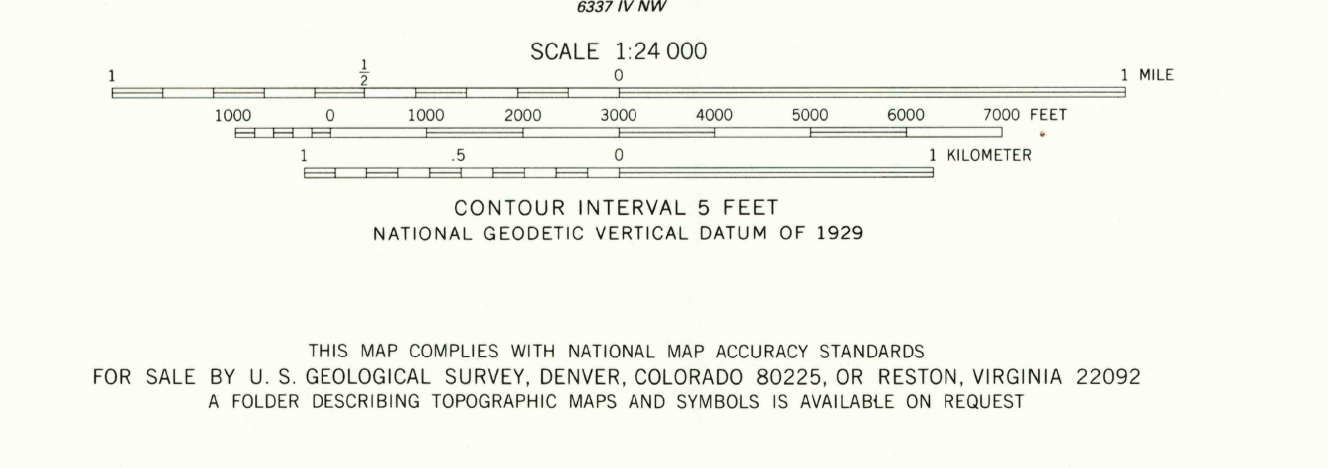
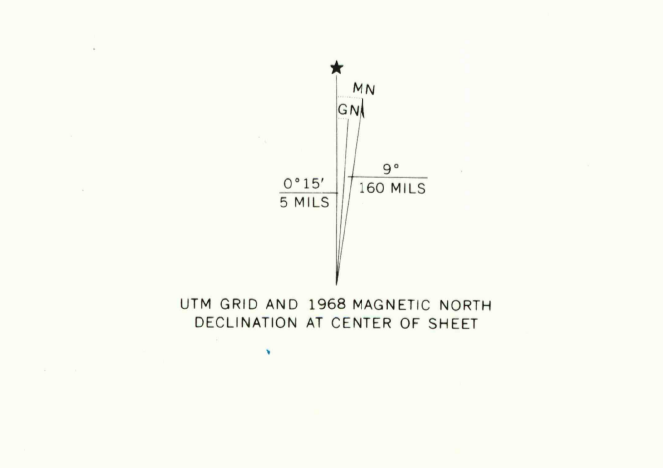
UNITED STATES
DEPARTMENT OF THE INTERIOR
GEOLOGICAL SURVEY

PALOMAS RANCH SW QUADRANGLE
TEXAS
7.5 MINUTE SERIES (TOPOGRAPHIC)

6338 III SE
PALOMAS RANCH



Mapped, edited, and published by the Geological Survey
Control by USGS and USC&GS
Topography by photogrammetric methods from aerial
photographs taken 1967. Field checked 1968
Polyconic projection. 1927 North American datum
10,000-foot grid based on Texas coordinate system,
south zone
1000-meter Universal Transverse Mercator grid ticks,
zone 14, shown in blue
Fine red dashed lines indicate selected fence lines
To place on the predicted North American Datum 1983
move the projection lines 30 meters south and
29 meters east as shown by dashed corner ticks



ROAD CLASSIFICATION
Light-duty road, all weather, Unimproved road, fair or dry weather
improved surface weather

TEXAS
QUADRANGLE LOCATION

PALOMAS RANCH SW, TEX.
N2700-W9822.5/7.5

1968
DMA 6338 III SW—SERIES V882

RETURN TO:
USGS AND HISTORICAL MAP ARCHIVES

1980