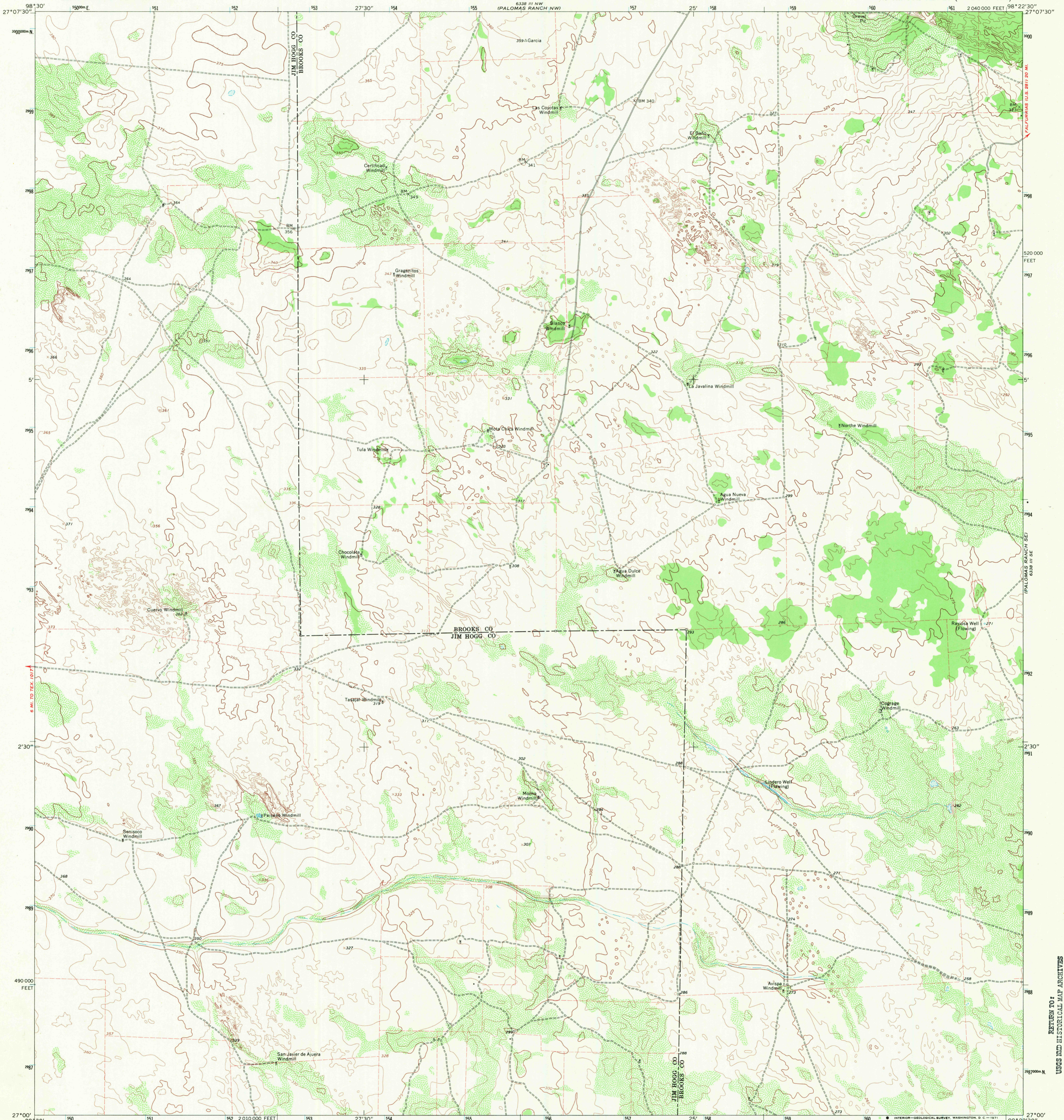
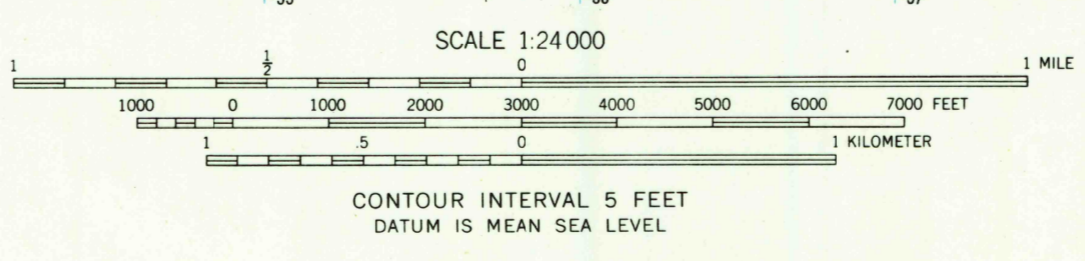
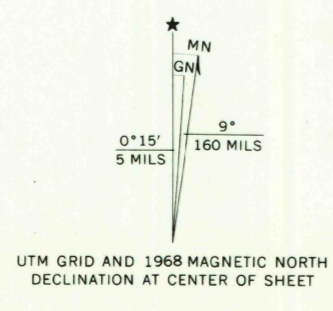


6338 III NW
(PALOMAS RANCH)



Mapped, edited, and published by the Geological Survey
Control by USGS and USC&GS
Topography by photogrammetric methods from aerial
photographs taken 1967. Field checked 1968
Polyconic projection. 1927 North American datum
10,000-foot grid based on Texas coordinate system,
south zone
1000-meter Universal Transverse Mercator grid ticks,
zone 14, shown in blue
Fine red dashed lines indicate selected fence lines



ROAD CLASSIFICATION
Light-duty road, all weather, improved surface
Unimproved road, fair or dry weather



THIS MAP COMPLIES WITH NATIONAL MAP ACCURACY STANDARDS
FOR SALE BY U. S. GEOLOGICAL SURVEY, DENVER, COLORADO 80225, OR WASHINGTON, D. C. 20242
A FOLDER DESCRIBING TOPOGRAPHIC MAPS AND SYMBOLS IS AVAILABLE ON REQUEST

U.S.G.S. FILE COPY TOPOGRAPHIC DIVISION
PALOMAS RANCH SW, TEX. N2700-W9822.5/7.5
1968
AMS 6338 III SW-SERIES V882
2645
MAR 19 1971

RETURN TO:
USGS AND HISTORICAL MAP ARCHIVES