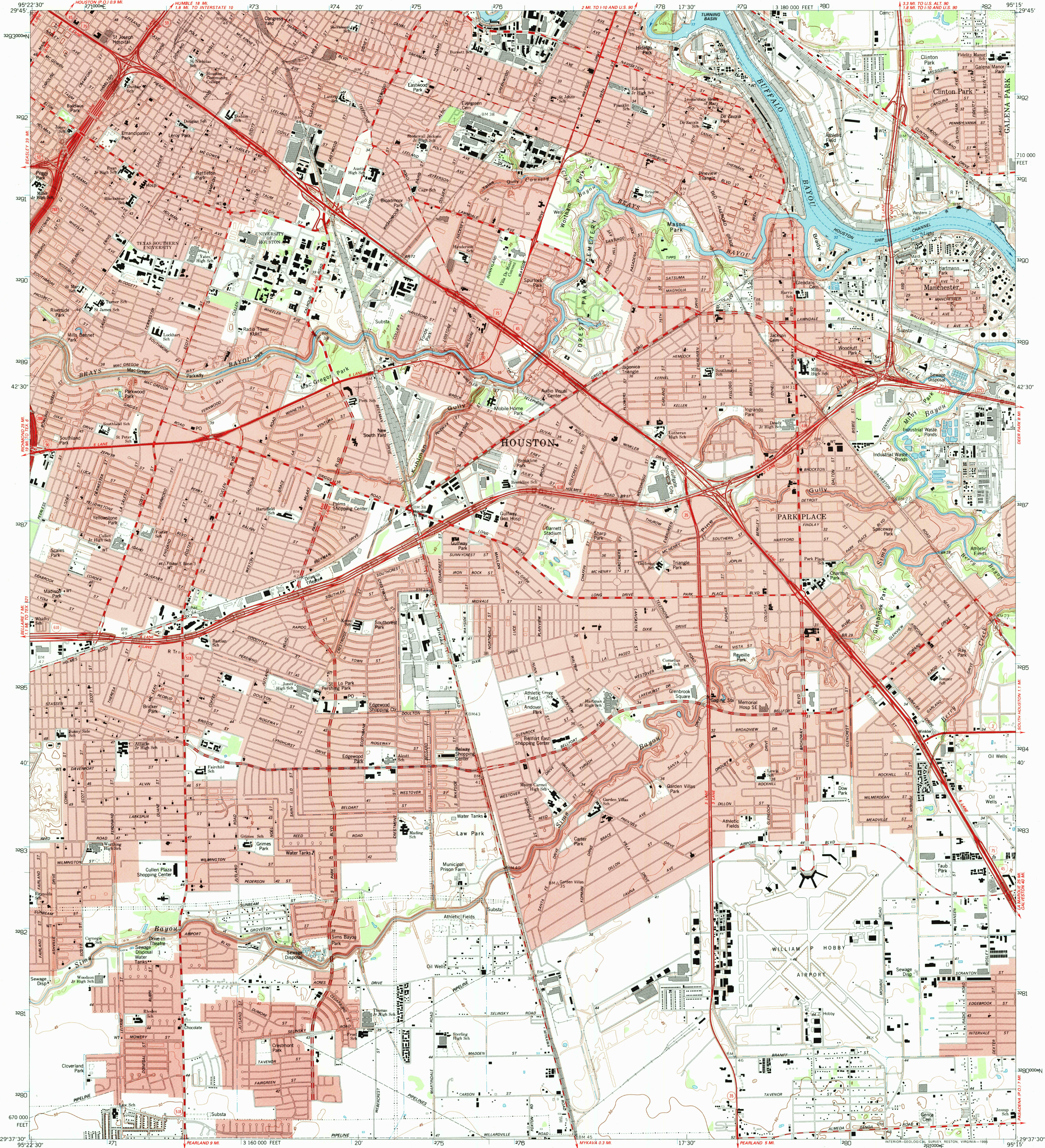
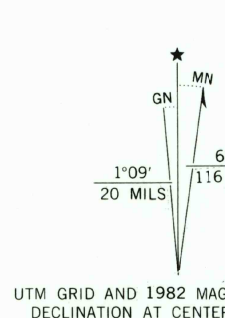


UNITED STATES  
DEPARTMENT OF THE INTERIOR  
GEOLOGICAL SURVEY

PARK PLACE QUADRANGLE  
TEXAS-HARRIS CO.  
7.5 MINUTE SERIES (TOPOGRAPHIC)



Produced by the United States Geological Survey  
Control by USGS and NOS/NOAA  
Compiled from aerial photographs taken 1976. Field checked 1976  
Map edited 1982  
Selected hydrographic data compiled from NOS/NOAA Chart 11329  
(1980). This information not intended for navigational purposes  
North American Datum of 1927 (NAD 27). Projection and  
1000-foot ticks: Texas Coordinate System, south central zone  
(Lambert Conformal Conic)  
Blue 1000-meter Universal Transverse Mercator ticks, zone 15  
North American Datum of 1983 (NAD 83) is shown by dashed  
corner ticks. The values of the ticks between NAD 27 and NAD 83  
for 7.5-minute intersections are obtainable from National Geodetic  
Survey NADCON software  
Red tint indicated areas in which only landmark buildings are shown  
A portion of this map lies within a subsidence area contouring based  
on 1973 adjustment of vertical control

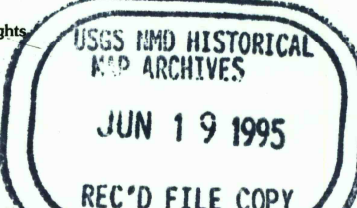


SCALE 1:24 000  
1 000 2 000 3 000 4 000 5 000 6 000 7 000 FEET  
1 KILOMETER  
CONTOUR INTERVAL 5 FEET  
NATIONAL GEODETIC VERTICAL DATUM OF 1929  
SOUNDINGS IN FEET-GULF COAST LOW WATER DATUM  
SHORELINE SHOWN REPRESENTS THE APPROXIMATE LINE OF MEAN HIGH WATER  
THE MEAN RANGE OF TIDE IS NEGLIGIBLE  
THIS MAP COMPLIES WITH NATIONAL MAP ACCURACY STANDARDS  
FOR SALE BY U.S. GEOLOGICAL SURVEY, DENVER, COLORADO 80225, OR RESTON, VIRGINIA 22092  
A FOLDER DESCRIBING TOPOGRAPHIC MAPS AND SYMBOLS IS AVAILABLE ON REQUEST



QUADRANGLE LOCATION  
2995-424

1	2	3	1 Houston Heights
4	5	2 Settegast	2 Jackson City
6	7	3 Bellville	3 Pasadena
		4 Alameda	4 Alameda
		5 Pearland	5 Pearland
		6 Friendswood	6 Friendswood



ROAD CLASSIFICATION  
Primary highway, hard surface  
Secondary highway, hard surface  
Unimproved road  
Light-duty road, hard or improved surface  
Interstate Route  
U.S. Route  
State Route  
PARK PLACE, TX  
29095-F3-1F-024  
1982  
DMA 6943 III NE-SERIES V882

