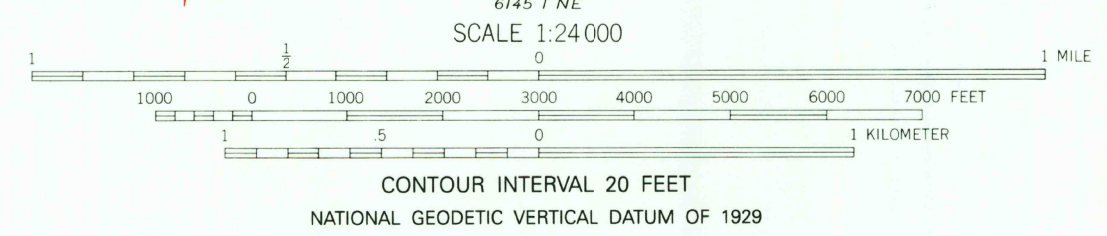
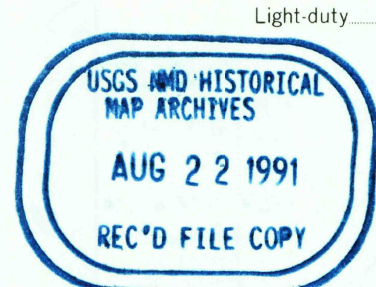


Mapped, edited, and published by the Geological Survey
Control by USGS and NOS/NOAA
Topography by photogrammetric methods from aerial photographs
taken 1961. Field checked 1963
Polyconic projection. 1927 North American Datum
10,000-foot grid based on Texas coordinate system,
central zone
1000-meter Universal Transverse Mercator grid ticks, zone 14,
shown in blue
The difference between 1927 North American Datum and North
American Datum of 1983 (NAD 83) for 7.5 minute intersections is
given in USGS Bulletin 1875. The NAD 83 is shown by dashed
corner ticks
Fine red dashed lines indicate selected fence lines

Map photoinspected 1979
No major culture or drainage changes observed



THIS MAP COMPLIES WITH NATIONAL MAP ACCURACY STANDARDS
FOR SALE BY U.S. GEOLOGICAL SURVEY
DENVER, COLORADO 80225, OR RESTON, VIRGINIA 22092
A FOLDER DESCRIBING TOPOGRAPHIC MAPS AND SYMBOLS IS AVAILABLE ON REQUEST



ROAD CLASSIFICATION
Light-duty ————— Unimproved dirt —————
PECAN SPRINGS, TEX.
31099-A1-TF-024
1963
PHOTOINSPECTED 1979
DMA 6146 II SE-SERIES V882