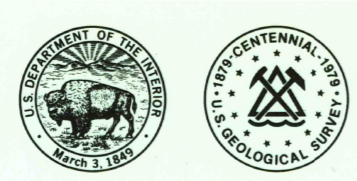


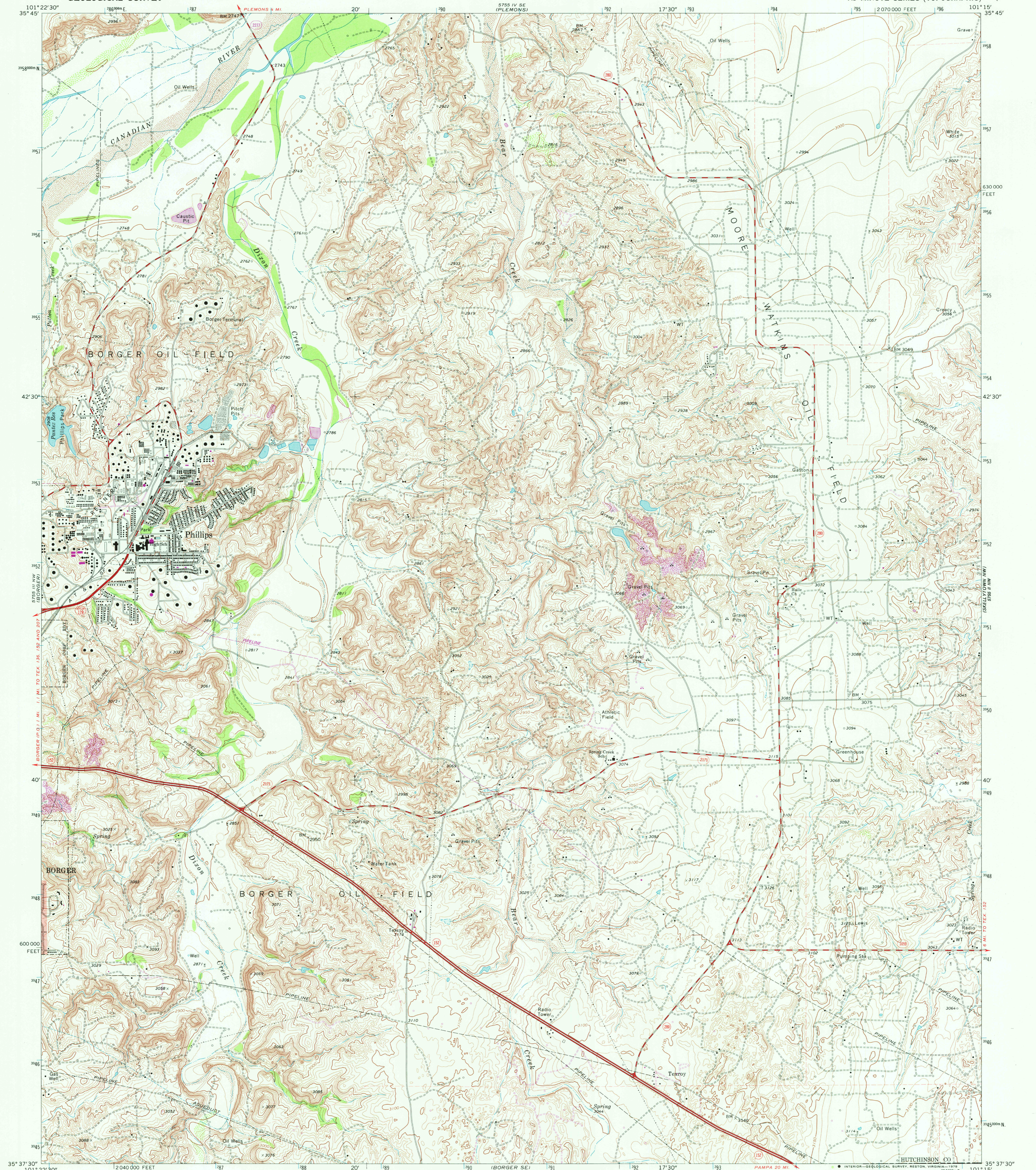
57° 15' N
101° 15' W

UNITED STATES
DEPARTMENT OF THE INTERIOR
GEOLOGICAL SURVEY

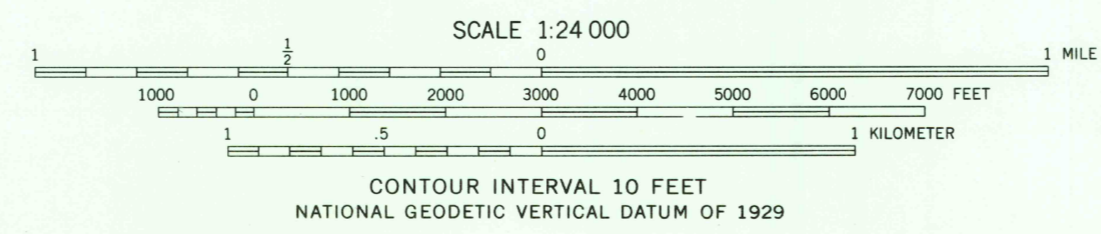
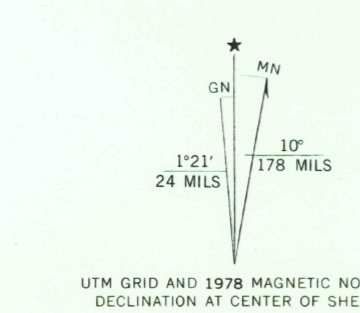


PHILLIPS QUADRANGLE
TEXAS—HUTCHINSON CO.
7.5 MINUTE SERIES (TOPOGRAPHIC)

57° 15' N
101° 15' W



Mapped, edited, and published by the Geological Survey
Control by USGS and NOS/NOAA
Topography by photogrammetric methods from aerial photographs taken 1951 and by planimetric surveys 1953
Revised from aerial photographs taken 1969. Field checked 1970
Polyconic projection. 1927 North American datum
10,000-foot grid based on Texas coordinate system, north zone
1000-meter Universal Transverse Mercator grid ticks, zone 14, shown in blue
Red tint indicates areas in which only landmark buildings are shown
Fine red dashed lines indicate selected fence lines
Revisions shown in purple compiled from aerial photographs taken 1977 and other source data. This information not field checked. Map edited 1978



ROAD CLASSIFICATION

Primary highway, hard surface	Light-duty road, hard or improved surface
Secondary highway, hard surface	Unimproved road
Interstate Route	U. S. Route
	State Route

THIS MAP COMPLIES WITH NATIONAL MAP ACCURACY STANDARDS
FOR SALE BY U. S. GEOLOGICAL SURVEY, DENVER, COLORADO 80225, OR RESTON, VIRGINIA 22092
A FOLDER DESCRIBING TOPOGRAPHIC MAPS AND SYMBOLS IS AVAILABLE ON REQUEST

3501-424

USGS
Historical File
Topographic Division

PHILLIPS, TEX.
N3537.5-W10115.7.5

1970
PHOTOREVISED 1978
DMA 5755 III NE—SERIES V882

APR 11 1978

2350