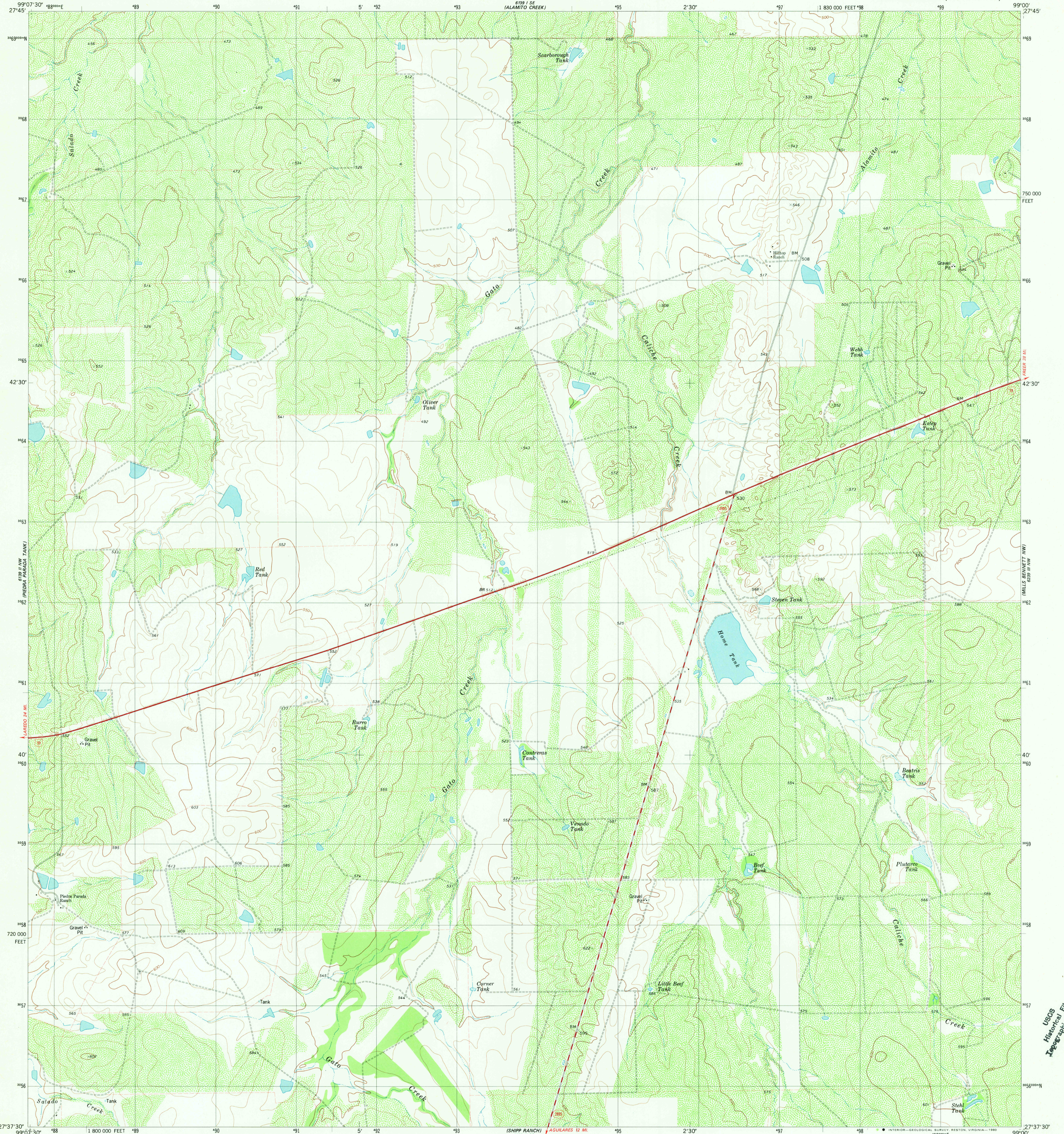


6139 II SW (PATO CREEK)

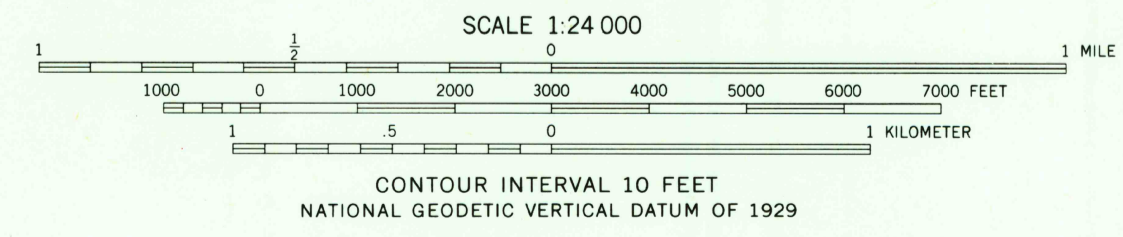
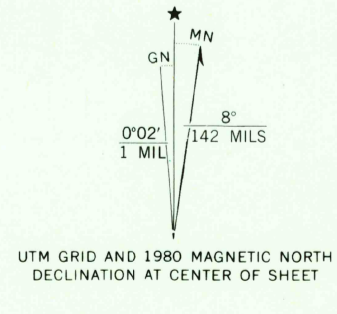
UNITED STATES DEPARTMENT OF THE INTERIOR GEOLOGICAL SURVEY

PIEDRA PARADA RANCH QUADRANGLE TEXAS—WEBB CO. 7.5 MINUTE SERIES (TOPOGRAPHIC)

6139 IV SW (MILLS BARNETT SOUTH)



Mapped, edited, and published by the Geological Survey Control by USGS and NOS/NOAA Topography by photogrammetric methods from aerial photographs taken 1974. Field checked 1975. Map edited 1980 Projection and 10,000-foot grid ticks: Texas coordinate system, south zone (Lambert conformal conic) 1000-meter Universal Transverse Mercator grid, zone 14 1927 North American datum To place on the predicted North American Datum 1983 move the projection lines 27 meters south and 31 meters east as shown by dashed corner ticks Fine red dashed lines indicate selected fence lines



CONTOUR INTERVAL 10 FEET NATIONAL GEODETIC VERTICAL DATUM OF 1929



ROAD CLASSIFICATION table with symbols for Primary highway, Secondary highway, Interstate Route, U. S. Route, State Route, Light-duty road, Unimproved road.

THIS MAP COMPLIES WITH NATIONAL MAP ACCURACY STANDARDS FOR SALE BY U. S. GEOLOGICAL SURVEY, DENVER, COLORADO 80225, OR RESTON, VIRGINIA 22092 A FOLDER DESCRIBING TOPOGRAPHIC MAPS AND SYMBOLS IS AVAILABLE ON REQUEST

2799-414

Historical File Topographic Division

PIEDRA PARADA RANCH, TEX. N2737.5-W9900/7.5

1980

DMA 6139 II NE—SERIES V882

FEB 19 1981

1950

USGS Historical File Topographic Division