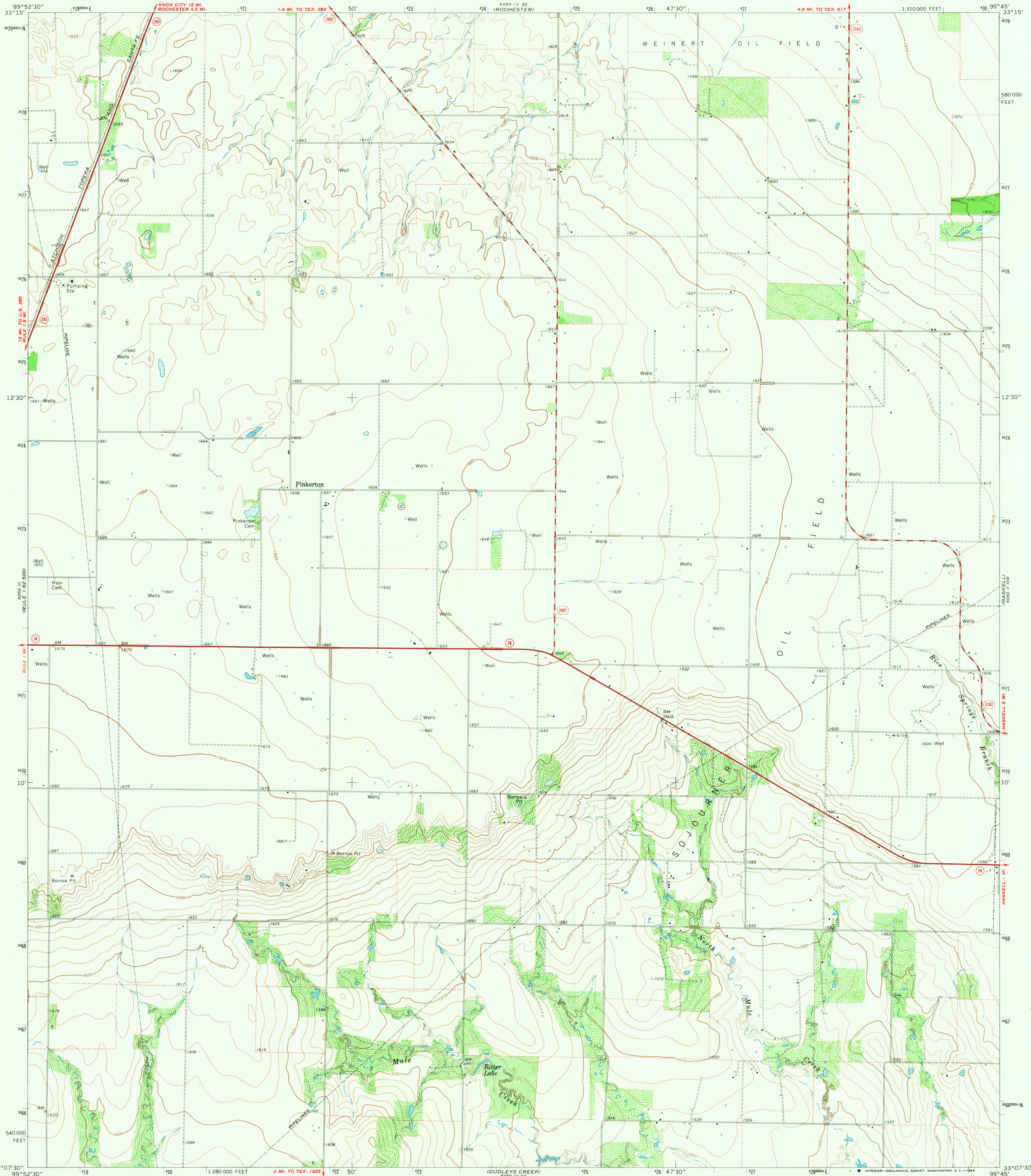


UNITED STATES
DEPARTMENT OF THE INTERIOR
GEOLOGICAL SURVEY

PINKERTON QUADRANGLE
TEXAS-HASKELL CO.
7.5 MINUTE SERIES (TOPOGRAPHIC)
NE 1/4 RULE 15' QUADRANGLE



Mapped, edited, and published by the Geological Survey

Control by USGS and USC&GS

Topography by photogrammetric methods from aerial

photographs taken 1965 and planetable surveys 1966

Polyconic projection. 1927 North American datum

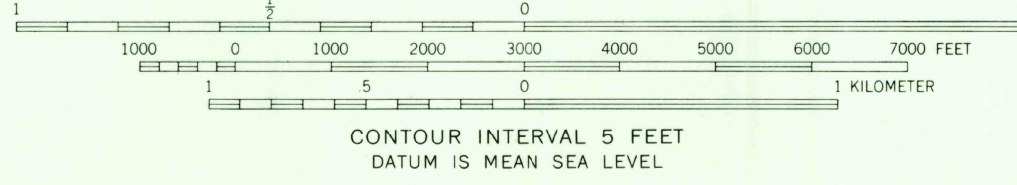
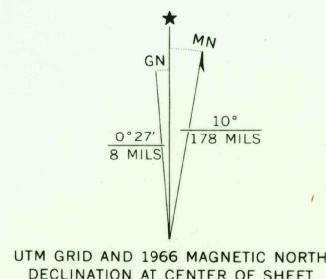
10,000-foot grid based on Texas coordinate system,

north central zone

1000-meter Universal Transverse Mercator grid ticks,

zone 14, shown in blue

Fine red dashed lines indicate selected fence lines



SCALE 1:24,000

CONTOUR INTERVAL 5 FEET

DATUM IS MEAN SEA LEVEL

THIS MAP COMPLIES WITH NATIONAL MAP ACCURACY STANDARDS
FOR SALE BY U.S. GEOLOGICAL SURVEY, DENVER, COLORADO 80225, OR WASHINGTON, D. C. 20242
A FOLDER DESCRIBING TOPOGRAPHIC MAPS AND SYMBOLS IS AVAILABLE ON REQUEST



U.S.G.S.
FILE COPY
TOPOGRAPHIC DIVISION

ROAD CLASSIFICATION
Heavy-duty ——— Light-duty ———
Medium-duty ——— Unimproved dirt ———
State Route

PINKERTON, TEX.
NE 1/4 RULE 15' QUADRANGLE
N3307.5—W9945.7.5

1966

AMS 6050 III NE—SERIES V862

2845
OCT 8 1969