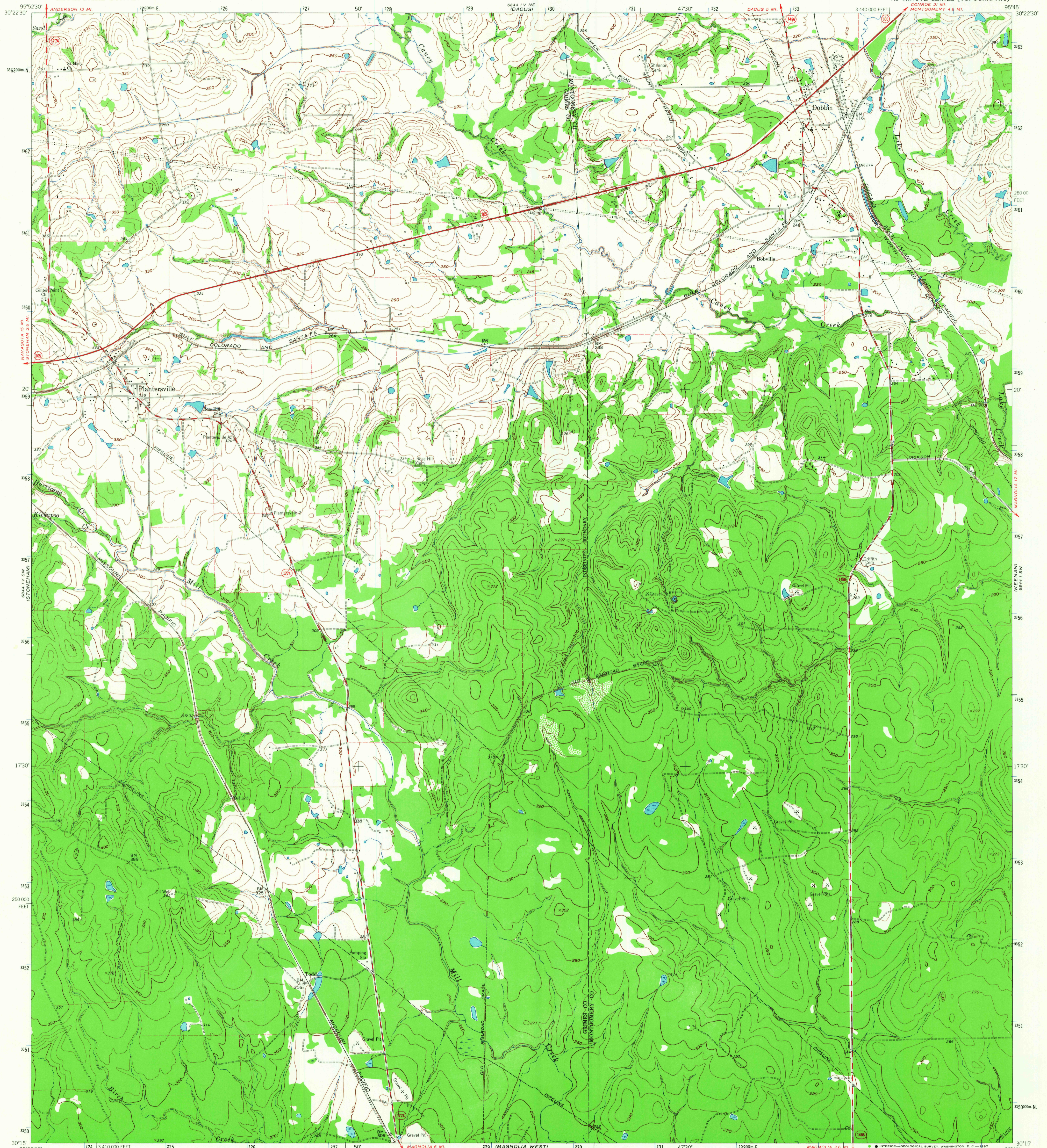


6844 IV NW
(ANDERSON)

UNITED STATES
DEPARTMENT OF THE INTERIOR
GEOLOGICAL SURVEY

PLANTERSVILLE QUADRANGLE
TEXAS
7.5 MINUTE SERIES (TOPOGRAPHIC)

6844 I NW
(MONTGOMERY)



Mapped, edited, and published by the Geological Survey

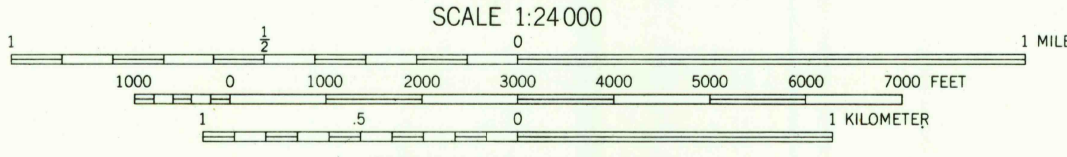
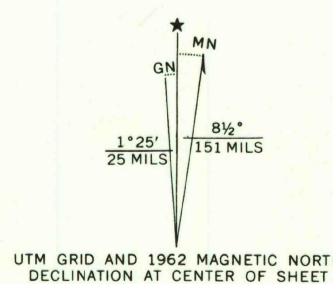
Control by USGS and USC&GS

Topography by photogrammetric methods from aerial photographs taken 1957. Field checked 1962

Polyconic projection: 1927 North American datum
10,000-foot grid based on Texas coordinate system, central zone
1000-meter Universal Transverse Mercator grid ticks,
zone 15, shown in blue

Fine red dashed lines indicate selected fence lines

WALLER NW
6844 III NW



CONTOUR INTERVAL 10 FEET
DOTTED LINES REPRESENT 5 FOOT CONTOURS
DATUM IS MEAN SEA LEVEL

ROAD CLASSIFICATION

Heavy duty	Light-duty
Medium-duty	Unimproved dirt
State Route	



U.S.G.S.
TOPOGRAPHIC DIVISION

PLANTERSVILLE, TEX.
N3015-W9545/7.5

1962

AMS 6844 IV SE - SERIES V882

THIS MAP COMPLIES WITH NATIONAL MAP ACCURACY STANDARDS
FOR SALE BY U.S. GEOLOGICAL SURVEY, DENVER, COLORADO 80225, OR WASHINGTON, D. C. 20242
A FOLDER DESCRIBING TOPOGRAPHIC MAPS AND SYMBOLS IS AVAILABLE ON REQUEST

6844 I NE
(MAGNOLIA EAST)

4590

JUN 2 1967