

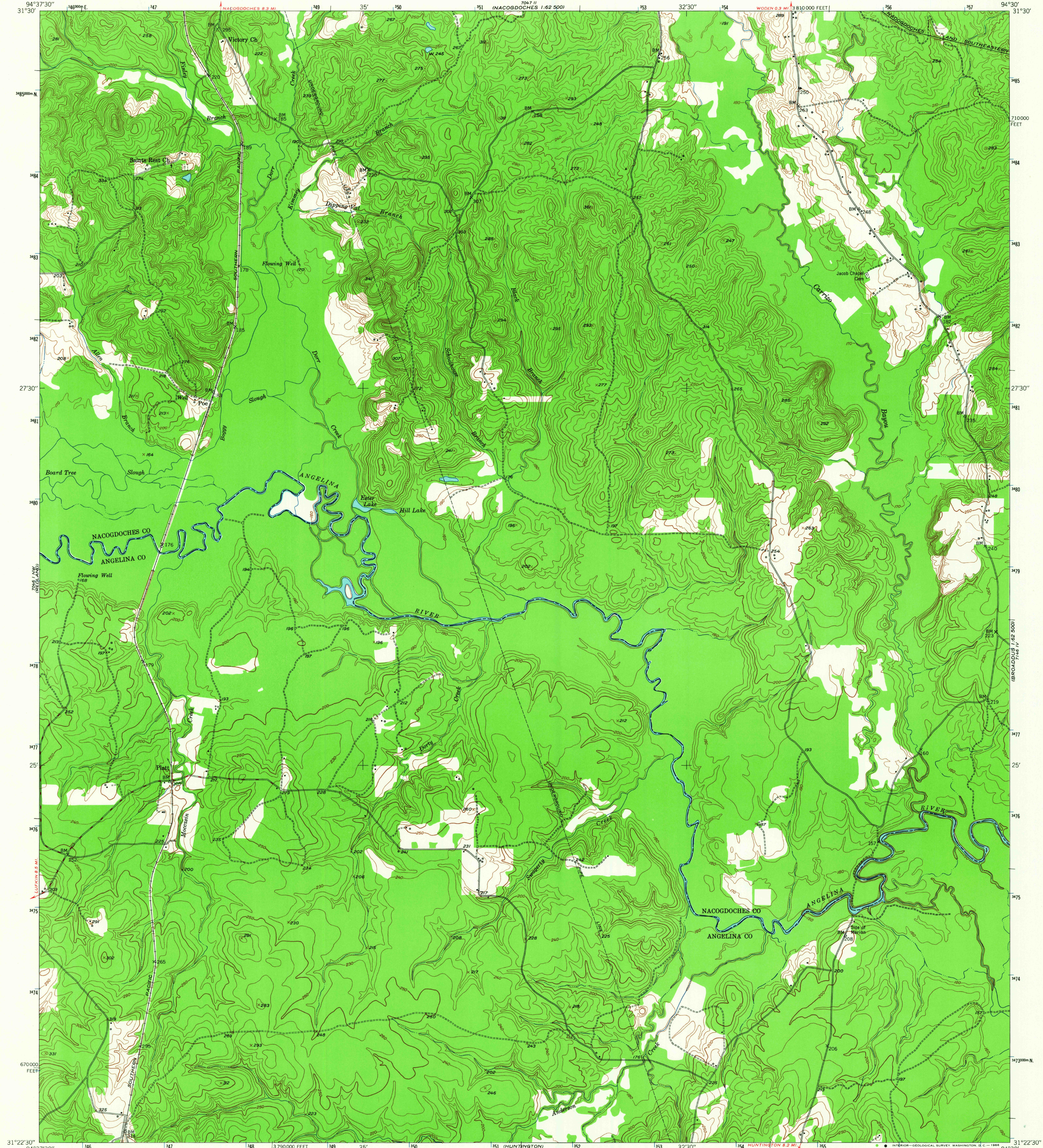
NACOGDOCHES
7.5 MINUTE
1:62,500

UNITED STATES
DEPARTMENT OF THE INTERIOR
GEOLOGICAL SURVEY

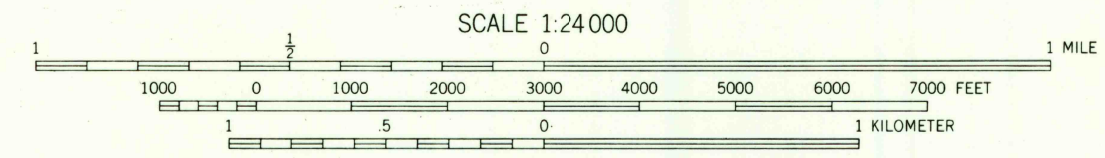
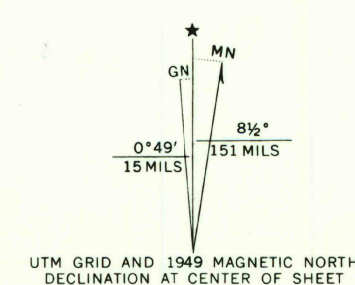
UNITED STATES
DEPARTMENT OF THE ARMY
CORPS OF ENGINEERS

PLATT QUADRANGLE
TEXAS
7.5 MINUTE SERIES (TOPOGRAPHIC)

7.5 MINUTE
1:62,500
MARSHVILLE



Maped, edited, and published by the Geological Survey
Control by USGS and USC&GS
Culture and drainage in part compiled from
aerial photographs taken 1947
Topography by plane-table methods 1948 - 1949
Polyconic projection. 1927 North American datum
10,000-foot grid based on Texas coordinate system,
central zone
1000-meter Universal Transverse Mercator grid ticks,
zone 15, shown in blue



CONTOUR INTERVAL 10 FEET
DATUM IS MEAN SEA LEVEL

THIS MAP COMPLIES WITH NATIONAL MAP ACCURACY STANDARDS
FOR SALE BY U.S. GEOLOGICAL SURVEY, DENVER, COLORADO 80225 OR WASHINGTON, D. C. 20242
A FOLDER DESCRIBING TOPOGRAPHIC MAPS AND SYMBOLS IS AVAILABLE ON REQUEST

ROAD CLASSIFICATION

HARD SURFACE ALL WEATHER ROADS	DRY WEATHER ROADS
Heavy-duty ——— 4 LANE IS LANE	Improved dirt ———
Medium-duty ——— 4 LANE IS LANE	Unimproved dirt ———
Loose surface, graded, or narrow hard surface ———	—
U. S. Route ———	State Route ———

U.S.G.S.
FILE COPY
TOPOGRAPHIC DIVISION

PLATT, TEX.
N3122.5-W9430/7.5
1949
AMS 7046 I NE-SERIES V862

1495
1949