

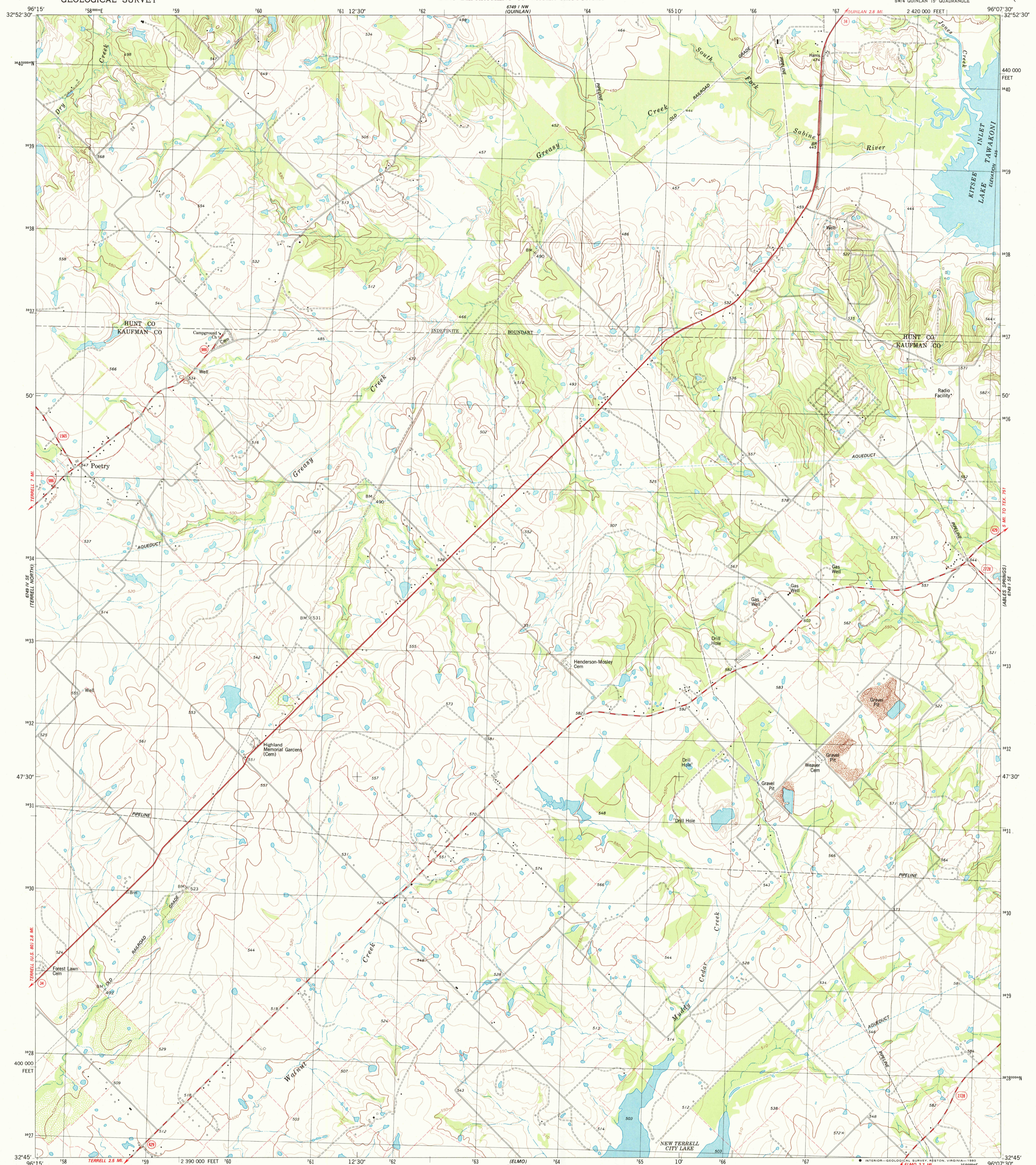
POETRY CITY  
6749 I NW  
QUINLAN

UNITED STATES  
DEPARTMENT OF THE INTERIOR  
GEOLOGICAL SURVEY

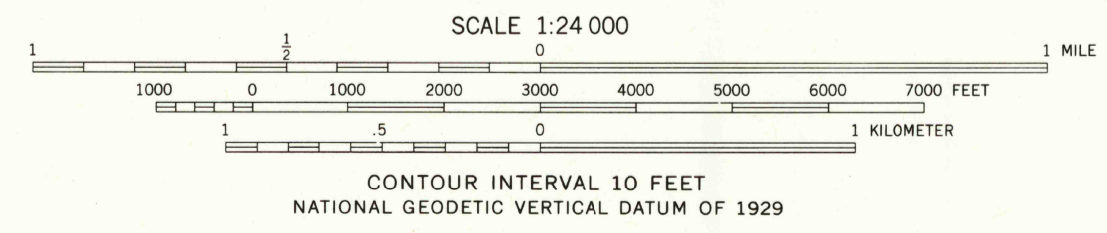
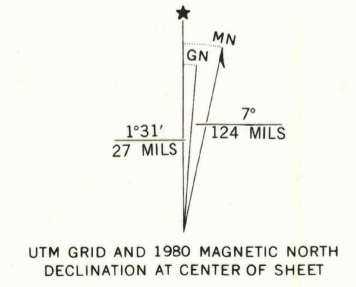
STATE OF TEXAS  
TEXAS DEPARTMENT OF WATER RESOURCES

POETRY QUADRANGLE  
TEXAS  
7.5 MINUTE SERIES (TOPOGRAPHIC)  
SW/4 QUINLAN 15' QUADRANGLE

6749 I NE  
QUINLAN  
TAWAKONI



Mapped, edited, and published by the Geological Survey  
 Control by USGS and NOS/NOAA  
 Topography by photogrammetric methods from aerial photographs taken 1975. Field checked 1976. Map edited 1980  
 Projection and 10,000-foot grid ticks: Texas coordinate system, north central zone (Lambert conformal conic) 1000-meter Universal Transverse Mercator grid, zone 14 1927 North American datum  
 To place on the predicted North American Datum 1983 move the projection lines 11 meters south and 24 meters east as shown by dashed corner ticks  
 Fine red dashed lines indicate selected fence lines



ROAD CLASSIFICATION

Primary highway, hard surface	Light-duty road, hard or improved surface
Secondary highway, hard surface	Unimproved road

Interstate Route  
 U.S. Route  
 State Route

USGS  
 Historical File  
 Topographic Division

POETRY, TEX.  
 SW/4 QUINLAN 15' QUADRANGLE  
 N3245-W9607.5/7.5

JUN 19 1980

2250

1980  
 DMA 6749 I SW-SERIES V882