

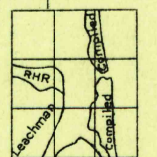
Advance sheet  
Subject to correction



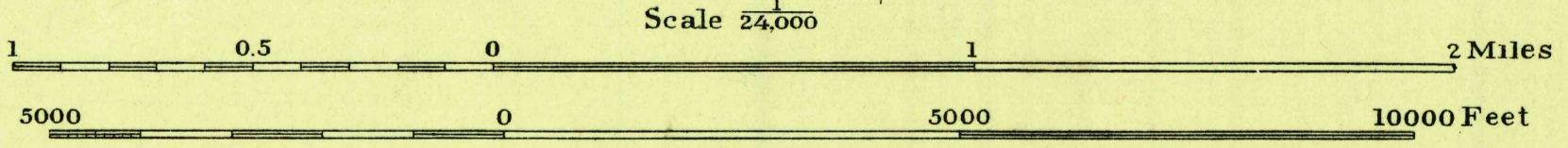
245 000  
YARDS

915 000  
YARDS

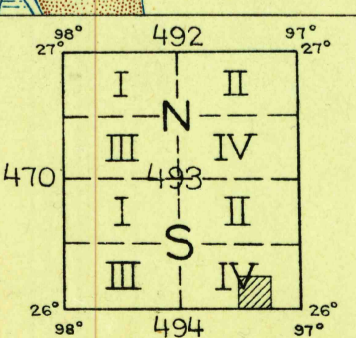
H. H. Hodgeson, Division Engineer  
Topography by R.H. Reineck and J.B. Leachman  
Culture and drainage of Padre and Brazos Islands,  
compiled from aerial photographs  
Control by U. S. Geological Survey and  
U. S. Coast and Geodetic Survey  
Surveyed in 1929



APPROXIMATE MEAN  
DECLINATION, 1929



Scale 24,000  
Contour interval 1 foot  
Datum is mean sea level



Polyconic projection. North American datum  
5000 yard grid based upon U. S. zone system, D

USGS  
Historical File  
Topographic Division

POINT ISABEL, TEX.  
PORT

