

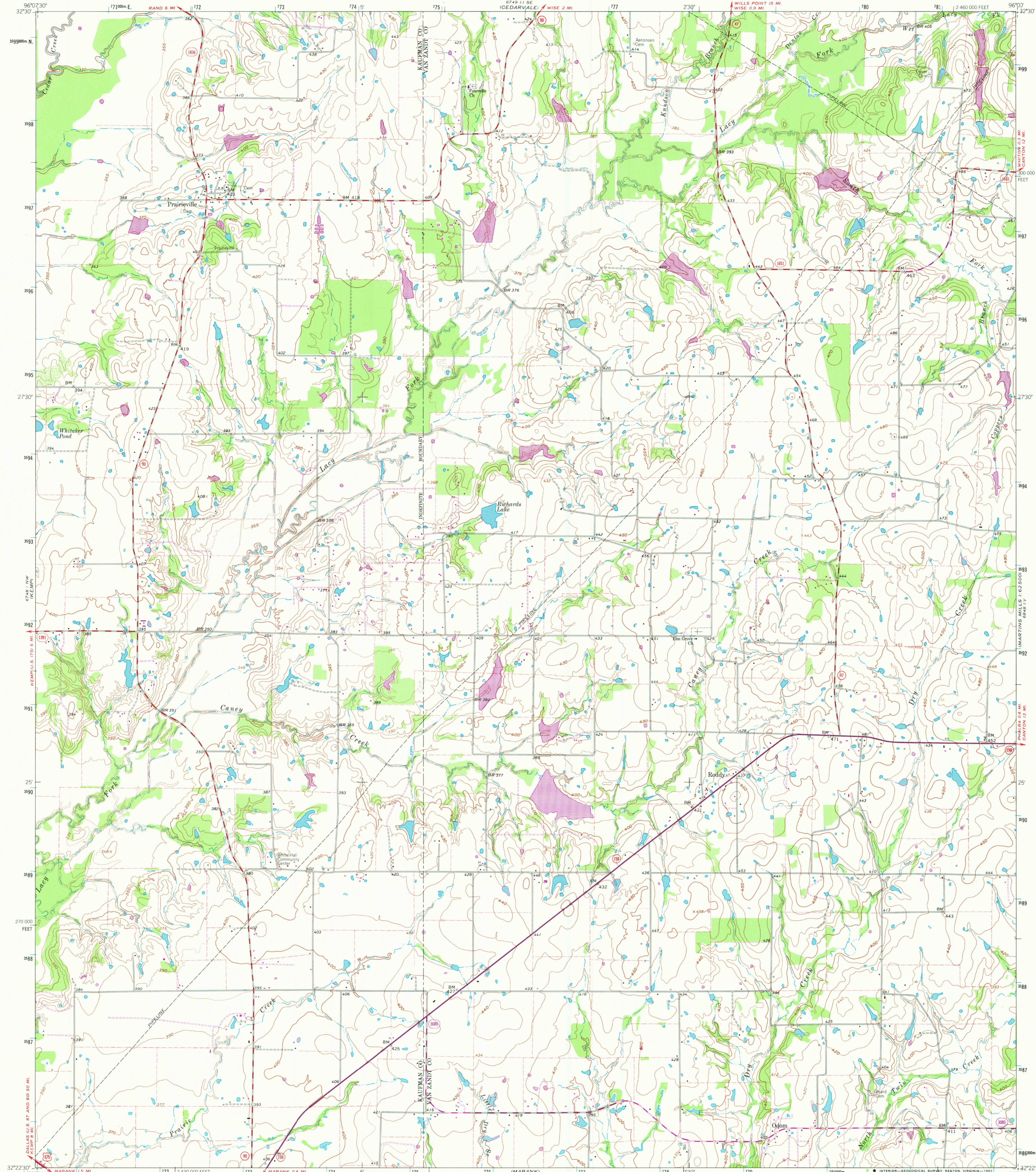
6748 11 SW  
6748 11 SW  
6748 11 SW

UNITED STATES  
DEPARTMENT OF THE INTERIOR  
GEOLOGICAL SURVEY

STATE OF TEXAS  
TEXAS WATER COMMISSION

PRAIRIEVILLE QUADRANGLE  
TEXAS  
7.5 MINUTE SERIES (TOPOGRAPHIC)

6748 11 SW  
6748 11 SW  
6748 11 SW



Mapped, edited, and published by the Geological Survey  
Control by USGS and NOS/NOAA

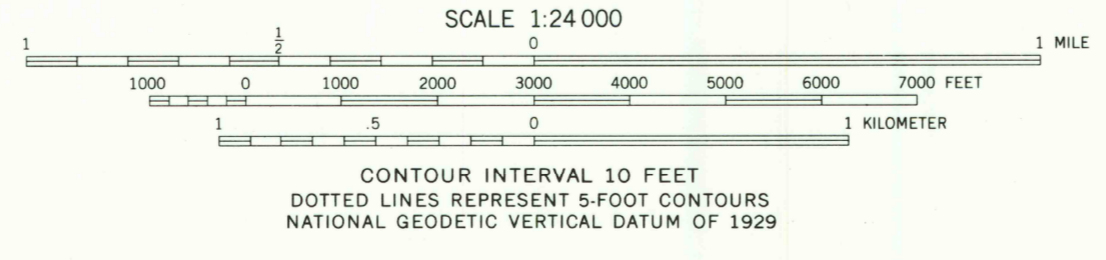
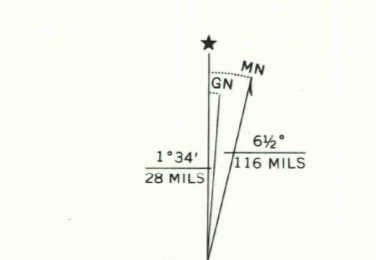
Topography by photogrammetric methods from aerial photographs taken 1962. Field checked 1962

Polyconic projection. 1927 North American datum. 10,000-foot grid based on Texas coordinate system, north central zone. 1000-meter Universal Transverse Mercator grid ticks, zone 14, shown in blue.

Fine red dashed lines indicate selected fence lines

To place on the predicted North American Datum 1983 move the projection lines 12 meters south and 24 meters east as shown by dashed corner ticks

Revisions shown in purple and woodland compiled from aerial photographs taken 1978 and other source data. This information not field checked. Map edited 1981



ROAD CLASSIFICATION

Heavy-duty ——— Light-duty ———

Medium-duty ——— Unimproved dirt ———

U.S. Route      State Route

THIS MAP COMPLIES WITH NATIONAL MAP ACCURACY STANDARDS  
FOR SALE BY U. S. GEOLOGICAL SURVEY, DENVER, COLORADO 80225, OR RESTON, VIRGINIA 22092  
A FOLDER DESCRIBING TOPOGRAPHIC MAPS AND SYMBOLS IS AVAILABLE ON REQUEST

3296-144

PRAIRIEVILLE, TEX.  
N3222.5-W9600/7.5

1962  
PHOTOREVISED 1981  
DMA 6748 11 NE-SERIES V882

RETURN TO:  
USGS AND HISTORICAL MAP ARCHIVES

MAR 25 1982  
IMPRINTED AT THE  
GEOLOGICAL SURVEY

1907