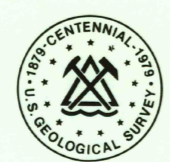


628 IN E
COLUMBIAN

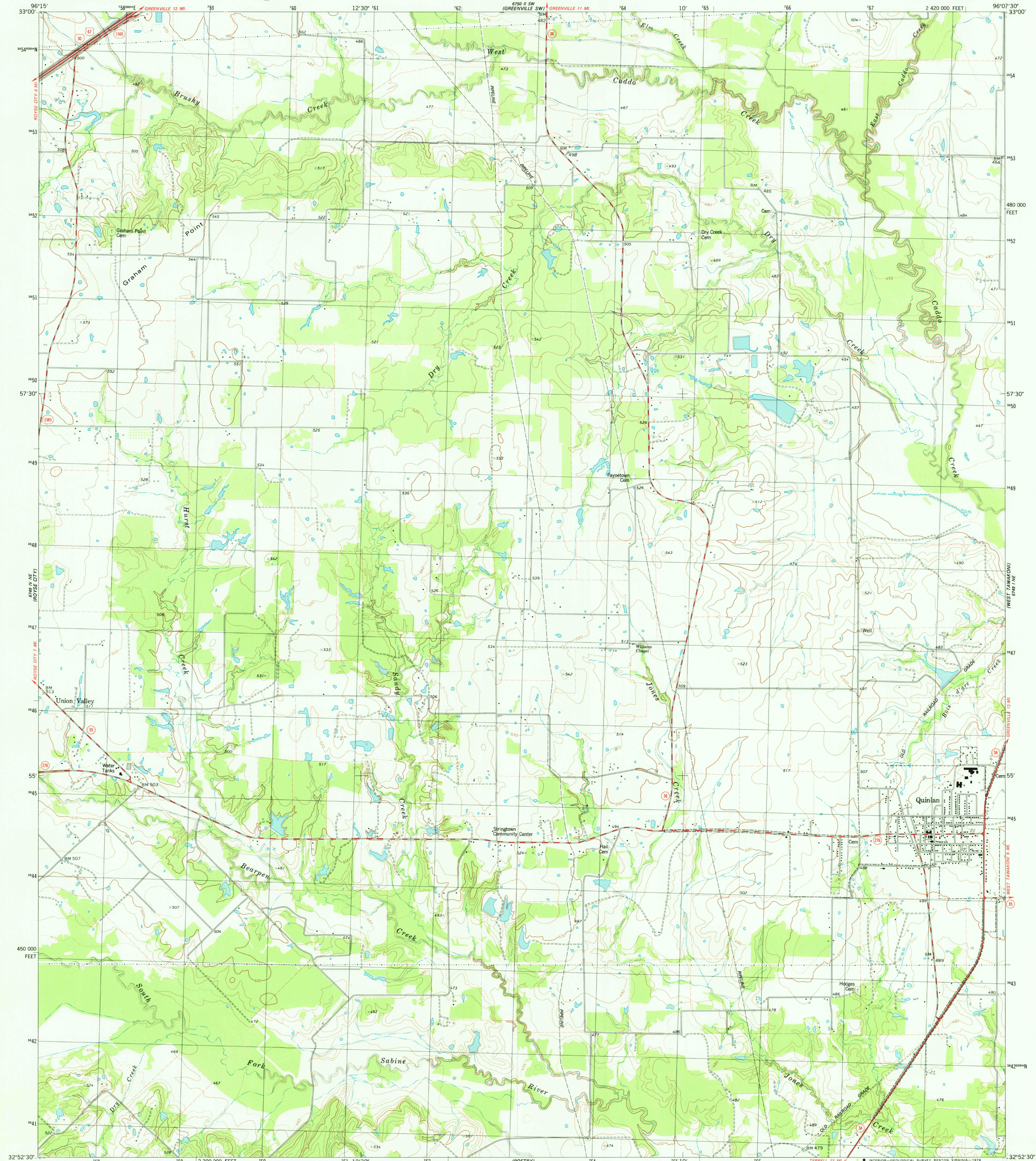
UNITED STATES
DEPARTMENT OF THE INTERIOR
GEOLOGICAL SURVEY



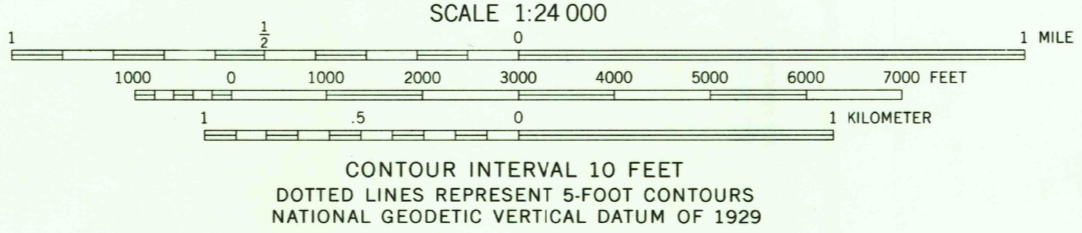
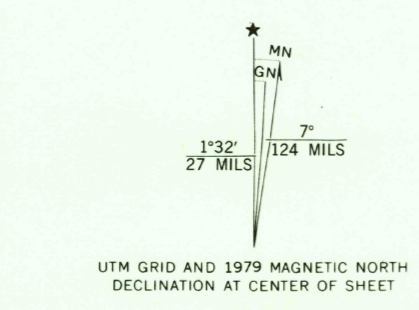
STATE OF TEXAS
TEXAS DEPARTMENT OF WATER RESOURCES

QUINLAN QUADRANGLE
TEXAS—HUNT CO.
7.5 MINUTE SERIES (TOPOGRAPHIC)
NW 4 QUINLAN 15' QUADRANGLE

628 IN E
GREENVILLE SE 1



Maped, edited, and published by the Geological Survey
Control by USGS and NOS/NOAA
Topography by photogrammetric methods from aerial photographs
taken 1975. Field checked 1976. Map edited 1979
Projection and 10,000-foot grid ticks: Texas
coordinate system, north central zone (Lambert conformal conic)
1000-meter Universal Transverse Mercator grid, zone 14
1927 North American datum
To place on the predicted North American Datum 1983
move the projection lines 10 meters south and
24 meters east as shown by dashed corner ticks
Fine red dashed lines indicate selected fence lines



ROAD CLASSIFICATION

Primary highway, hard surface	Light-duty road, hard or improved surface
Secondary highway, hard surface	Unimproved road
Interstate Route	U. S. Route
	State Route

THIS MAP COMPLIES WITH NATIONAL MAP ACCURACY STANDARDS
FOR SALE BY U. S. GEOLOGICAL SURVEY, DENVER, COLORADO 80225, OR RESTON, VIRGINIA 22092
A FOLDER DESCRIBING TOPOGRAPHIC MAPS AND SYMBOLS IS AVAILABLE ON REQUEST

3296-443

QUINLAN, TEX.
NW 4 QUINLAN 15' QUADRANGLE
N3252.5—W9607.5/7.5

1979
DMA 6749 I NW—SERIES V882

