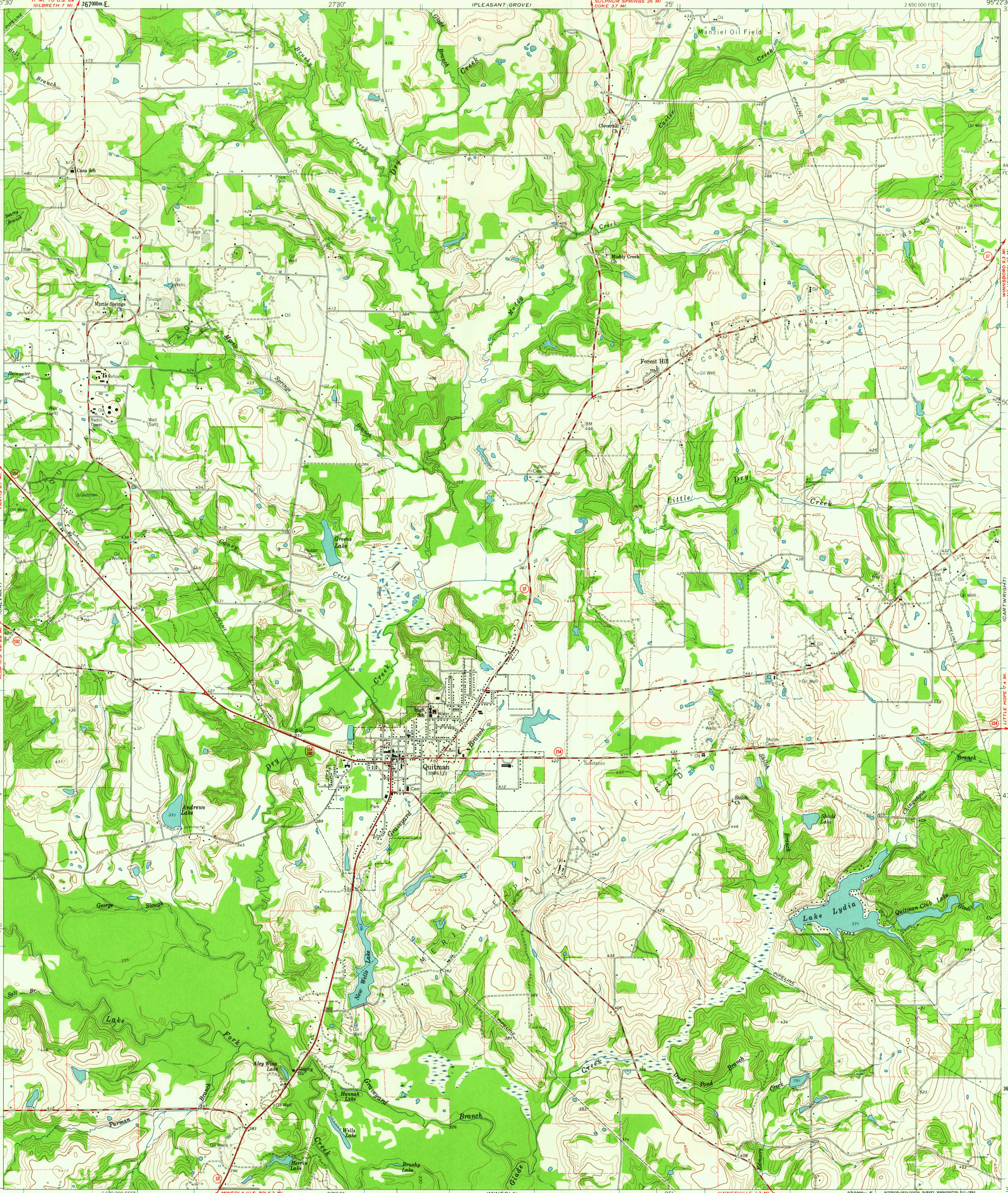


(YANTS)
32°52'30"
36°39'00"N
50'
47°30'
410 000
FEET
32°45'
95°30'

UNITED STATES
DEPARTMENT OF THE INTERIOR
GEOLOGICAL SURVEY

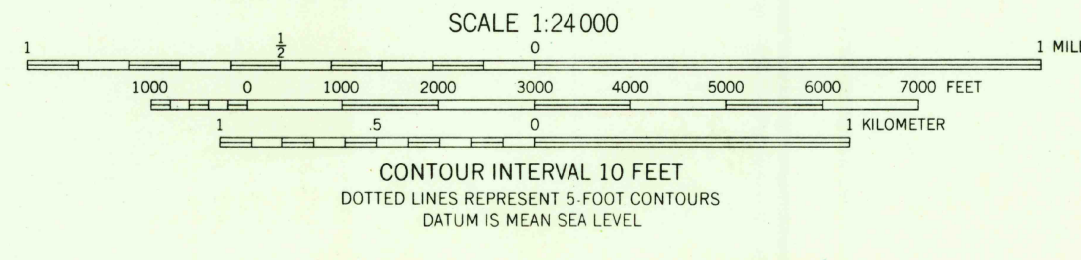
QUITMAN QUADRANGLE
TEXAS-WOOD CO.
7.5 MINUTE SERIES (TOPOGRAPHIC)

(WINSBORO)
95°22'30"
32°52'30"
2 650 000 FEET
440 000
FEET
50'
47°30'
362 700m. N.
32°45'
95°22'30"



Mapped, edited, and published by the Geological Survey
Control by USGS and USC&GS
Topography by photogrammetric methods from aerial
photographs taken 1957-1958. Field checked 1960
Polyconic projection. 1927 North American datum
10,000-foot grid based on Texas coordinate system,
north central zone
1000-meter Universal Transverse Mercator grid ticks,
zone 15, shown in blue
Fine red dashed lines indicate selected fence and field lines
where generally visible on aerial photographs
This information is unchecked

TRUE NORTH
MAGNETIC NORTH
APPROXIMATE MEAN
DECLINATION, 1960



THIS MAP COMPLIES WITH NATIONAL MAP ACCURACY STANDARDS
FOR SALE BY U.S. GEOLOGICAL SURVEY, DENVER 25, COLORADO OR WASHINGTON 25, D.C.
A FOLDER DESCRIBING TOPOGRAPHIC MAPS AND SYMBOLS IS AVAILABLE ON REQUEST



ROAD CLASSIFICATION
Heavy-duty ——— Light-duty ———
Medium-duty ——— Unimproved dirt ———
○ State Route

USGS
FILE COPY
TOPOGRAPHIC DIVISION

QUITMAN, TEX.
N3245-W9522.5/7.5
1960

JUL 23 1962
2580