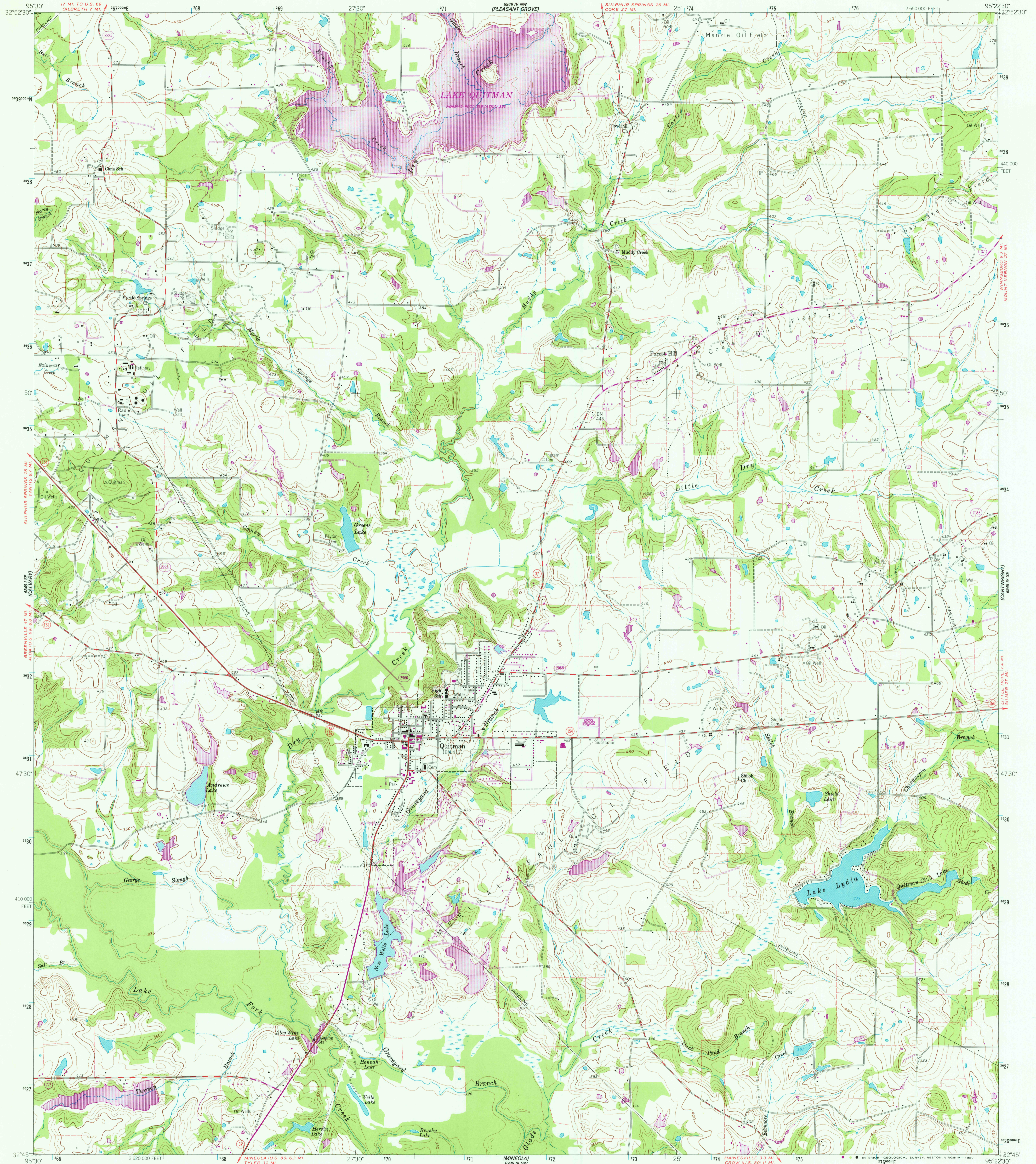


Revised
Davis

UNITED STATES
DEPARTMENT OF THE INTERIOR
GEOLOGICAL SURVEY

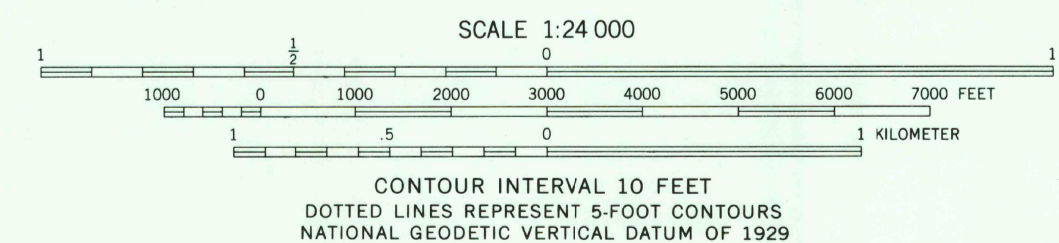
QUITMAN QUADRANGLE
TEXAS—WOOD CO.
7.5 MINUTE SERIES (TOPOGRAPHIC)

2650 000
WWW.GS001



Mapped, edited, and published by the Geological Survey
Control by USGS and USC&GS
Topography by photogrammetric methods from aerial
photographs taken 1957–1958. Field checked 1960
Polyconic projection
10,000-foot grid based on Texas coordinate system,
north central zone
1000-meter Universal Transverse Mercator grid ticks,
zone 15, shown in blue. 1927 North American Datum
To place on the predicted North American Datum 1983
move the projection lines 11 meters south and
22 meters east as shown by dashed corner ticks
Fine red dashed lines indicate selected fence and field lines where
generally visible on aerial photographs. This information is unchecked

Revisions shown in purple and woodland compiled from
aerial photographs taken 1973 and other source data
This information not field checked. Map edited 1980



THIS MAP COMPLIES WITH NATIONAL MAP ACCURACY STANDARDS
FOR SALE BY U. S. GEOLOGICAL SURVEY, DENVER, COLORADO 80225, OR RESTON, VIRGINIA 22092
A FOLDER DESCRIBING TOPOGRAPHIC MAPS AND SYMBOLS IS AVAILABLE ON REQUEST



QUADRANGLE LOCATION

ROAD CLASSIFICATION
Heavy-duty ——— Light-duty ———
Medium-duty ——— Unimproved dirt ———
State Route

USGS
Historical File
Topographic Division

QUITMAN, TEX.
N3245—W9522.5/7.5

1960
PHOTOREVISED 1980
DMA 6949 IV SW—SERIES V882

AUG 20 1980

2200