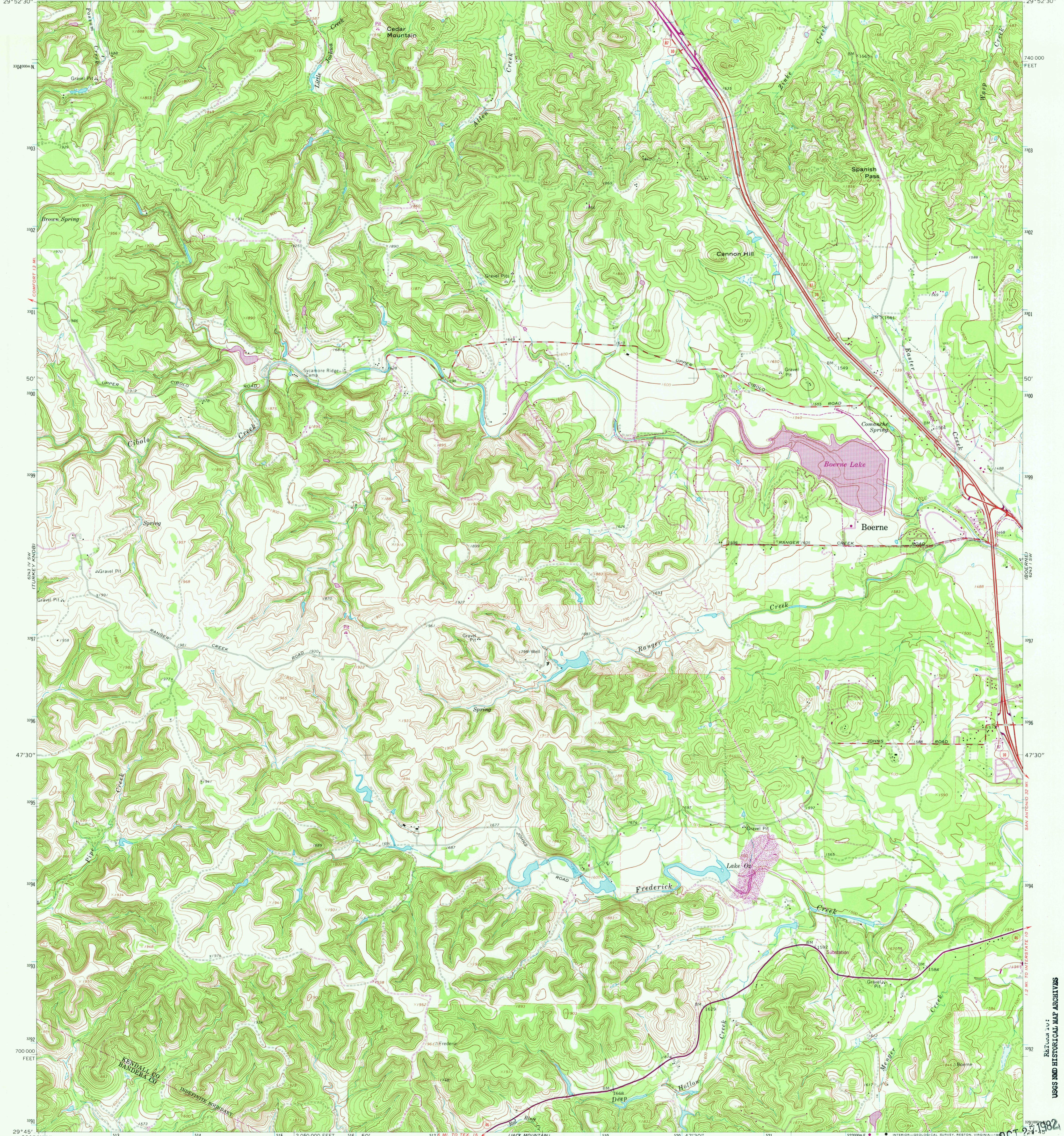
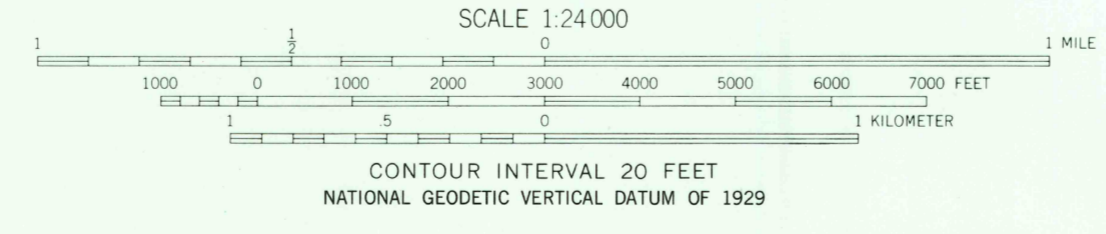
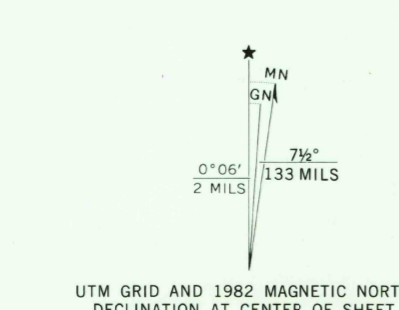


98° 52' 30" 1300000 E 14 15 16 50' 17 6243 IV NE (WARING) 19 COMFORT 10 MI 20 47' 30" 21 2 070 000 FEET 22 23 98° 45' 29' 52' 30"



Maped, edited, and published by the Geological Survey  
Control by USGS and NOS/NOAA  
Topography by photogrammetric methods from aerial photographs taken 1963. Field checked 1964  
Polyconic projection. 10,000-foot grid ticks based on Texas coordinate system, south central zone. 1000-meter Universal Transverse Mercator grid ticks, zone 14, shown in blue. 1927 North American Datum. To place on the predicted North American Datum 1983 move the projection lines 19 meters south and 30 meters east as shown by dashed corner ticks  
Fine red dashed lines indicate selected fence lines  
Revisions shown in purple and woodland compiled from aerial photographs taken 1979 and other sources. This information not field checked. Map edited 1982



ROAD CLASSIFICATION

Heavy-duty	Light-duty
Medium-duty	Unimproved dirt
Interstate Route	U.S. Route
	State Route

THIS MAP COMPLIES WITH NATIONAL MAP ACCURACY STANDARDS  
FOR SALE BY U.S. GEOLOGICAL SURVEY, DENVER, COLORADO 80225, OR RESTON, VIRGINIA 22092  
A FOLDER DESCRIBING TOPOGRAPHIC MAPS AND SYMBOLS IS AVAILABLE ON REQUEST

2998-331

RANGER CREEK, TEX.  
N2945-W9845/7.5  
1964  
PHOTOREVISED 1982  
DMA 6243 IV SE-SERIES V882

USGS AND HISTORICAL MAP ARCHIVES

1982  
1982