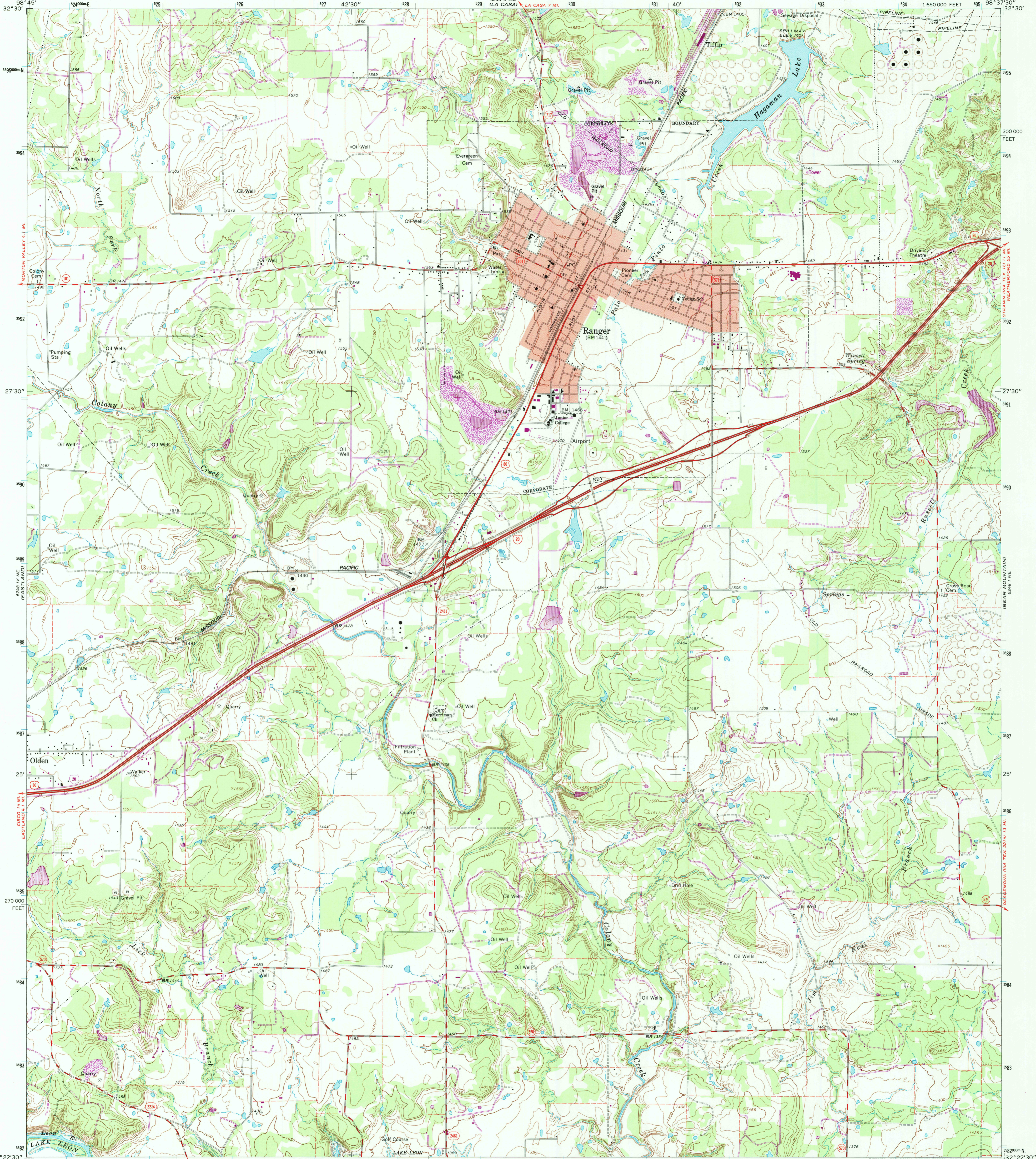


98° 45' W (LA CASA)

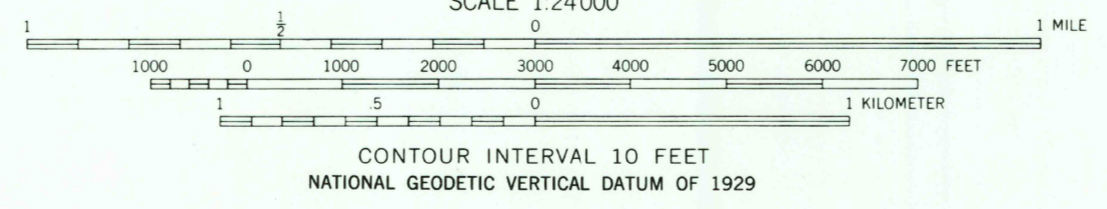
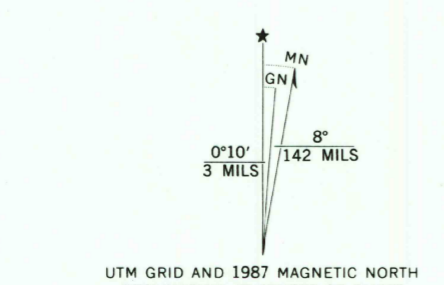
UNITED STATES
DEPARTMENT OF THE INTERIOR
GEOLOGICAL SURVEY

RANGER QUADRANGLE
TEXAS—EASTLAND CO.
7.5 MINUTE SERIES (TOPOGRAPHIC)

98° 37' 30" W (LA CASA)



Mapped, edited, and published by the Geological Survey
Control by USGS and USC&GS
Topography by photogrammetric methods from aerial photographs taken 1965. Field checked 1966
Polyconic projection. 1927 North American datum
10,000-foot grid based on Texas coordinate system, north central zone
1000-meter Universal Transverse Mercator grid ticks, zone 14, shown in blue
Red tint indicates areas in which only landmark buildings are shown
Area covered by dashed light-blue pattern are subject to controlled inundation
To place on the predicted North American Datum 1983, move the projection lines 11 meters south and 32 meters east as shown by dashed corner ticks



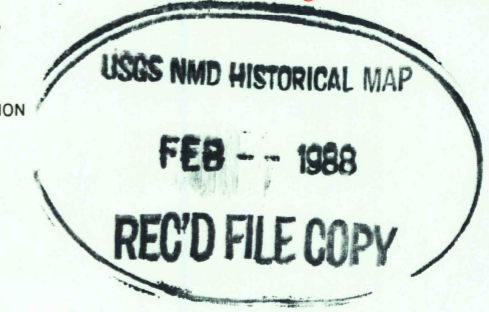
THIS MAP COMPLIES WITH NATIONAL MAP ACCURACY STANDARDS
FOR SALE BY U.S. GEOLOGICAL SURVEY, DENVER, COLORADO 80225, OR RESTON, VIRGINIA 22092
A FOLDER DESCRIBING TOPOGRAPHIC MAPS AND SYMBOLS IS AVAILABLE ON REQUEST

ROAD CLASSIFICATION

Heavy-duty	Light-duty
Medium-duty	Unimproved dirt
Interstate Route	U.S. Route
	Slate Route



QUADRANGLE LOCATION



RANGER, TEX.
32098-D6-TF-024
1966
PHOTOREVISED 1987
DMA 6248 1 NW—SERIES Y882

3298-243