

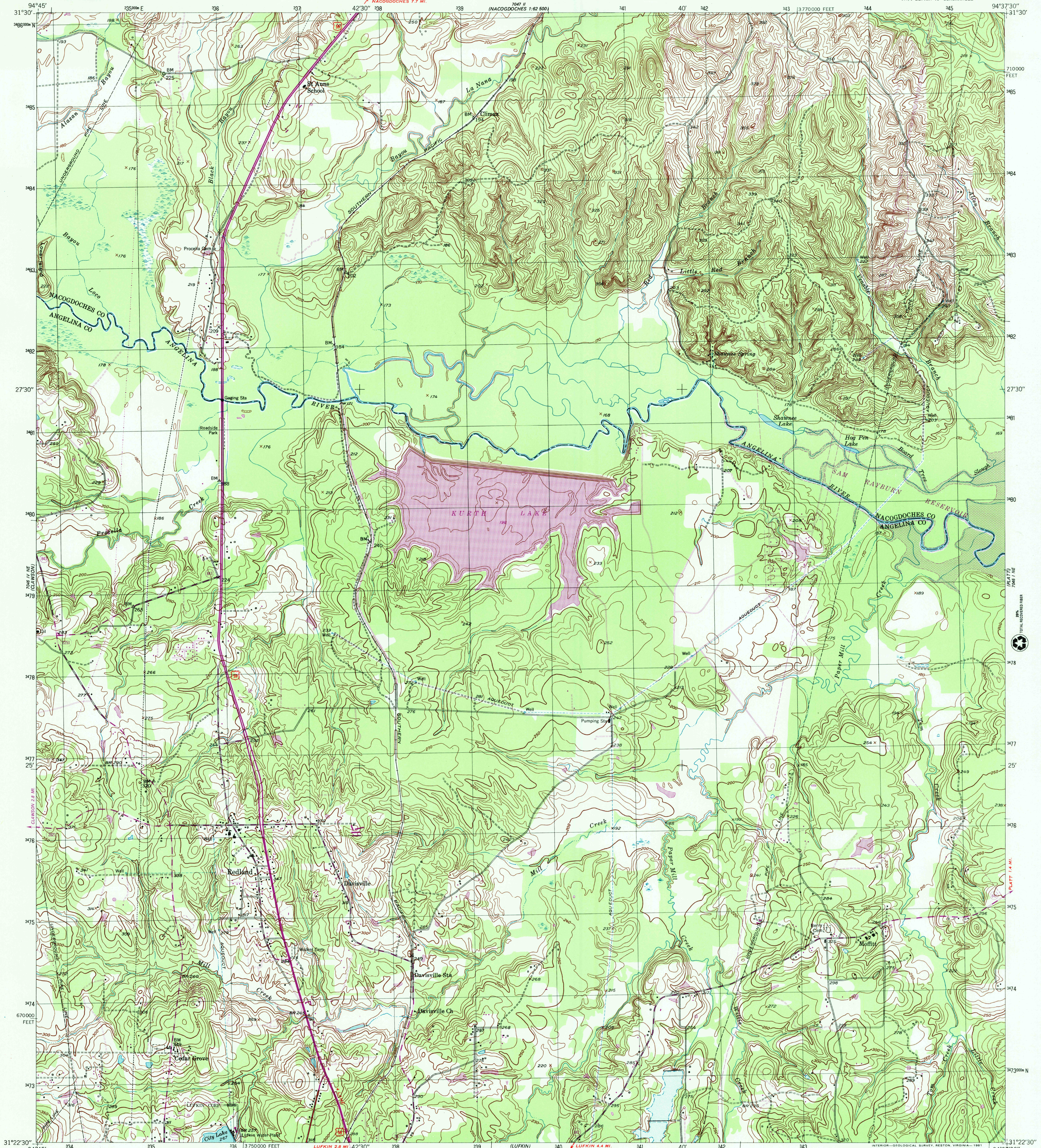
Scale 1:24,000
7.5 Minute Series



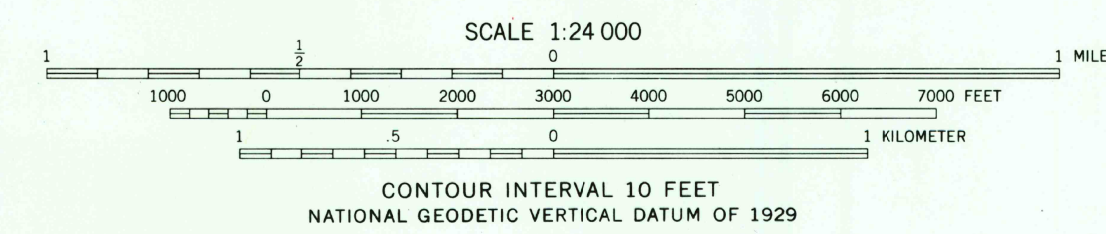
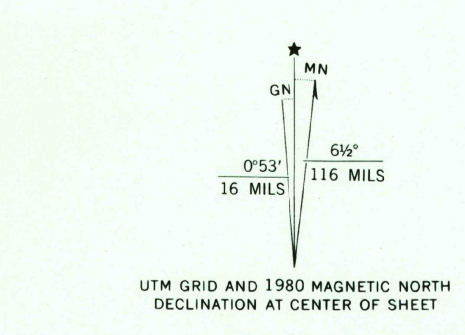
U.S. DEPARTMENT OF THE INTERIOR
U.S. GEOLOGICAL SURVEY

REDLAND QUADRANGLE
TEXAS
7.5 MINUTE SERIES (TOPOGRAPHIC)
NW4 LUFKIN 15' QUADRANGLE

Scale 1:24,000
7.5 Minute Series



Maped, edited, and published by the Geological Survey
Control by USGS and NOS/NOAA
Culture and drainage in part compiled from
aerial photographs taken 1947
Topography by plane-table methods 1948-1949
Polyconic projection. 1927 North American datum
10,000 foot grid based on Texas coordinate system,
central zone
1000-meter Universal Transverse Mercator grid, zone 15
To place on the predicted North American Datum 1983
move the projection lines 15 meters south and
20 meters east as shown by dashed corner ticks
Revisions shown in purple and woodland compiled from
aerial photographs taken 1977 and other source data
This information not field checked. Map edited 1980



ROAD CLASSIFICATION

HARD SURFACE ALL WEATHER ROADS	DRY WEATHER ROADS
Heavy-duty 1 LANE 16 LANE	Improved dirt
Medium-duty 1 LANE 16 LANE	Unimproved dirt

U. S. Route State Route

RECEIVED
SEP 30 2001
HISTORICAL MAP ARCHIVES

REDLAND, TEX.
NW4 LUFKIN 15' QUADRANGLE
N3122.5-W9437.517.5
EDITION OF 1960
PHOTOREVISED 1980
DMA 7046 I NW-SERIES V882



THIS MAP COMPLIES WITH NATIONAL MAP ACCURACY STANDARDS
FOR SALE BY U.S. GEOLOGICAL SURVEY, P.O. BOX 25286, DENVER, COLORADO 80225
A FOLDER DESCRIBING TOPOGRAPHIC MAPS AND SYMBOLS IS AVAILABLE ON REQUEST