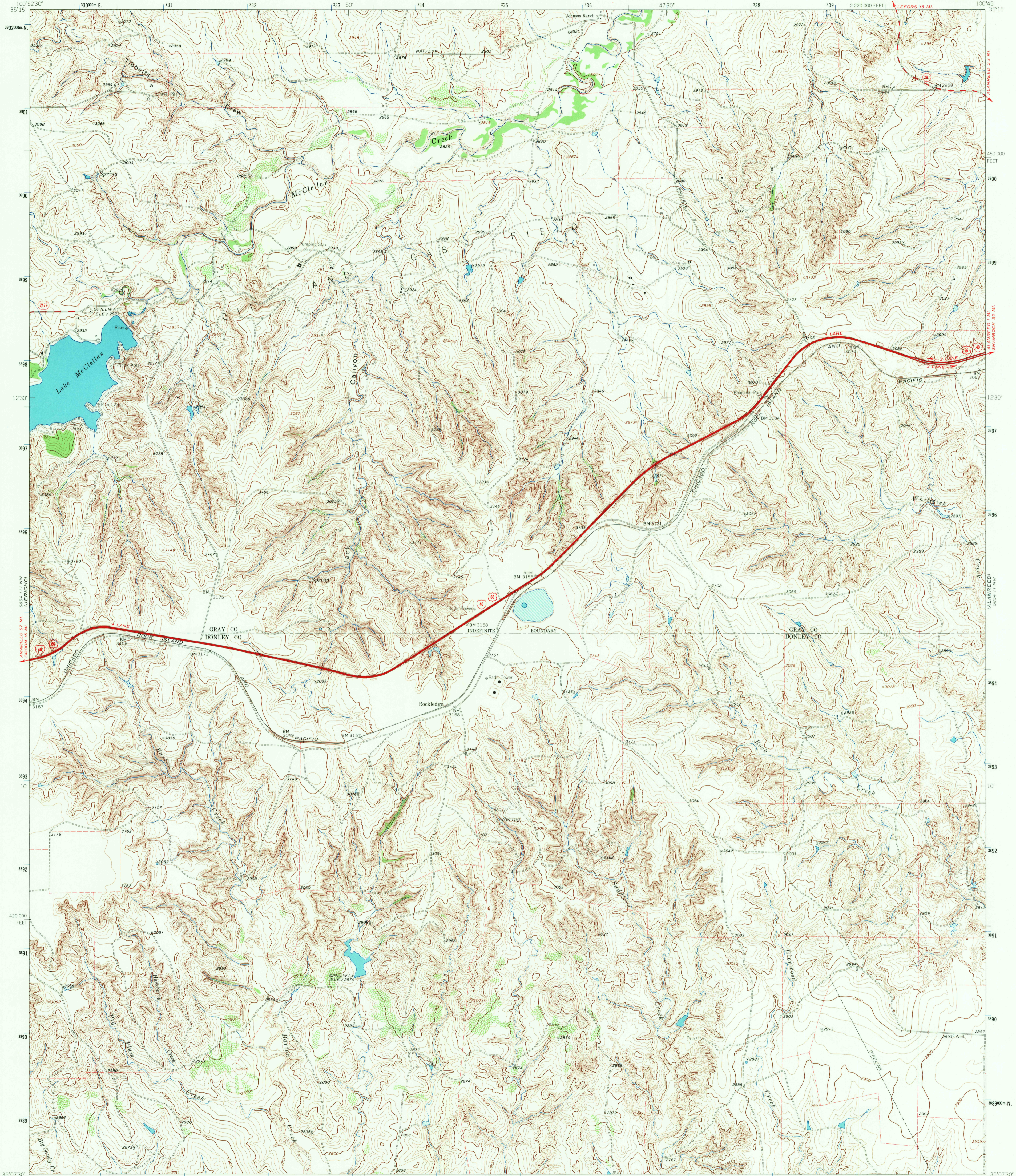


584 111 NW  
MUDDETS RANCH



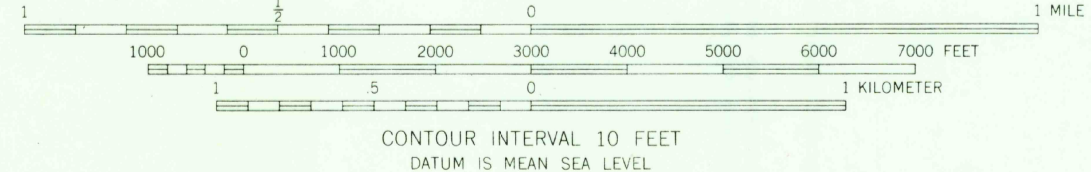
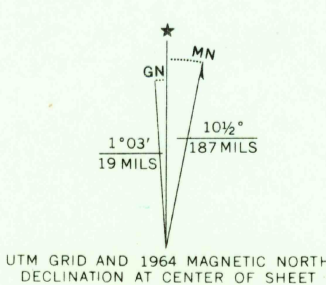
Mapped, edited, and published by the Geological Survey

Control by USGS and USC&GS

Topography by photogrammetric methods from aerial photographs taken 1962. Field checked 1964

Polyconic projection. 1927 North American datum 10,000-foot grid based on Texas coordinate system, north zone 1000 meter Universal Transverse Mercator grid ticks, zone 14, shown in blue

Fine red dashed lines indicate selected fence lines



THIS MAP COMPLIES WITH NATIONAL MAP ACCURACY STANDARDS  
FOR SALE BY U.S. GEOLOGICAL SURVEY, DENVER, COLORADO 80225, OR WASHINGTON, D. C. 20242  
A FOLDER DESCRIBING TOPOGRAPHIC MAPS AND SYMBOLS IS AVAILABLE ON REQUEST

ROAD CLASSIFICATION

Heavy duty	Light-duty
Medium-duty	Unimproved dirt
Interstate Route	U.S. Route
	State Route



U.S.G.S.  
FINE COPY  
TOPOGRAPHIC DIVISION

ROCKLEDGE, TEX.  
N35075-W10045/7.5  
1964

AMS 5854 111 NE-SERIES V882

3 225  
MAY 5 1967

584 111 NW  
MUDDETS RANCH

584 111 NW  
MUDDETS RANCH