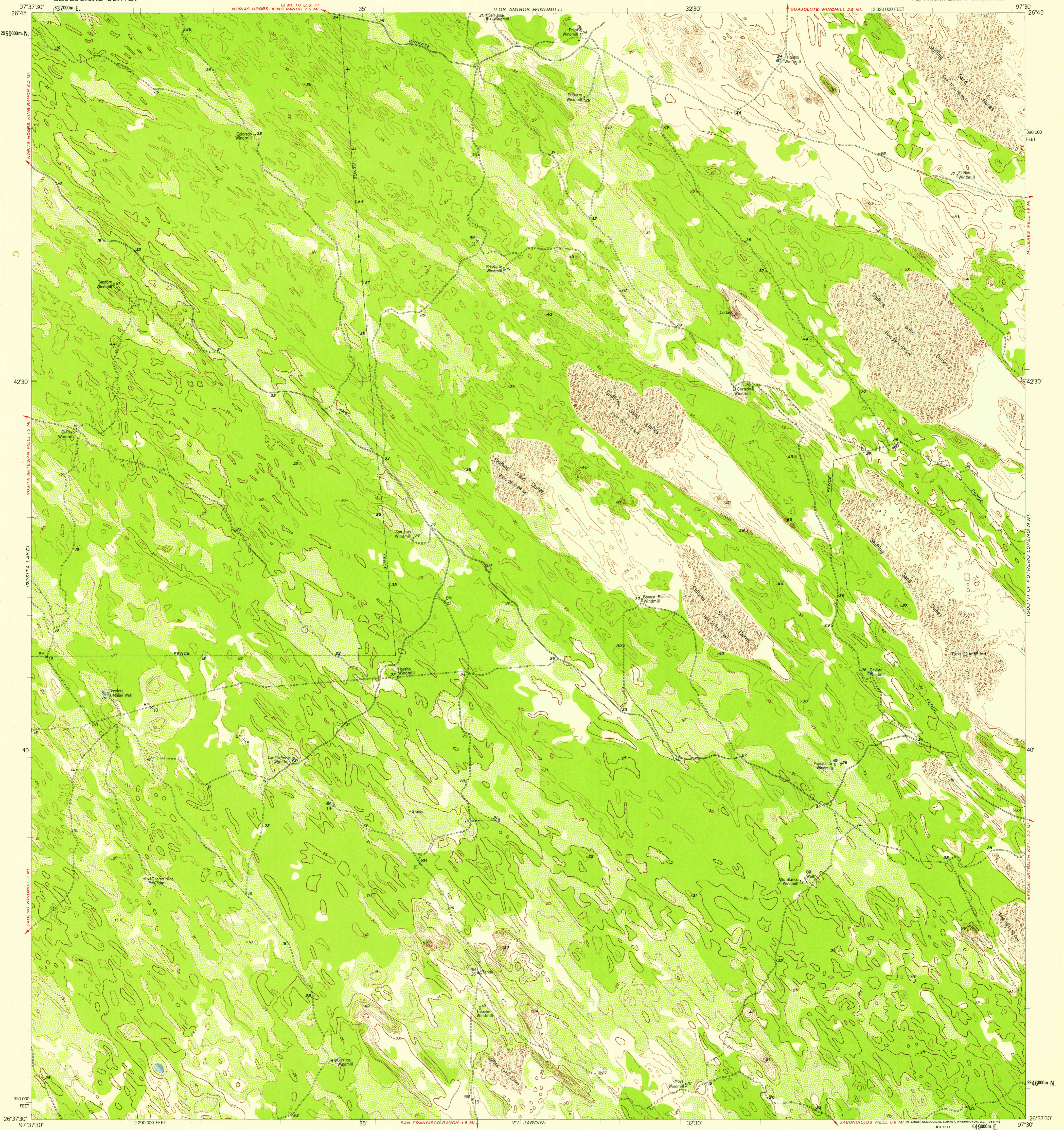
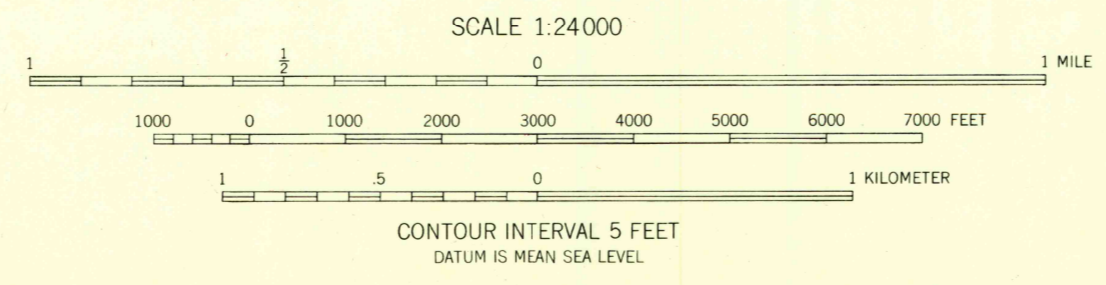
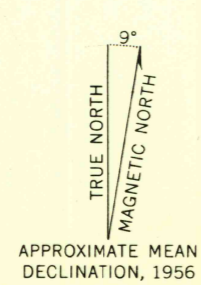


UNITED STATES
DEPARTMENT OF THE INTERIOR
GEOLOGICAL SURVEY

ROSITA LAKE NE QUADRANGLE
TEXAS-KENEDY CO.
7.5 MINUTE SERIES (TOPOGRAPHIC)
NE/4 ROSITA LAKE 15' QUADRANGLE



Mapped, edited, and published by the Geological Survey
Control by USGS and USC&GS
Culture and drainage in part compiled from aerial photographs
taken 1953. Topography by planetable surveys 1956
Polyconic projection. 1927 North American datum
10,000-foot grid based on Texas coordinate system,
south zone
1000-meter Universal Transverse Mercator grid ticks,
zone 14, shown in blue



ROAD CLASSIFICATION
Light-duty _____ Unimproved dirt _____

U.S.G.S.
FILE COPY
TOPOGRAPHIC DIVISION

ROSITA LAKE NE, TEX.
NE/4 ROSITA LAKE 15' QUADRANGLE
N2637.5-W9730/7.5

1956

THIS MAP COMPLIES WITH NATIONAL MAP ACCURACY STANDARDS
FOR SALE BY U.S. GEOLOGICAL SURVEY, DENVER 2, COLORADO OR WASHINGTON 25, D.C.
A FOLDER DESCRIBING TOPOGRAPHIC MAPS AND SYMBOLS IS AVAILABLE ON REQUEST

JUN 10 1958

1880