

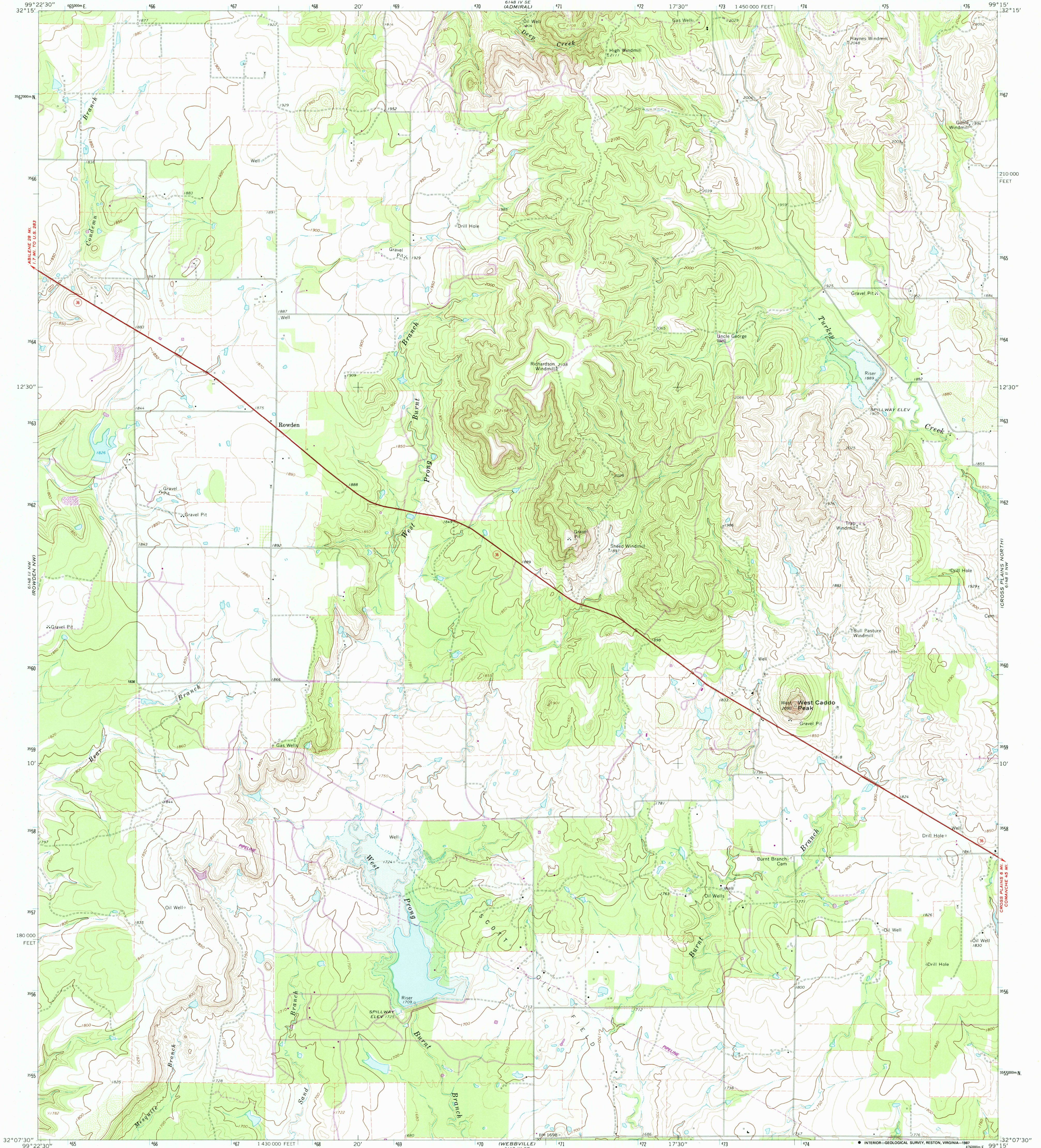
6148 III NW (ROWDEN NW)

6148 III SW (COMANCHE SW)

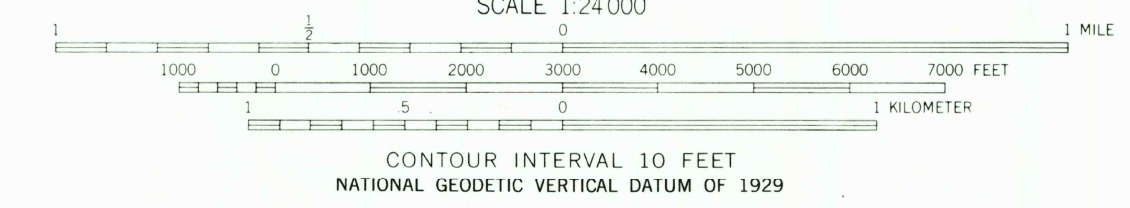
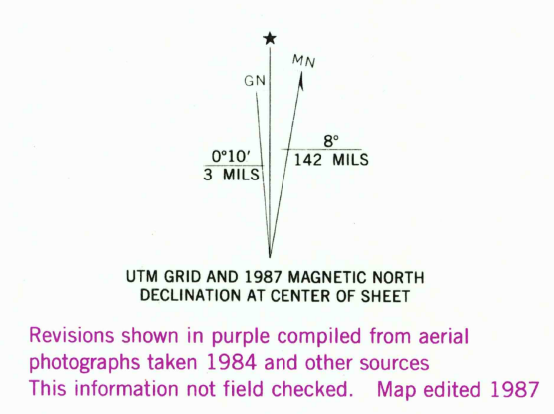
UNITED STATES DEPARTMENT OF THE INTERIOR GEOLOGICAL SURVEY

STATE OF TEXAS TEXAS WATER DEVELOPMENT BOARD

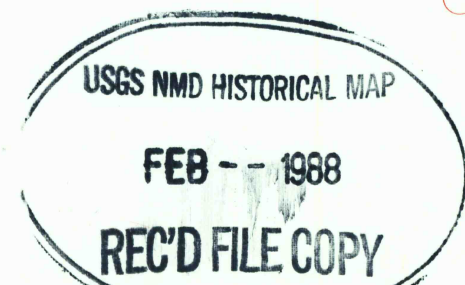
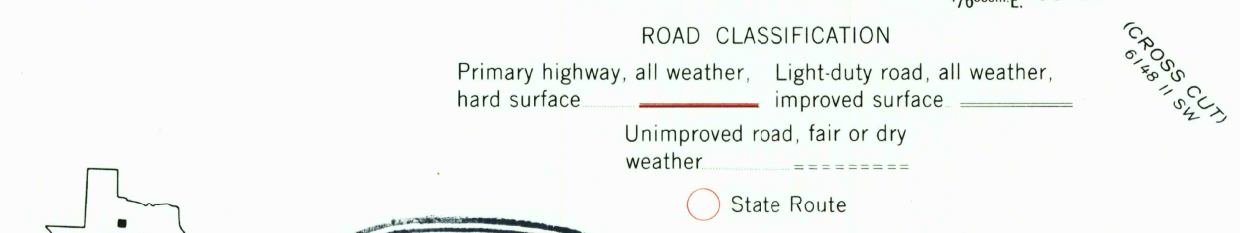
ROWDEN QUADRANGLE TEXAS-CALLAHAN CO 7.5 MINUTE SERIES (TOPOGRAPHIC)



Mapped, edited, and published by the Geological Survey Control by USGS and USC&GS Topography by photogrammetric methods from aerial photographs taken 1967. Field checked 1968 Polyconic projection. 1927 North American datum 10,000-foot grid based on Texas coordinate system, north central zone 1000-meter Universal Transverse Mercator grid ticks, zone 14, shown in blue Fine red dashed lines indicate selected fence lines Areas covered by dashed light-blue pattern are subject to controlled inundation To place on the predicted North American Datum 1983, move the projection lines 11 meters south and 35 meters east as shown by dashed corner ticks



SCALE 1:24,000 CONTOUR INTERVAL 10 FEET NATIONAL GEODETIC VERTICAL DATUM OF 1929 THIS MAP COMPLIES WITH NATIONAL MAP ACCURACY STANDARDS FOR SALE BY U. S. GEOLOGICAL SURVEY, DENVER, COLORADO 80225, OR RESTON, VIRGINIA 22092 A FOLDER DESCRIBING TOPOGRAPHIC MAPS AND SYMBOLS IS AVAILABLE ON REQUEST



ROWDEN, TEX. 32099-B3-TF-024 1968 PHOTOREVISED 1987 DMA 6148 III NE-SERIES V882