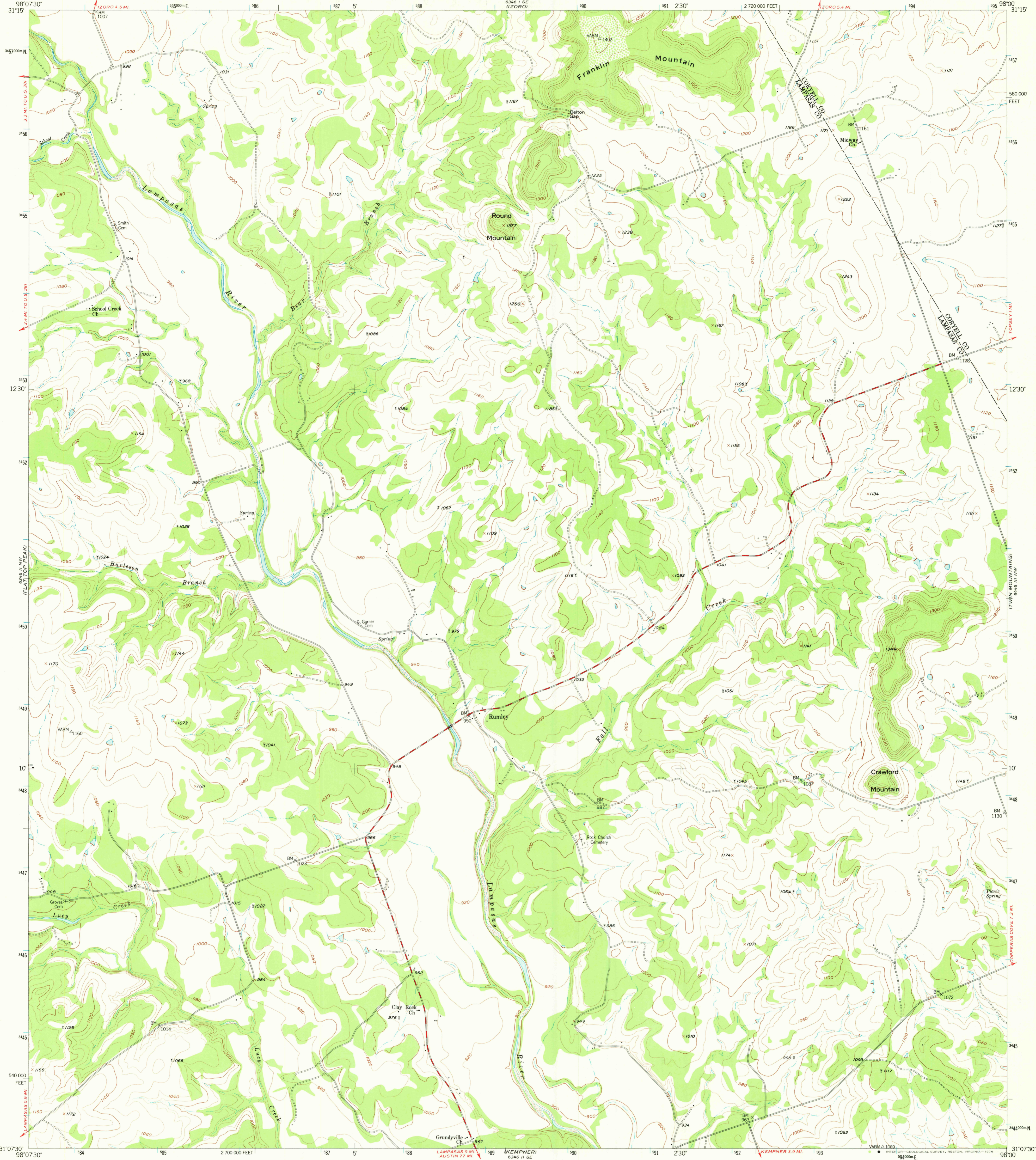


ADAMSVILLE

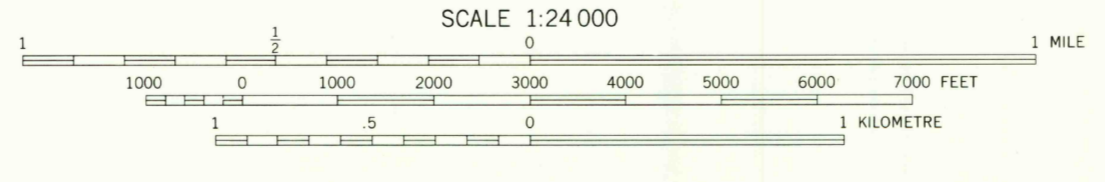
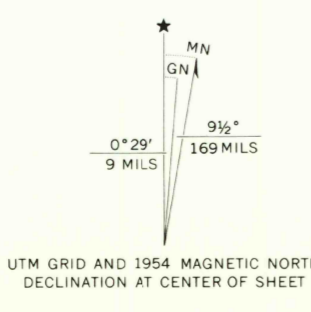
ADAMSVILLE

UNITED STATES
DEPARTMENT OF THE INTERIOR
GEOLOGICAL SURVEY

RUMLEY QUADRANGLE
TEXAS
7.5 MINUTE SERIES (TOPOGRAPHIC)
NE/4 LAMPASAS 15' QUADRANGLE



Mapped, edited, and published by the Geological Survey
Control by USGS and USC&GS
Topography from aerial photographs by multiplex methods
Aerial photographs taken 1953. Field check 1954
Polyconic projection. 1927 North American datum
10,000-foot grid based on Texas coordinate system,
central zone
1000-metre Universal Transverse Mercator grid ticks,
zone 14, shown in blue



CONTOUR INTERVAL 20 FEET
NATIONAL GEODETIC VERTICAL DATUM OF 1929

THIS MAP COMPLIES WITH NATIONAL MAP ACCURACY STANDARDS
FOR SALE BY U. S. GEOLOGICAL SURVEY, DENVER, COLORADO 80225, OR RESTON, VIRGINIA 22092
A FOLDER DESCRIBING TOPOGRAPHIC MAPS AND SYMBOLS IS AVAILABLE ON REQUEST



QUADRANGLE LOCATION

ROAD CLASSIFICATION
Medium-duty ——— Light-duty ———
Unimproved dirt = = = = =

RUMLEY, TEX.
NE/4 LAMPASAS 15' QUADRANGLE
N3107.5-W9800/7.5

1954
AMS 6346 II NE-SERIES V882

USGS
Historical File
Topographic Division

JUL 0 1954