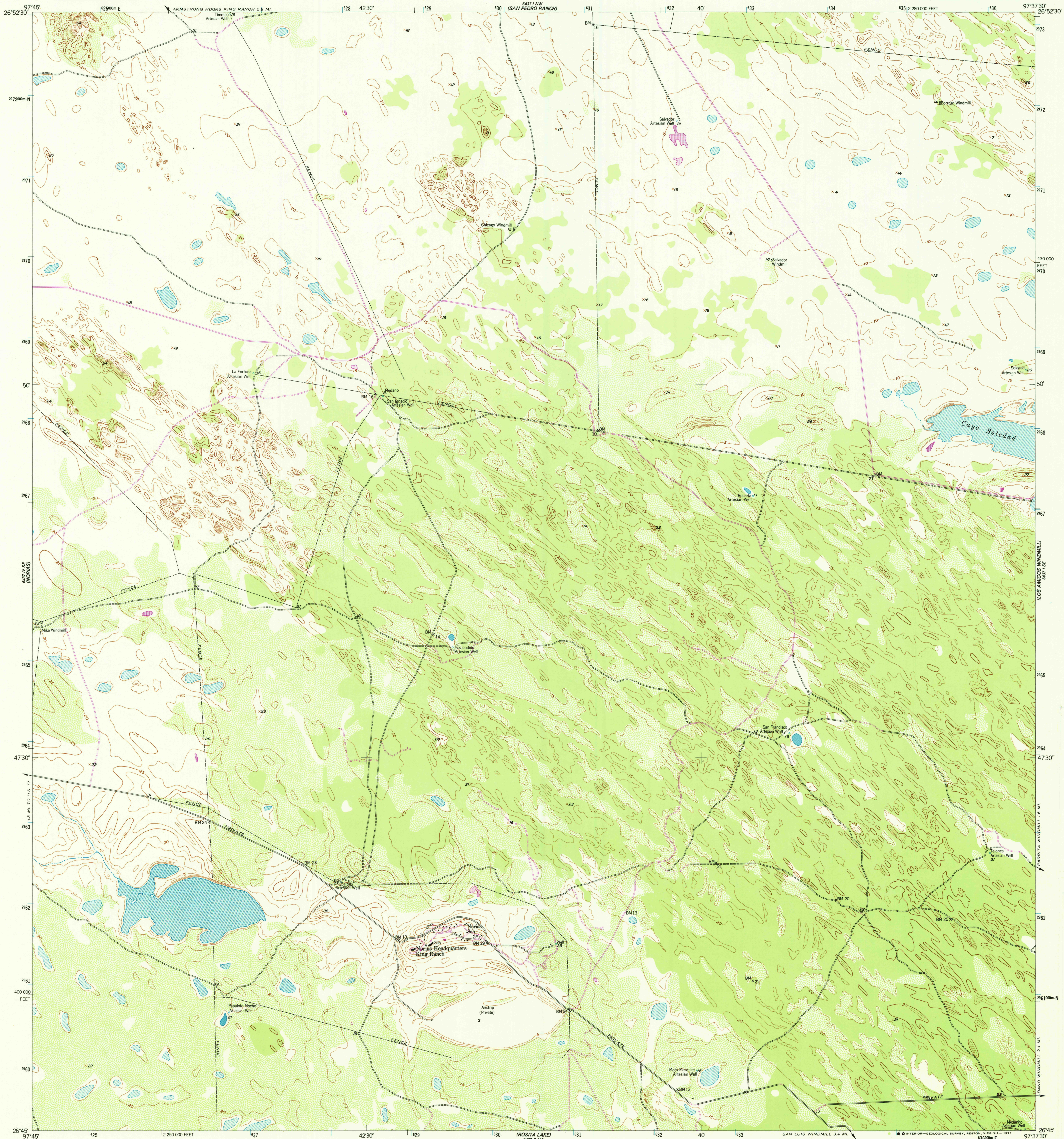


6437 1/4 NE (MARI ESTRELLA)

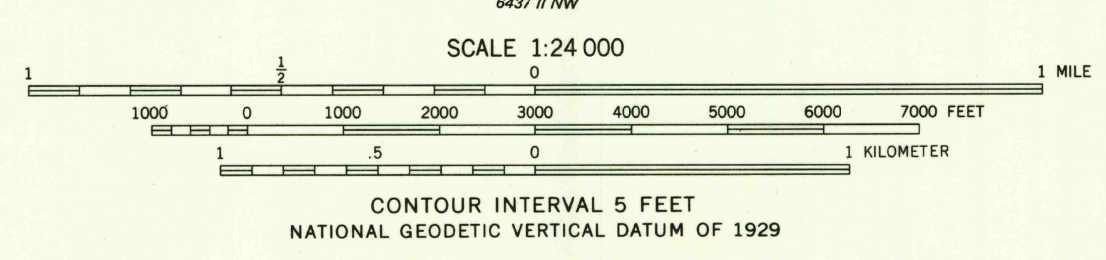
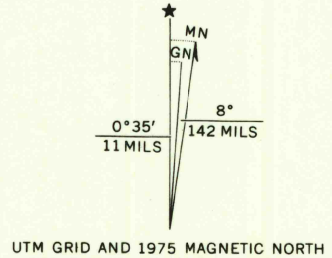
6437 1/4 NE (MARI ESTRELLA)

UNITED STATES
DEPARTMENT OF THE INTERIOR
GEOLOGICAL SURVEY

SALTILLO WELL QUADRANGLE
TEXAS-KENEDY CO
7.5 MINUTE SERIES (TOPOGRAPHIC)
SW/4 SALTILLO RANCH 15' QUADRANGLE



Mapped, edited, and published by the Geological Survey
Control by USGS and NOS/NOAA
Culture and drainage in part compiled from aerial photographs
taken 1953. Topography by planetable surveys 1956
Polycyclic projection. 1927 North American datum
10,000-foot grid based on Texas coordinate system,
south zone
1000-meter Universal Transverse Mercator grid ticks,
zone 14, shown in blue
Revisions shown in purple compiled from aerial photographs
taken 1975. This information not field checked



ROAD CLASSIFICATION
Light-duty ————— Unimproved dirt - - - - -

THIS MAP COMPLIES WITH NATIONAL MAP ACCURACY STANDARDS
FOR SALE BY U. S. GEOLOGICAL SURVEY, DENVER, COLORADO 80225, OR RESTON, VIRGINIA 22092
A FOLDER DESCRIBING TOPOGRAPHIC MAPS AND SYMBOLS IS AVAILABLE ON REQUEST

2697-342

USGS
Historical File
Topographic Division

DEC 2 1 1971
SALTILLO WELL, TEX.
SW/4 SALTILLO RANCH 15' QUADRANGLE
N2645-W9737.5/7.5

1956
PHOTOREVISED 1975
AMS 6437 1 SW-SERIES V882

2800