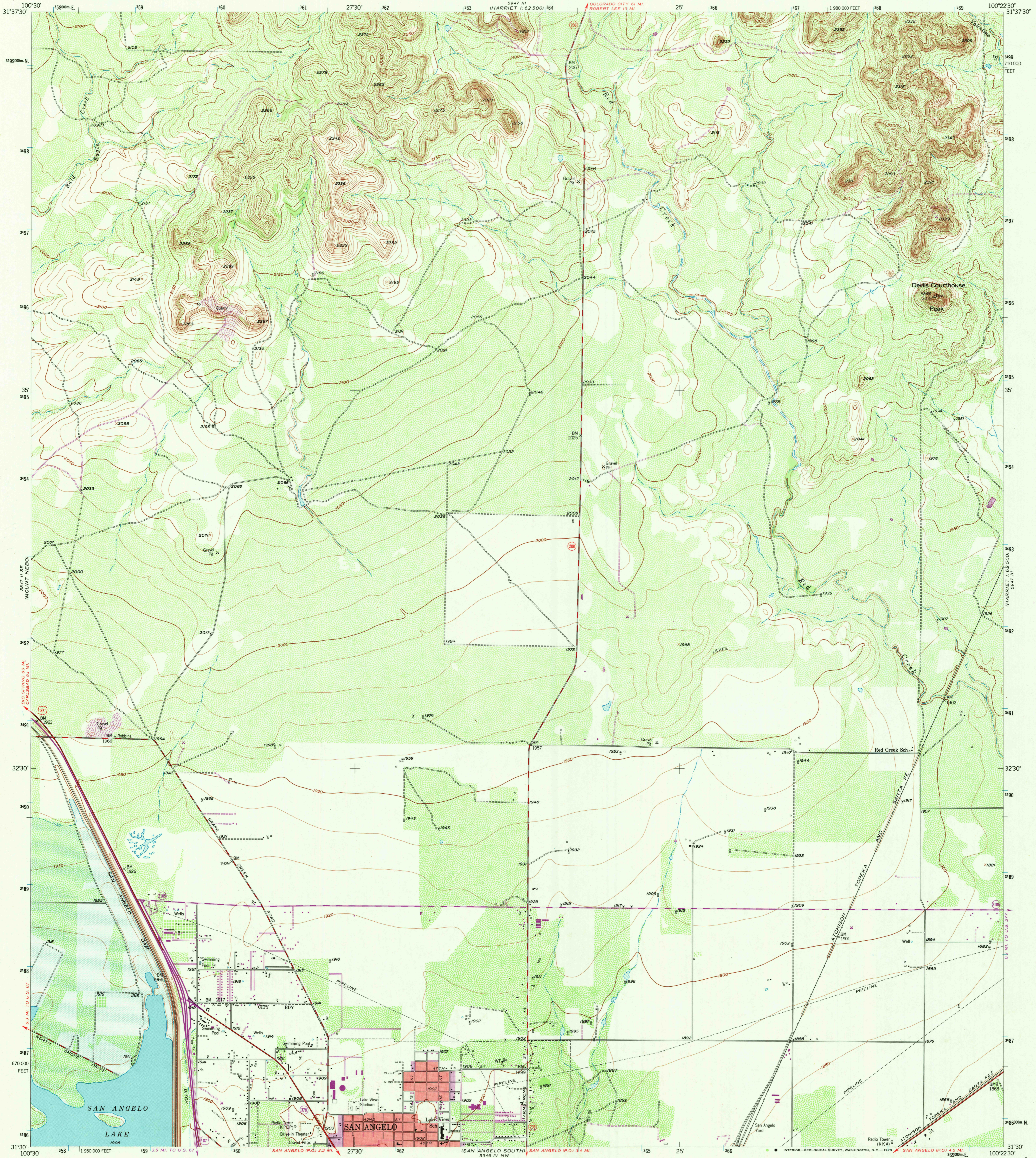


894 111
144484271
1:62,500

SAN ANGELO NORTH QUADRANGLE
TEXAS-TOM GREEN CO.
7.5 MINUTE SERIES (TOPOGRAPHIC)
SW/4 HARRIET 15 QUADRANGLE

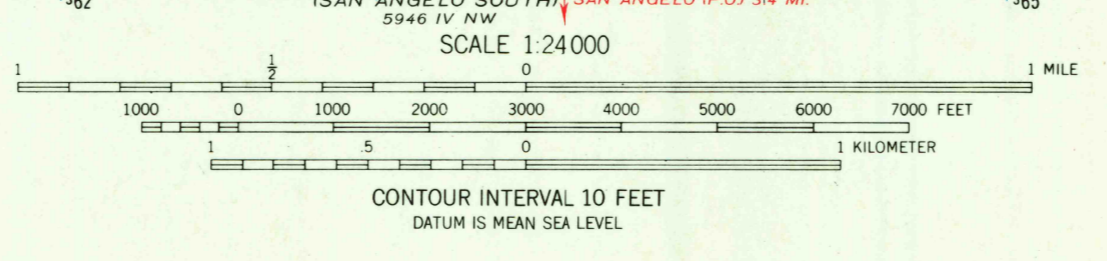
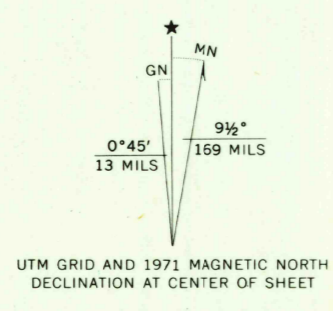
894 111
144484271
1:62,500

UNITED STATES
DEPARTMENT OF THE INTERIOR
GEOLOGICAL SURVEY



17 W/4 BUTTES
894 111
1:62,500

Mapped, edited, and published by the Geological Survey
Control by USGS, USC&GS, and USCE
Topography from aerial photographs by ER-55 plotter
and by planetable surveys 1957. Aerial photographs taken 1954
Polyconic projection. 1927 North American datum
10,000-foot grid based on Texas coordinate system,
central zone
1000-meter Universal Transverse Mercator grid ticks,
zone 14, shown in blue
Red tint indicates areas in which only landmark buildings are shown
Areas covered by dashed light-blue pattern are subject to
controlled inundation
Revisions shown in purple compiled from aerial photographs
taken 1971. This information not field checked
Purple tint indicates extension of urban areas



ROAD CLASSIFICATION

Heavy-duty	Light-duty
Medium-duty	Unimproved dirt
U.S. Route	State Route

USGS
Historical File
Topographic Division

SAN ANGELO NORTH, TEX.
SW/4 HARRIET 15 QUADRANGLE
N3130-W10022.5/7.5
1957
PHOTOREVISED 1971
AMS 5947 111 SW - SERIES V882

THIS MAP COMPLIES WITH NATIONAL MAP ACCURACY STANDARDS
FOR SALE BY U.S. GEOLOGICAL SURVEY, DENVER, COLORADO 80225, OR WASHINGTON, D. C. 20242
A FOLDER DESCRIBING TOPOGRAPHIC MAPS AND SYMBOLS IS AVAILABLE ON REQUEST

SEP 11 1973