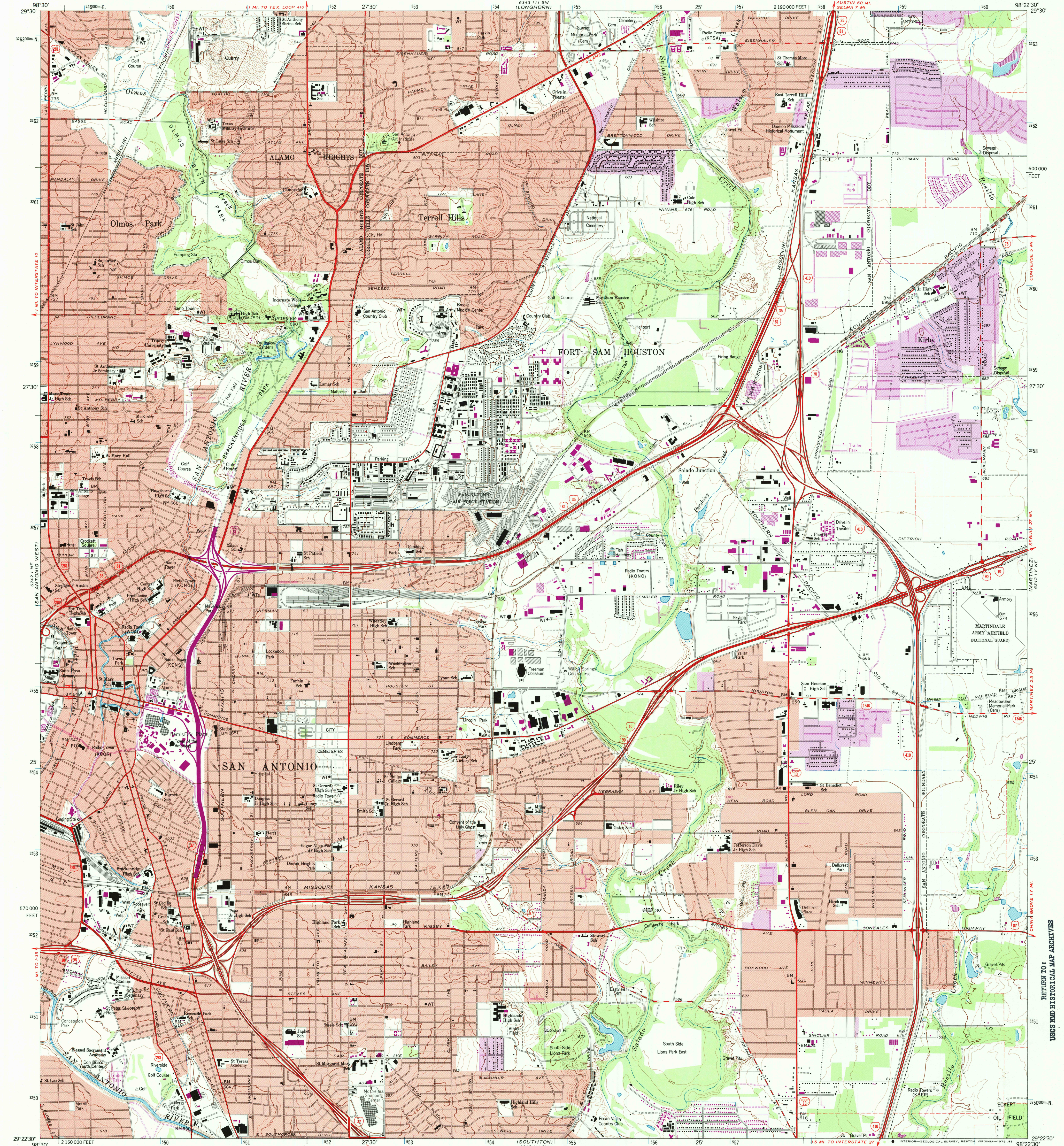


UNITED STATES  
DEPARTMENT OF THE INTERIOR  
GEOLOGICAL SURVEY

SAN ANTONIO EAST QUADRANGLE  
TEXAS-BEXAR CO.  
7.5 MINUTE SERIES TOPOGRAPHIC



Mapped by the Army Map Service  
Edited and published by the Geological Survey  
Control by USGS, NOS/NOAA, and USCE  
Topography by photogrammetric methods from aerial photographs  
taken 1952. Field annotated 1953. Revised by Geological Survey  
from aerial photographs taken 1966. Field checked 1967.  
Polyconic projection. 1927 North American datum  
10,000-foot grid based on Texas coordinate system,  
south central zone  
1000-metre Universal Transverse Mercator grid ticks,  
zone 14, shown in blue  
Red tint indicates areas in which only landmark buildings are shown  
Fine red dashed lines indicate selected fence lines  
Revisions shown in purple compiled by the Geological Survey from  
aerial photographs taken 1973. This information not field checked

Purple tint indicates extension of urban areas

SCALE 1:24 000  
1 000 2000 3000 4000 5000 6000 7000 FEET  
1 5 10 20 30 40 50 60 70 80 90 100 METERS  
CONTOUR INTERVAL 10 FEET  
NATIONAL GEODETIC VERTICAL DATUM OF 1929



ROAD CLASSIFICATION  
Primary highway, hard surface  
Secondary highway, hard surface  
Unimproved road  
Interstate Route  
U.S. Route  
State Route

SAN ANTONIO EAST, TEX.  
N2922.5-W9822.5/7.5

1967  
PHOTOREVISED 1973  
AMS 6342 IV NW-SERIES V882

USGS Library  
Reston, VA.  
Topo Archive