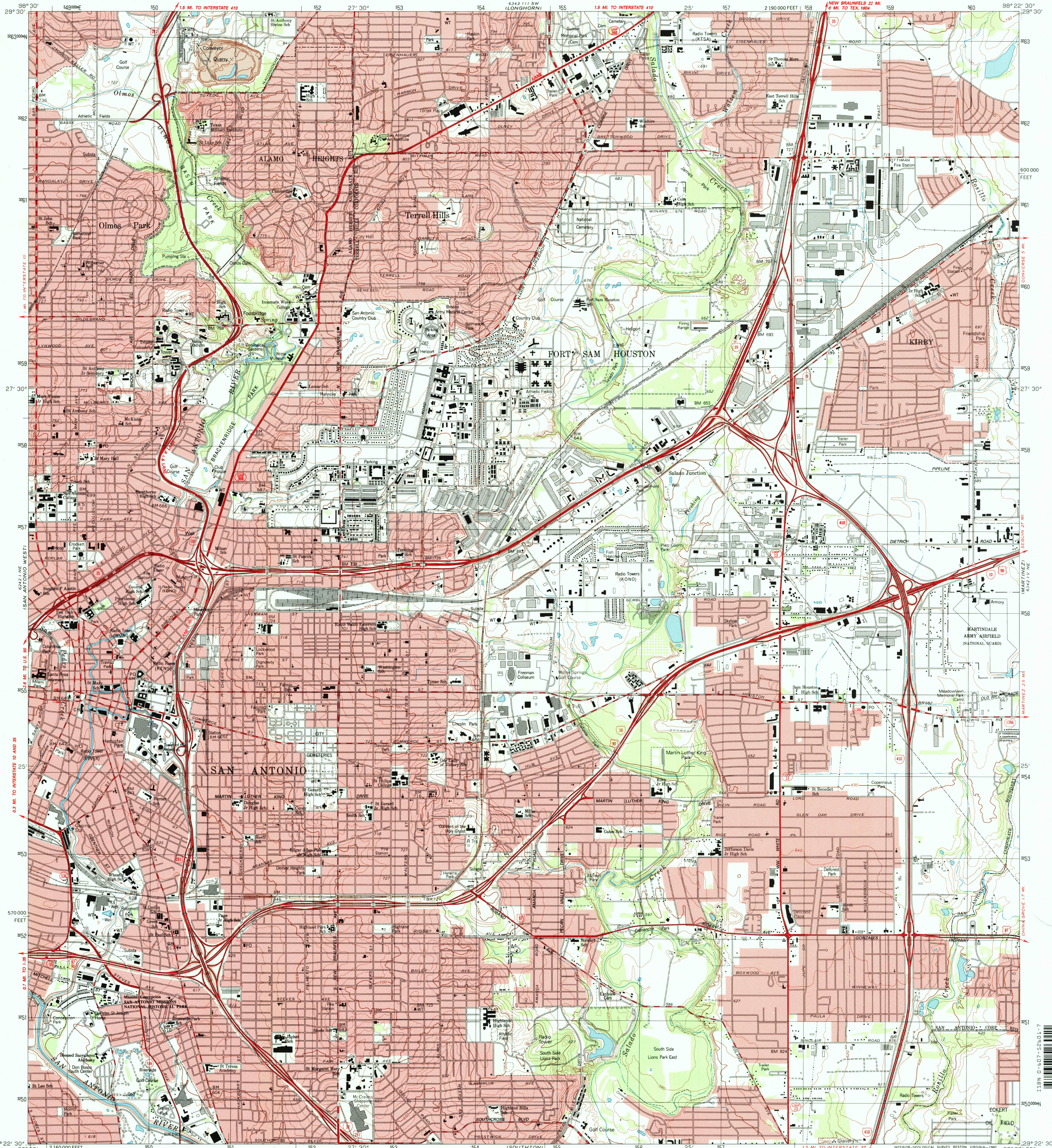
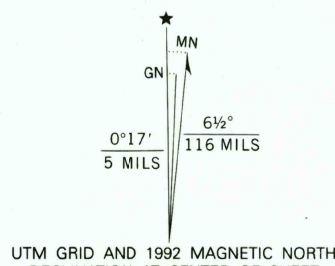


UNITED STATES
DEPARTMENT OF THE INTERIOR
GEOLOGICAL SURVEY

SAN ANTONIO EAST QUADRANGLE
TEXAS-BEXAR CO.
7.5 MINUTE SERIES TOPOGRAPHIC



Produced by the United States Geological Survey
Control by USGS, NOS/NOAA and USCE
Compiled by Defense Mapping Agency from aerial photographs
taken 1952. Revised from aerial photographs taken 1986
and other source data. Field checked 1987. Map edited 1992
North American Datum of 1927 (NAD 27). Projection and
10 000-foot grid ticks: Texas Coordinate System,
south central zone (Lambert Conformal Conic)
1000-meter Universal Transverse Mercator grid, zone 14
The difference between NAD 27 and North American Datum of
1983 (NAD 83) for 7.5 minute intersections is given in USGS
Bulletin 1875. The NAD 83 is shown by dashed corner ticks
There may be private inholdings within the boundaries of the
National or State reservations shown on this map
Red tint indicates areas in which only landmark buildings are shown



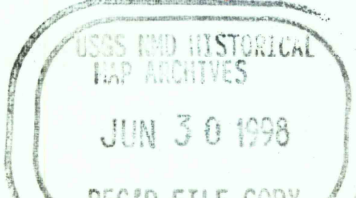
CONTOUR INTERVAL 10 FEET
NATIONAL GEODETIC VERTICAL DATUM OF 1929

THIS MAP COMPLIES WITH NATIONAL MAP ACCURACY STANDARDS
FOR SALE BY U.S. GEOLOGICAL SURVEY, P.O. BOX 25286, DENVER, COLORADO 80225
A FOLDER DESCRIBING TOPOGRAPHIC MAPS AND SYMBOLS IS AVAILABLE ON REQUEST



2998-133

ROAD CLASSIFICATION
Primary highway, hard surface
Secondary highway, hard surface
Unimproved road
Interstate Route
U. S. Route
State Route



SAN ANTONIO EAST, TEX. 72
29098-D4-TT-024

1992
DMA 6342 IV NW-SERIES V882