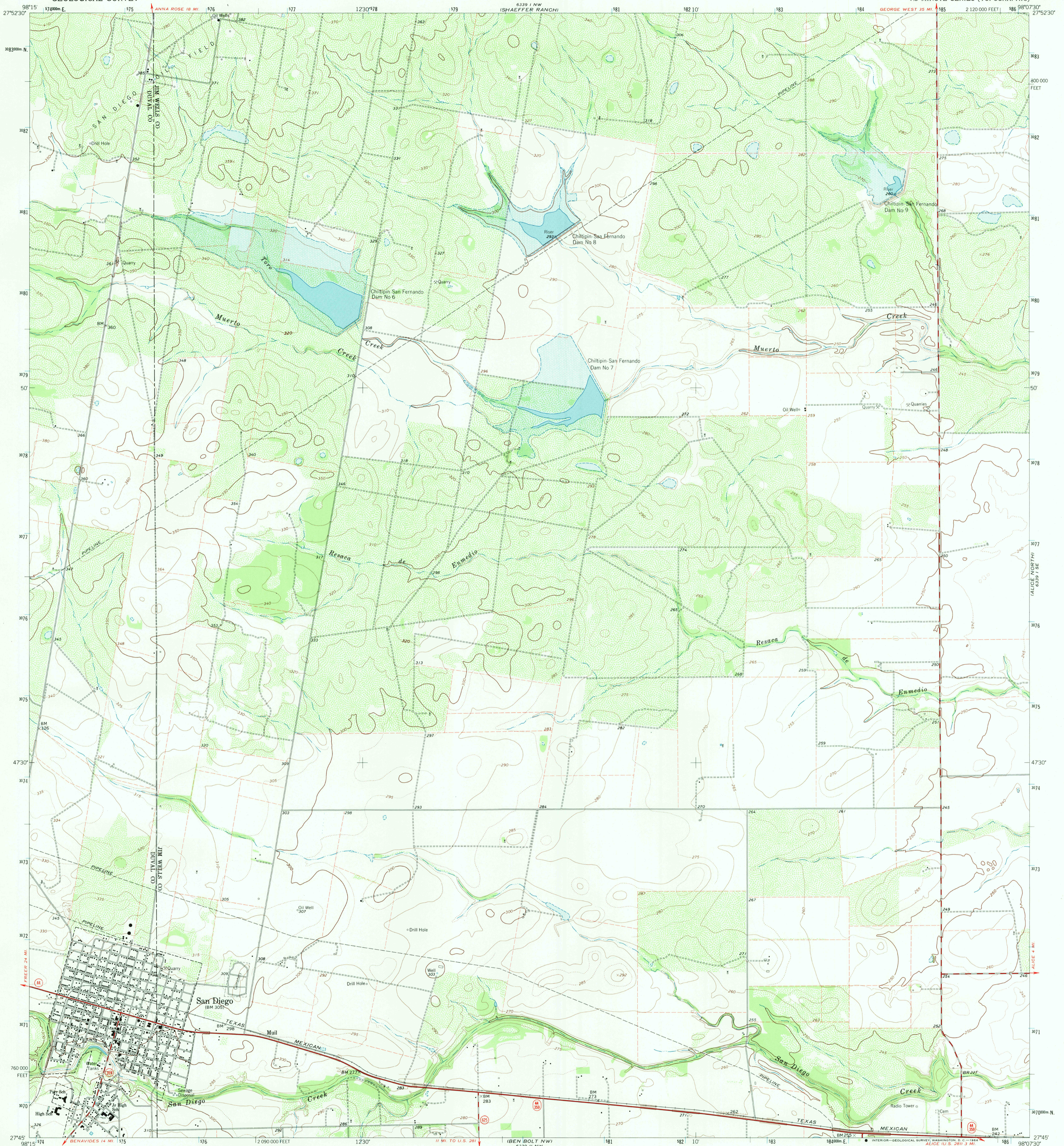
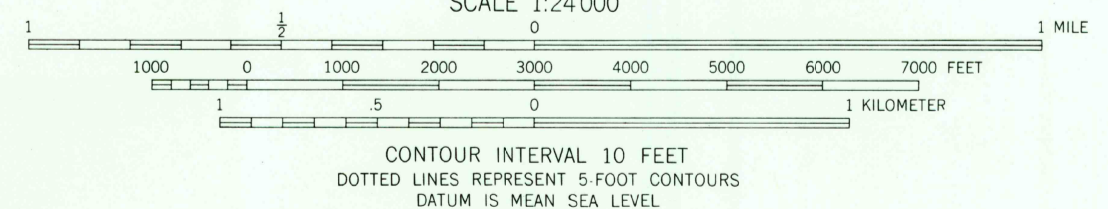
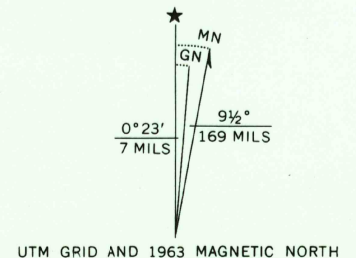


6339 1 NW
(SAN DIEGO NE)



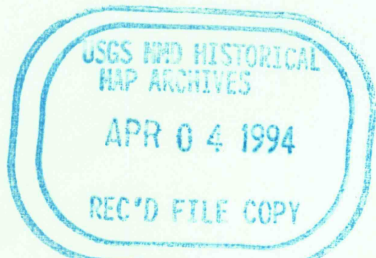
Mapped, edited, and published by the Geological Survey

Control by USGS and USC&GS
Topography by photogrammetric methods from aerial photographs taken 1961-1962. Field checked 1963.
Polyconic projection. 1927 North American datum. 10,000-foot grid based on Texas coordinate system, south zone. 1000-meter Universal Transverse Mercator grid ticks, zone 14, shown in blue.
Fine red dashed lines indicate selected fence lines.
Areas covered by dashed light blue pattern are subject to controlled inundation.



CONTOUR INTERVAL 10 FEET
DOTTED LINES REPRESENT 5 FOOT CONTOURS
DATUM IS MEAN SEA LEVEL

THIS MAP COMPLIES WITH NATIONAL MAP ACCURACY STANDARDS
FOR SALE BY U.S. GEOLOGICAL SURVEY
DENVER, COLORADO 80225, OR RESTON, VIRGINIA 22092
A FOLDER DESCRIBING TOPOGRAPHIC MAPS AND SYMBOLS IS AVAILABLE ON REQUEST



ROAD CLASSIFICATION
Heavy-duty ——— Light-duty ———
Medium-duty ——— Unimproved dirt ———
State Route ○

SAN DIEGO, TEX.
N2745-W9807.5/7.5

1963
AMS 6339 1 SW - SERIES V882

ALICE NORTH
ALICE SOUTH
ALICE WEST
ALICE EAST