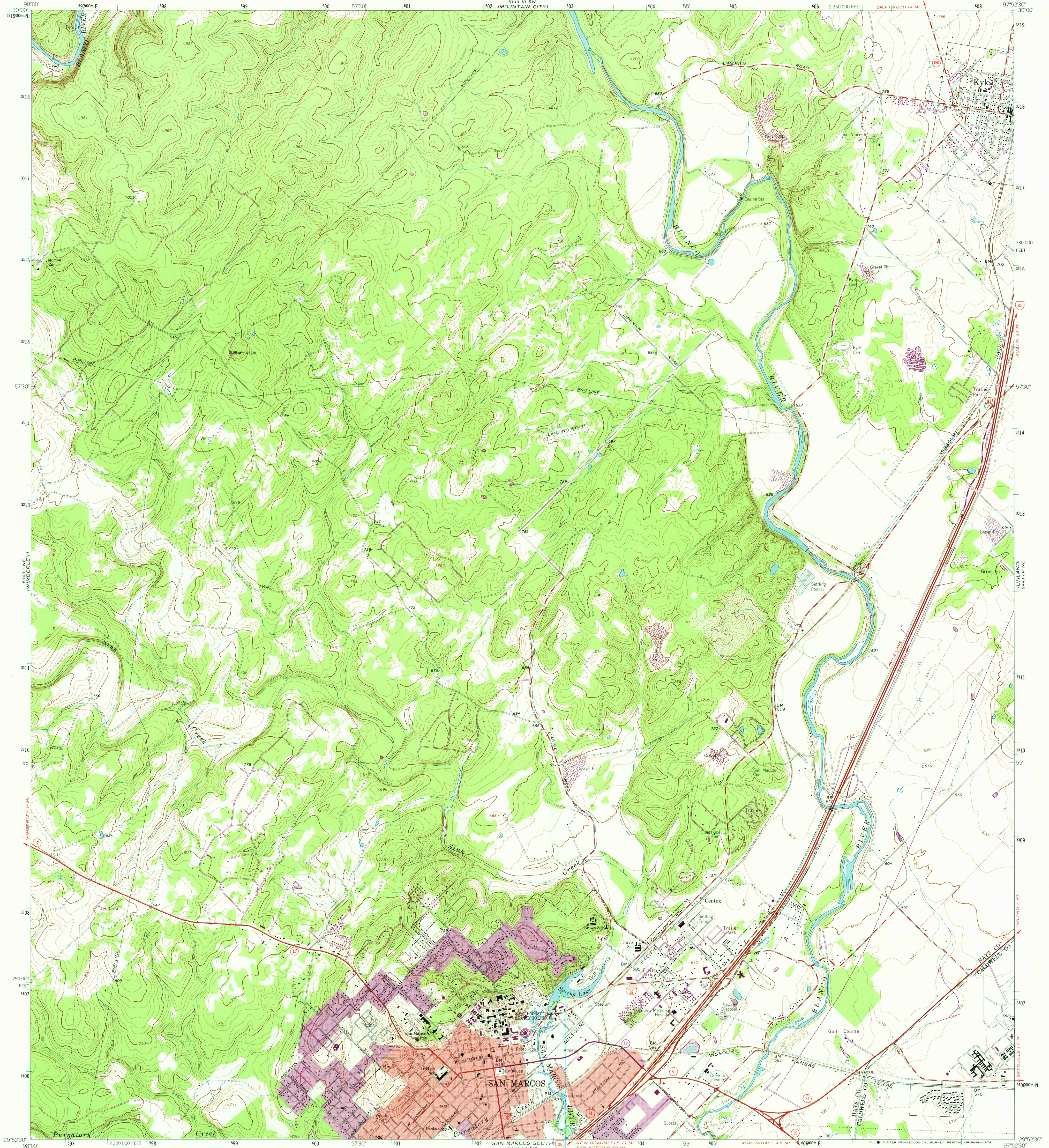
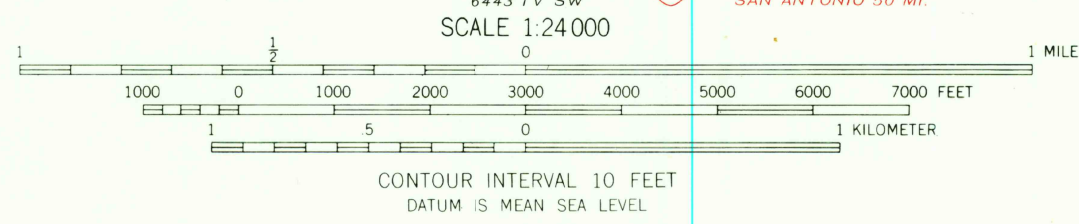
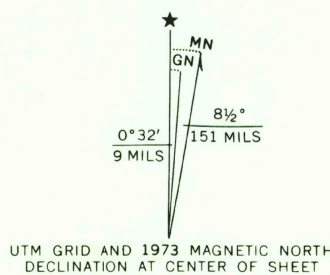


UNITED STATES  
DEPARTMENT OF THE INTERIOR  
GEOLOGICAL SURVEY

SAN MARCOS NORTH QUADRANGLE  
TEXAS  
7.5 MINUTE SERIES (TOPOGRAPHIC)



Mapped by the Army Map Service  
Edited and published by the Geological Survey  
Control by USGS, USC&GS, and USCE  
Topography by photogrammetric methods from aerial  
photographs taken 1958. Field checked by USGS 1964  
Polyconic projection. 1927 North American datum  
10,000-foot grid based on Texas coordinate system, south central zone  
1000-meter Universal Transverse Mercator grid ticks,  
zone 14, shown in blue  
Red tint indicates area in which only landmark buildings are shown  
Fine red dashed lines indicate selected fence lines  
Revisions shown in purple compiled by the Geological Survey from  
aerial photographs taken 1973. This information not field checked  
Purple tint indicates extension of urban areas



THIS MAP COMPLIES WITH NATIONAL MAP ACCURACY STANDARDS  
FOR SALE BY U.S. GEOLOGICAL SURVEY, DENVER, COLORADO 80225, OR RESTON, VIRGINIA 22092  
A FOLDER DESCRIBING TOPOGRAPHIC MAPS AND SYMBOLS IS AVAILABLE ON REQUEST

ROAD CLASSIFICATION  
Primary highway, hard surface  
Secondary highway, hard surface  
Light-duty road, hard or improved surface  
Unimproved road  
Interstate Route  
U.S. Route  
State Route



SAN MARCOS NORTH, TEX.  
N2952.5-W9752.5/7.5

USGS  
Historical File  
Topographic Division

1964  
PHOTOREVISED 1973  
AMS 6443 IV NW-SERIES V882

APR 8 1975

2100