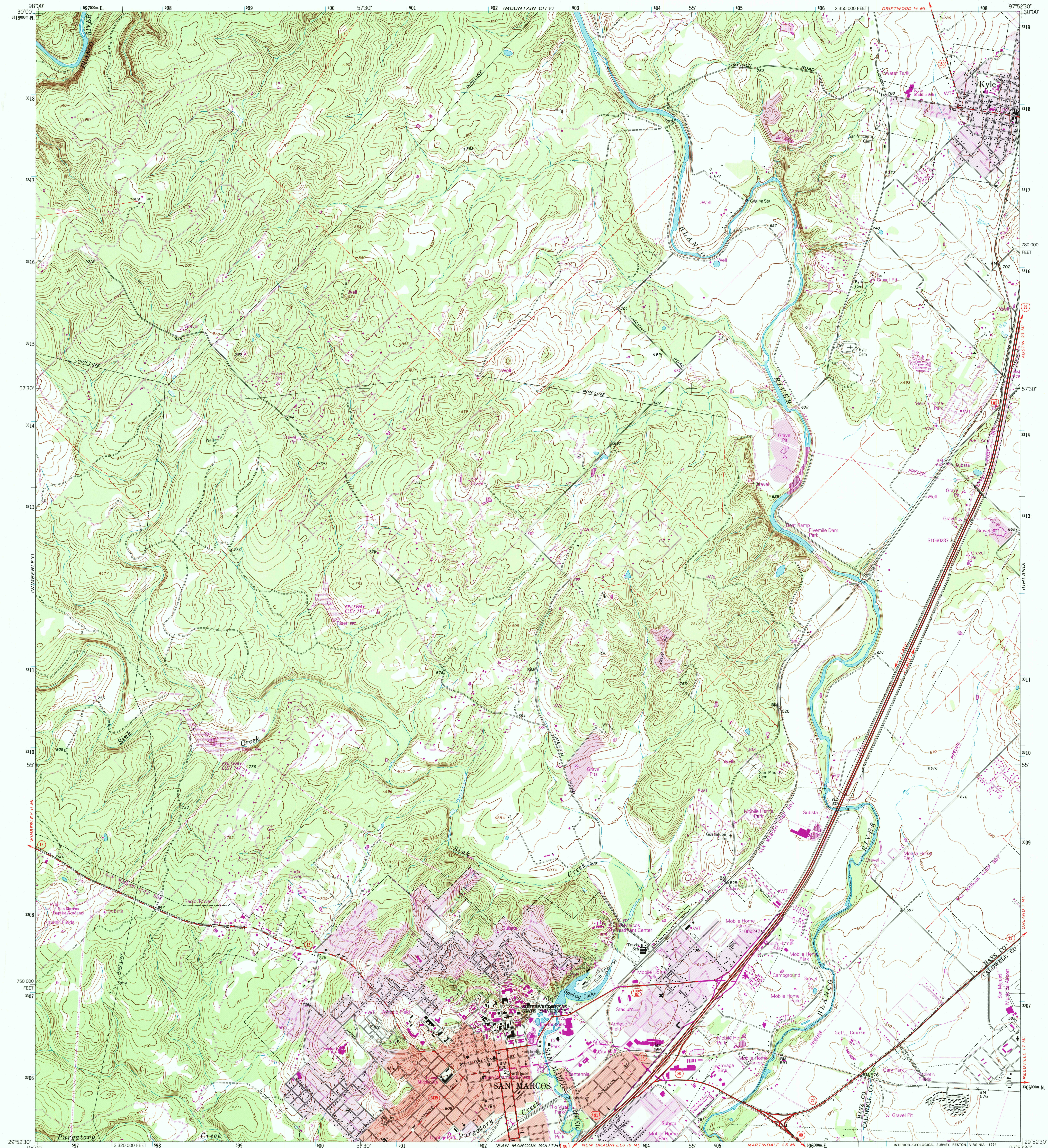
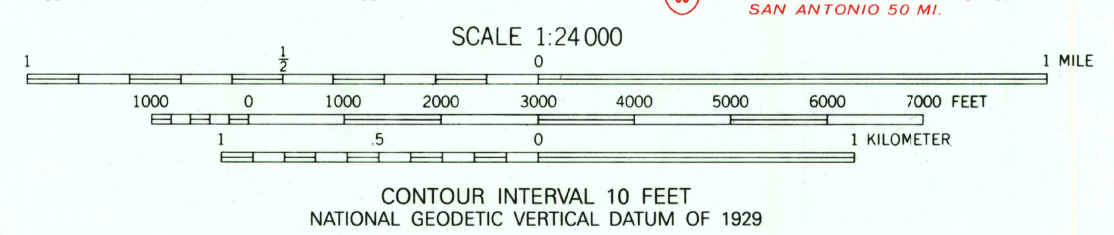
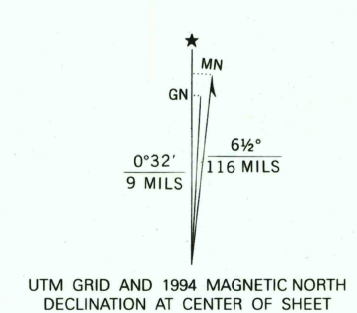


UNITED STATES  
DEPARTMENT OF THE INTERIOR  
GEOLOGICAL SURVEY

SAN MARCOS NORTH QUADRANGLE  
TEXAS  
7.5 MINUTE SERIES (TOPOGRAPHIC)

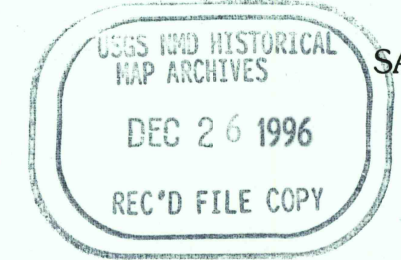


Produced by the United States Geological Survey  
Control by USGS, NOS/NOAA and Texas Department of  
Highways & Public Transportation  
Compiled from aerial photographs taken 1958. Revisions shown  
in purple and woodland compiled from aerial photographs taken  
1986 and other sources and have been field checked.  
Map edited 1994. Conflicts may exist between some updated  
features and previously mapped contours.  
North American Datum of 1927 (NAD 27). Projection and  
10,000-foot ticks: Texas Coordinate System, south central zone  
(Lambert Conformal Conic).  
Blue 1000-meter Universal Transverse Mercator ticks, zone 14  
North American Datum of 1983 (NAD 83) is shown by dashed  
corner ticks. The values of the shift between NAD 27 and NAD 83  
for 7.5-minute intersections are obtainable from National Geodetic  
Survey NADCON software.  
Areas covered by dashed light-blue pattern are subject to  
controlled inundation.



ROAD CLASSIFICATION	
Primary highway, hard surface	Light-duty road, hard or improved surface
Secondary highway, hard surface	Unimproved road
Interstate Route	U. S. Route
State Route	

THIS MAP COMPLIES WITH NATIONAL MAP ACCURACY STANDARDS  
FOR SALE BY U.S. GEOLOGICAL SURVEY, P.O. BOX 25286, DENVER, COLORADO 80225  
A FOLDER DESCRIBING TOPOGRAPHIC MAPS AND SYMBOLS IS AVAILABLE ON REQUEST



SAN MARCOS NORTH, TEX  
29097-H8-TF-024  
1964  
REVISED 1994  
DMA 6443 IV NW-SERIES V882

