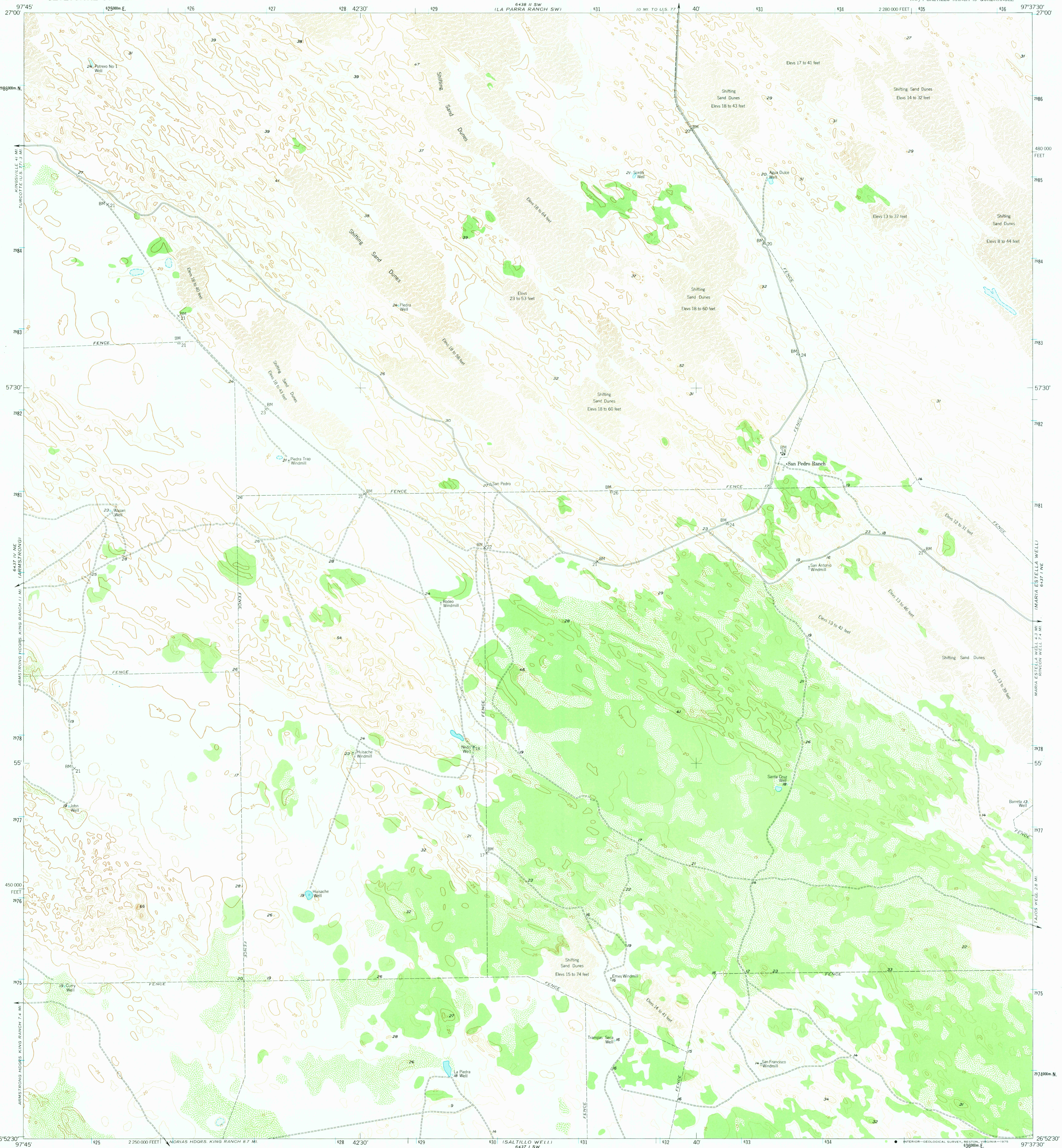


6437 1/4 SE  
1 2 3 4 5 6 7 8 9 10 11 12

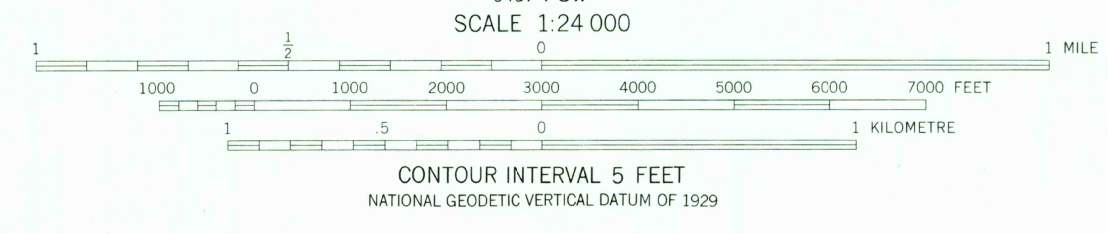
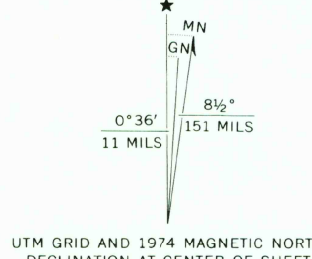
UNITED STATES  
DEPARTMENT OF THE INTERIOR  
GEOLOGICAL SURVEY

SAN PEDRO RANCH QUADRANGLE  
TEXAS-KENEDY CO.  
7.5 MINUTE SERIES (TOPOGRAPHIC)  
NW 1/4 SALTILLO RANCH 15 QUADRANGLE

6438 1/4 SE  
(SARITA) 1 2 3 4 5 6 7 8 9 10 11 12



Mapped, edited, and published by the Geological Survey  
Control by USGS and NOS/NOAA  
Culture and drainage in part compiled from aerial photographs taken 1953. Topography by planetable surveys 1956  
Polyconic projection. 1927 North American datum  
10,000-foot grid based on Texas coordinate system, south zone  
1000-metre Universal Transverse Mercator grid ticks, zone 14, shown in blue



ROAD CLASSIFICATION  
Light-duty ——— Unimproved dirt - - - - -

THIS MAP COMPLIES WITH NATIONAL MAP ACCURACY STANDARDS  
FOR SALE BY U. S. GEOLOGICAL SURVEY, DENVER, COLORADO 80225, OR RESTON, VIRGINIA 22092  
A FOLDER DESCRIBING TOPOGRAPHIC MAPS AND SYMBOLS IS AVAILABLE ON REQUEST

USGS  
HISTORICAL FILE  
TOPOGRAPHIC DIVISION

SAN PEDRO RANCH, TEX.  
NW 1/4 SALTILLO RANCH 15 QUADRANGLE  
N2652.5—W9737.5/7.5

1956  
MINOR REVISIONS 1974  
AMS 6437 1 NW - SERIES V882

1550  
JUN 1 8 1975