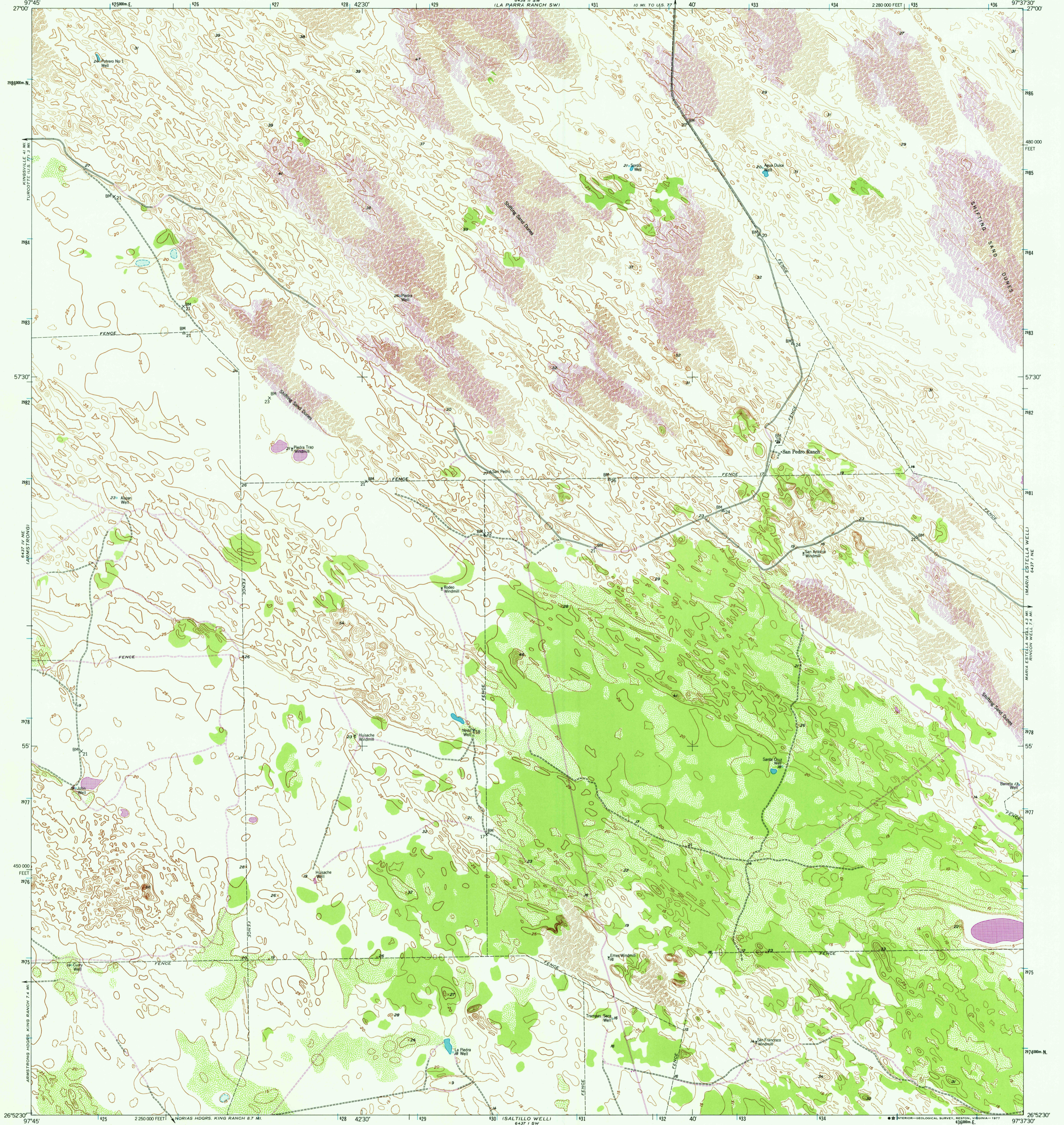


6437 N
6437 E
1:25000

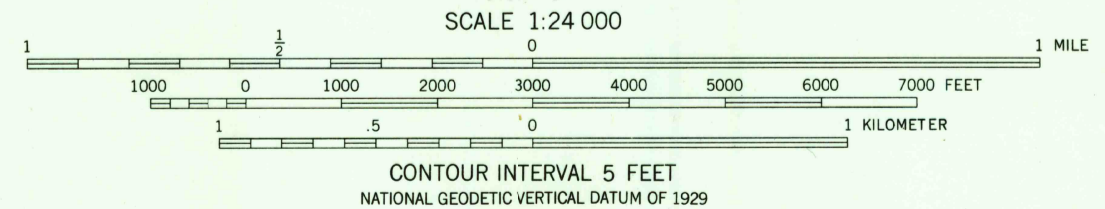
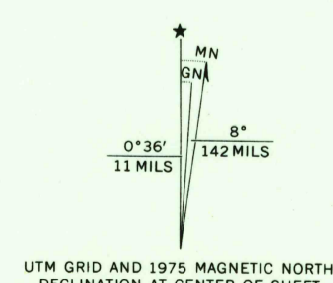
UNITED STATES
DEPARTMENT OF THE INTERIOR
GEOLOGICAL SURVEY

SAN PEDRO RANCH QUADRANGLE
TEXAS-KENEDY CO.
7.5 MINUTE SERIES (TOPOGRAPHIC)
NW/4 SALTILLO RANCH 15 QUADRANGLE

6438 N
6438 E
1:25000



Mapped, edited, and published by the Geological Survey
Control by USGS and NOS/NOAA
Culture and drainage in part compiled from aerial photographs taken 1953. Topography by planetable surveys 1956
Polyconic projection. 1927 North American datum
10,000-foot grid based on Texas coordinate system, south zone
1000-meter Universal Transverse Mercator grid ticks, zone 14, shown in blue
Revisions shown in purple compiled from aerial photographs taken 1975. This information not field checked
Shifting sand dunes shown in purple
Stabilized sand dunes shown in brown



ROAD CLASSIFICATION
Light-duty ———— Unimproved ————

DEC 21 1977
SAN PEDRO RANCH, TEX.
NW/4 SALTILLO RANCH 15 QUADRANGLE
N2652.5—W9737.5/7.5

USGS
Historical File
Topographic Division
1956
MINOR REVISIONS 1974
AMS 6437 1 NW - SERIES V882
PHOTOREVISED 1975

THIS MAP COMPLIES WITH NATIONAL MAP ACCURACY STANDARDS
FOR SALE BY U.S. GEOLOGICAL SURVEY, DENVER, COLORADO 80225, OR RESTON, VIRGINIA 22092
A FOLDER DESCRIBING TOPOGRAPHIC MAPS AND SYMBOLS IS AVAILABLE ON REQUEST

2697-343

2800