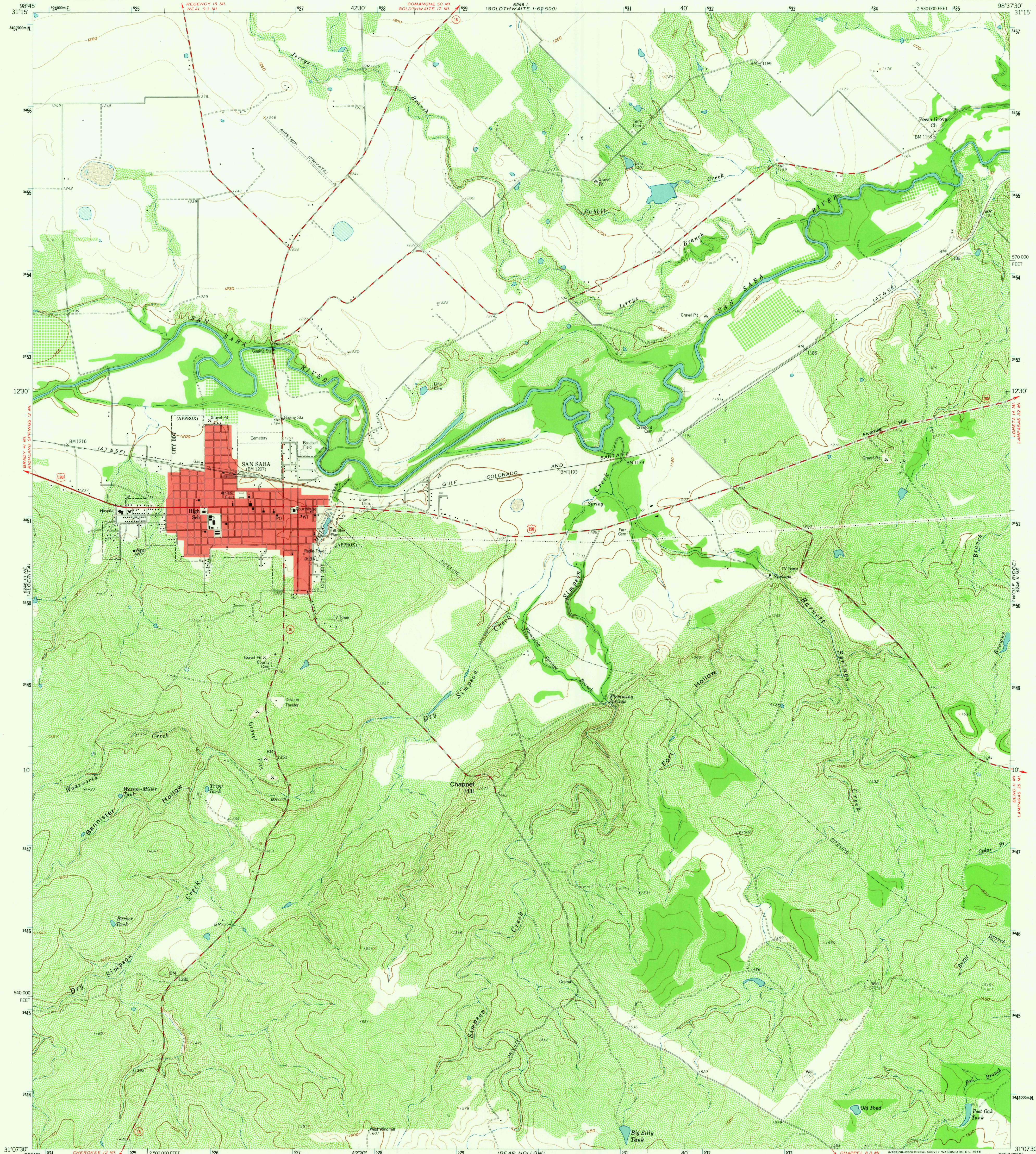
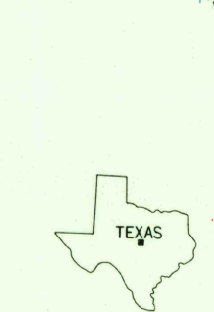
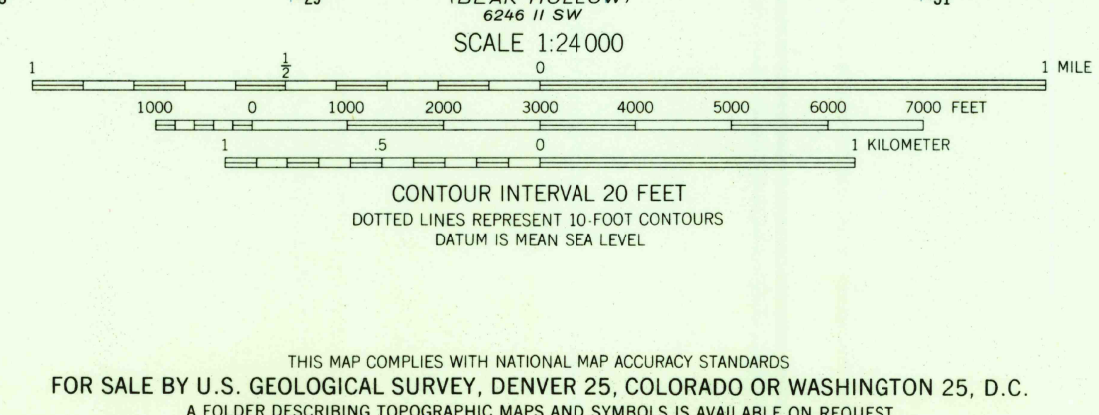
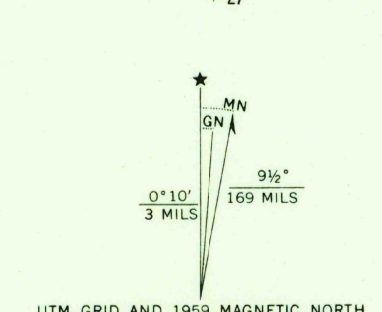


UNITED STATES  
DEPARTMENT OF THE INTERIOR  
GEOLOGICAL SURVEY

SAN SABA QUADRANGLE  
TEXAS-SAN SABA CO.  
7.5 MINUTE SERIES (TOPOGRAPHIC)  
NW 1/4 SAN SABA 15 QUADRANGLE  
2 530 000 FEET



Mapped, edited, and published by the Geological Survey  
Control by USGS and USC&GS  
Topography from aerial photographs by photogrammetric methods  
Aerial photographs taken 1957. Field check 1959  
Polyconic projection. 1927 North American datum  
10,000-foot grid based on Texas coordinate system,  
central zone  
1000-meter Universal Transverse Mercator grid ticks,  
zone 14, shown in blue  
Red tint indicates area in which only  
landmark buildings are shown  
Unchecked elevations are shown in brown



ROAD CLASSIFICATION  
Heavy-duty ——— Light-duty ———  
Medium-duty ——— Unimproved dirt ———  
U.S. Route ——— State Route ———  
SAN SABA, TEX.  
NW 1/4 SAN SABA 15 QUADRANGLE  
N3107.5-W9837.5/7.5  
1959  
AMS 6246 II NW-SERIES V882

4285  
FEB 15 1965