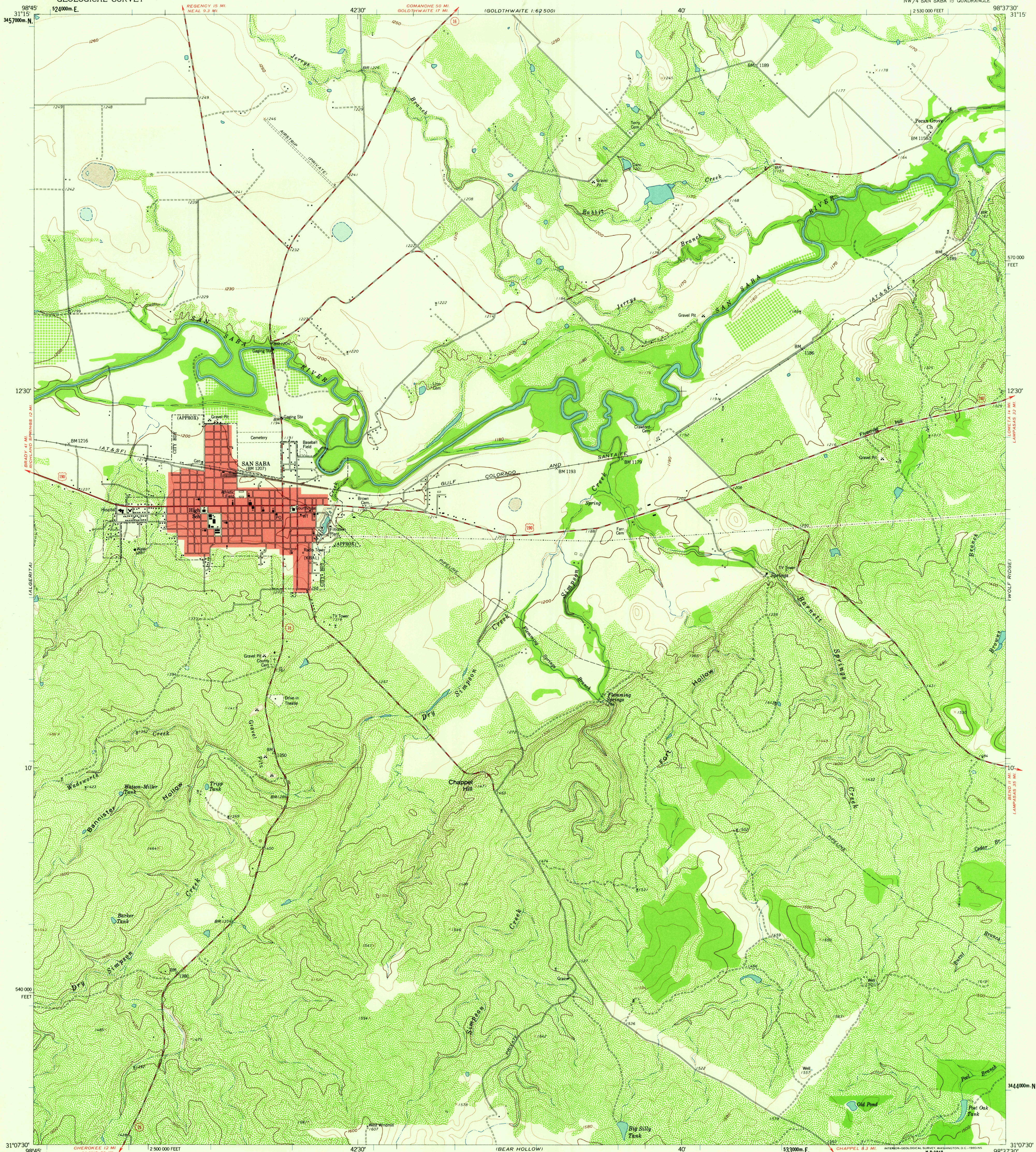


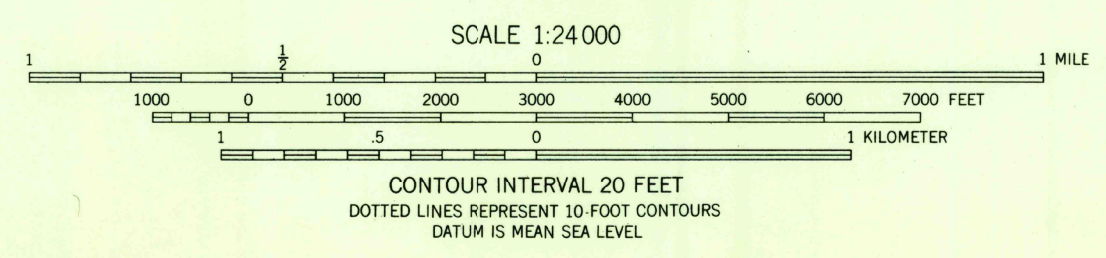
UNITED STATES
DEPARTMENT OF THE INTERIOR
GEOLOGICAL SURVEY

SAN SABA QUADRANGLE
TEXAS-SAN SABA CO.
7.5 MINUTE SERIES (TOPOGRAPHIC)
NW 1/4 SAN SABA 15' QUADRANGLE



Maped, edited, and published by the Geological Survey
Control by USGS and USC&GS
Topography from aerial photographs by photogrammetric methods
Aerial photographs taken 1957. Field check 1959
Polyconic projection. 1927 North American datum
10,000-foot grid based on Texas coordinate system,
central zone
1000-meter Universal Transverse Mercator grid ticks,
zone 14, shown in blue
Red tint indicates area in which only
landmark buildings are shown
Unchecked elevations are shown in brown

TRUE NORTH
MAGNETIC NORTH
APPROXIMATE MEAN
DECLINATION, 1959



ROAD CLASSIFICATION
Heavy-duty ——— Light-duty ———
Medium-duty ——— Unimproved dirt ———
U.S. Route ——— State Route ———
U.S.G.S.
FILE COPY
TOPOGRAPHIC DIVISION
SAN SABA, TEX.
NW 1/4 SAN SABA 15' QUADRANGLE
N3107.5-W9837.5/7.5
1959

NOV 1 1960
2015