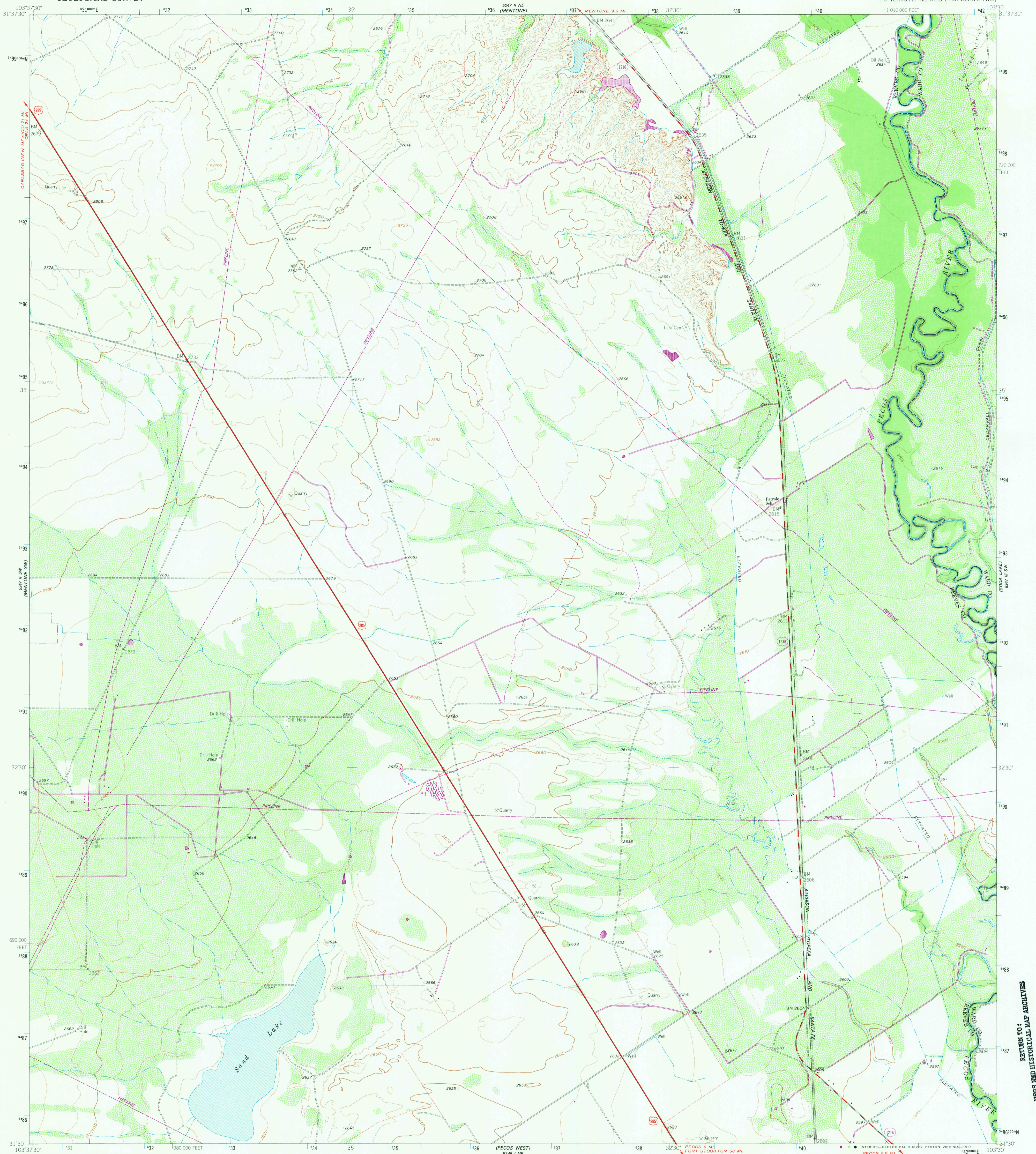


5247 II NW  
MONTONE

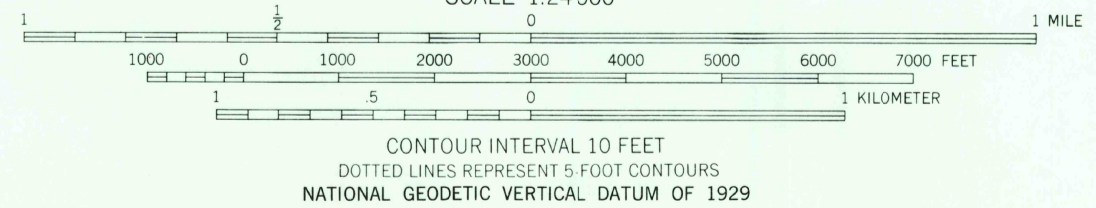
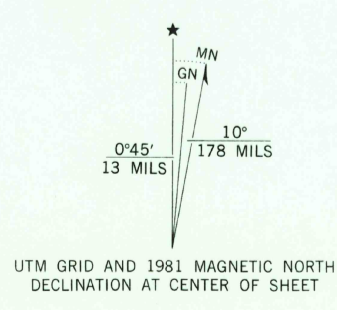
5247 III NW  
SAND LAKE NW



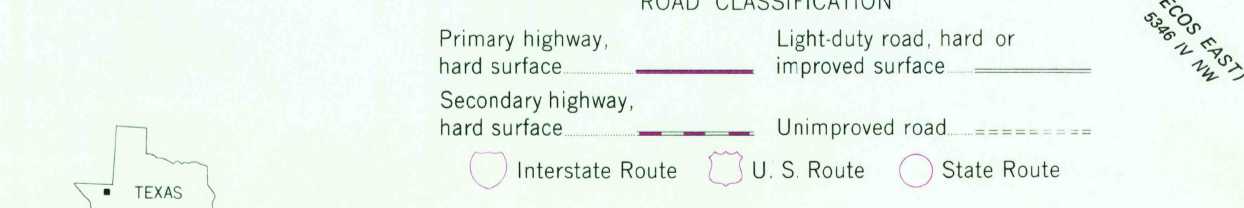
5247 IV NW  
MONTONE SW

Mapped, edited, and published by the Geological Survey

Control by USGS and USC&GS  
Topography by photogrammetric methods from aerial photographs taken 1958. Field checked 1961  
Polyconic projection. 1927 North American datum  
10,000-foot grid based on Texas coordinate system,  
central zone  
1000 meter Universal Transverse Mercator grid ticks,  
zone 13, shown in blue  
Fine red dashed lines indicate selected fence and field lines where  
generally visible on aerial photographs. This information is un-checked  
To place on the predicted North American Datum 1983  
move the projection lines 11 meters south and  
43 meters east as shown by dashed corner ticks  
Revisions shown in purple compiled from aerial photographs taken  
1979. Map edited 1981. This information not field checked



SCALE 1:24 000  
CONTOUR INTERVAL 10 FEET  
DOTTED LINES REPRESENT 5 FOOT CONTOURS  
NATIONAL GEODETIC VERTICAL DATUM OF 1929



DEC 15 1981

SAND LAKE, TEX.  
N3130-W10330/7.5  
1961  
PHOTOREVISED 1981  
DMA 5247 II SE-SERIES V882

RETURN TO:  
USGS AND HISTORICAL MAP ARCHIVES

5247 IV NW  
MONTONE SW

5247 III NW  
SAND LAKE NW