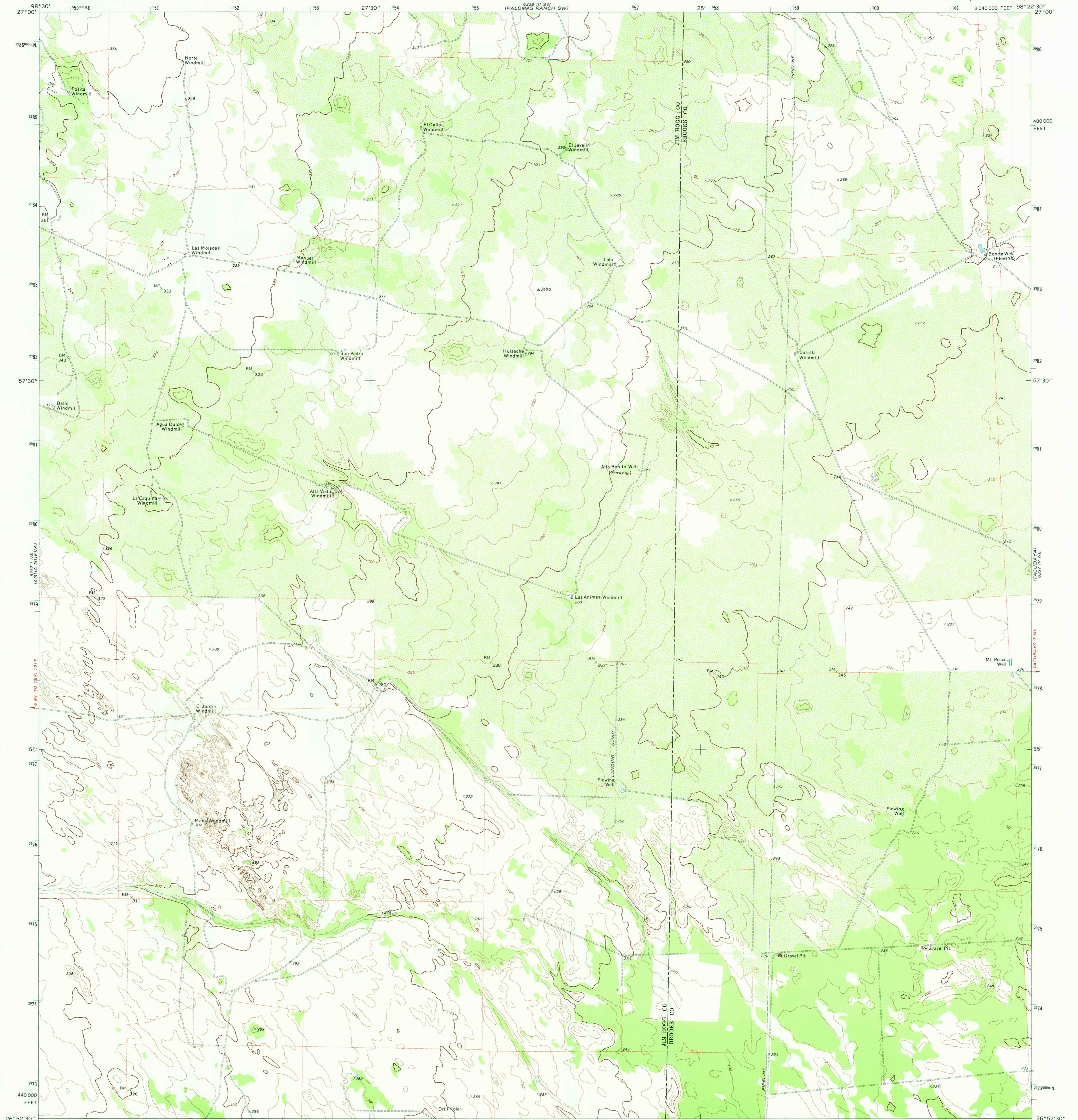


6337 IV SE  
PALOMAS RANCH

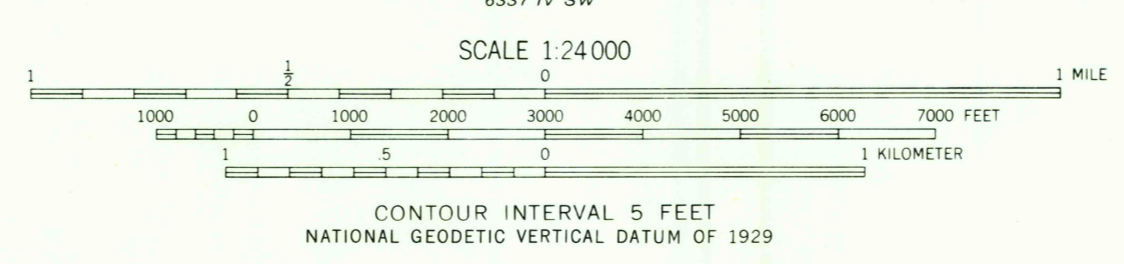
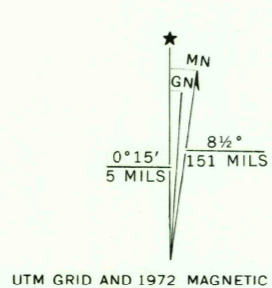
UNITED STATES  
DEPARTMENT OF THE INTERIOR  
GEOLOGICAL SURVEY

SANTA ELENA NW QUADRANGLE  
TEXAS  
7.5 MINUTE SERIES (TOPOGRAPHIC)

6337 IV SE  
PALOMAS RANCH SW



Mapped, edited, and published by the Geological Survey  
Control by USGS and USC&GS  
Topography by photogrammetric methods from aerial  
photographs taken 1970. Field checked 1972  
Projection and 10,000-foot grid ticks: Texas  
coordinate system, south zone (Lambert conformal conic)  
1000-meter Universal Transverse Mercator grid ticks,  
zone 14, shown in blue. 1927 North American datum  
Fine red dashed lines indicate selected fence lines



ROAD CLASSIFICATION

Primary highway, hard surface	Light-duty road, hard or improved surface
Secondary highway, hard surface	Unimproved road
Interstate Route	U.S. Route
	State Route

APR 8 1975  
SANTA ELENA NW, TEX.  
N2652.5-W9822.5/7.5

THIS MAP COMPLIES WITH NATIONAL MAP ACCURACY STANDARDS  
FOR SALE BY U.S. GEOLOGICAL SURVEY, DENVER, COLORADO 80225, OR RESTON, VIRGINIA 22092  
A FOLDER DESCRIBING TOPOGRAPHIC MAPS AND SYMBOLS IS AVAILABLE ON REQUEST

1972  
AMS 6337 IV NW—SERIES W82

SANTA ELENA SE  
6337 IV SE