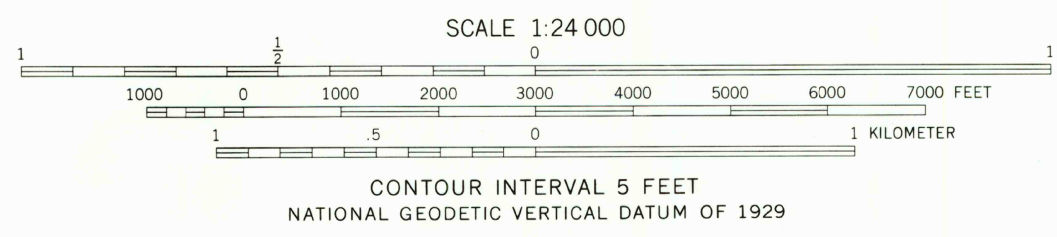
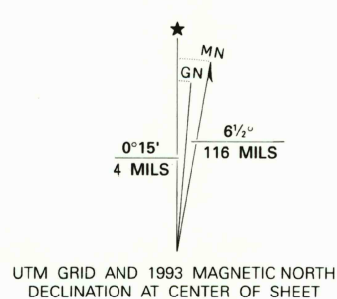
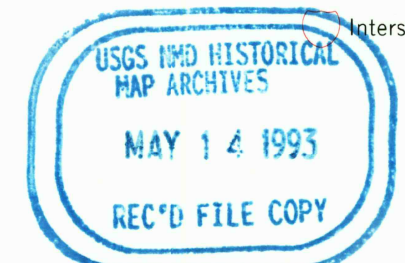


Produced by the United States Geological Survey
Control by USGS and NOS/NOAA
Compiled from aerial photographs taken 1970
Field checked 1972
North American Datum of 1927 (NAD 27). Projection and
10,000-foot grid ticks: Texas Coordinate System, south zone
(Lambert Conformal Conic). 1,000-meter Universal Transverse
Mercator grid ticks, zone 14, shown in blue.
The difference between NAD 27 and North American Datum of
1983 (NAD 83) for 7.5 minute intersections is given in USGS
Bulletin 1875. The NAD 83 is shown by dashed corner ticks.
Fine red dashed lines indicate selected fence and field lines where
generally visible on aerial photographs. This information is unchecked
Photorevised from 1991 source; no major culture
or drainage changes observed. Boundaries and names
verified 1993



SCALE 1:24 000
CONTOUR INTERVAL 5 FEET
NATIONAL GEODETIC VERTICAL DATUM OF 1929
THIS MAP COMPLIES WITH NATIONAL MAP ACCURACY STANDARDS
FOR SALE BY U.S. GEOLOGICAL SURVEY, DENVER, COLORADO 80225, OR RESTON, VIRGINIA 22092
A FOLDER DESCRIBING TOPOGRAPHIC MAPS AND SYMBOLS IS AVAILABLE ON REQUEST



ROAD CLASSIFICATION

Primary highway, hard surface	Light-duty road, hard or improved surface
Secondary highway, hard surface	Unimproved road
Interstate Route	U.S. Route
	State Route

SANTA ELENA, TEX.
26098-G4-TF-024
1972
MINOR REVISION 1993
DMA 6337 IV SW-SERIES V/882

6337 IV NE
6337 IV SE
6337 IV SW
6337 IV NW

6337 IV NE
6337 IV SE
6337 IV SW
6337 IV NW