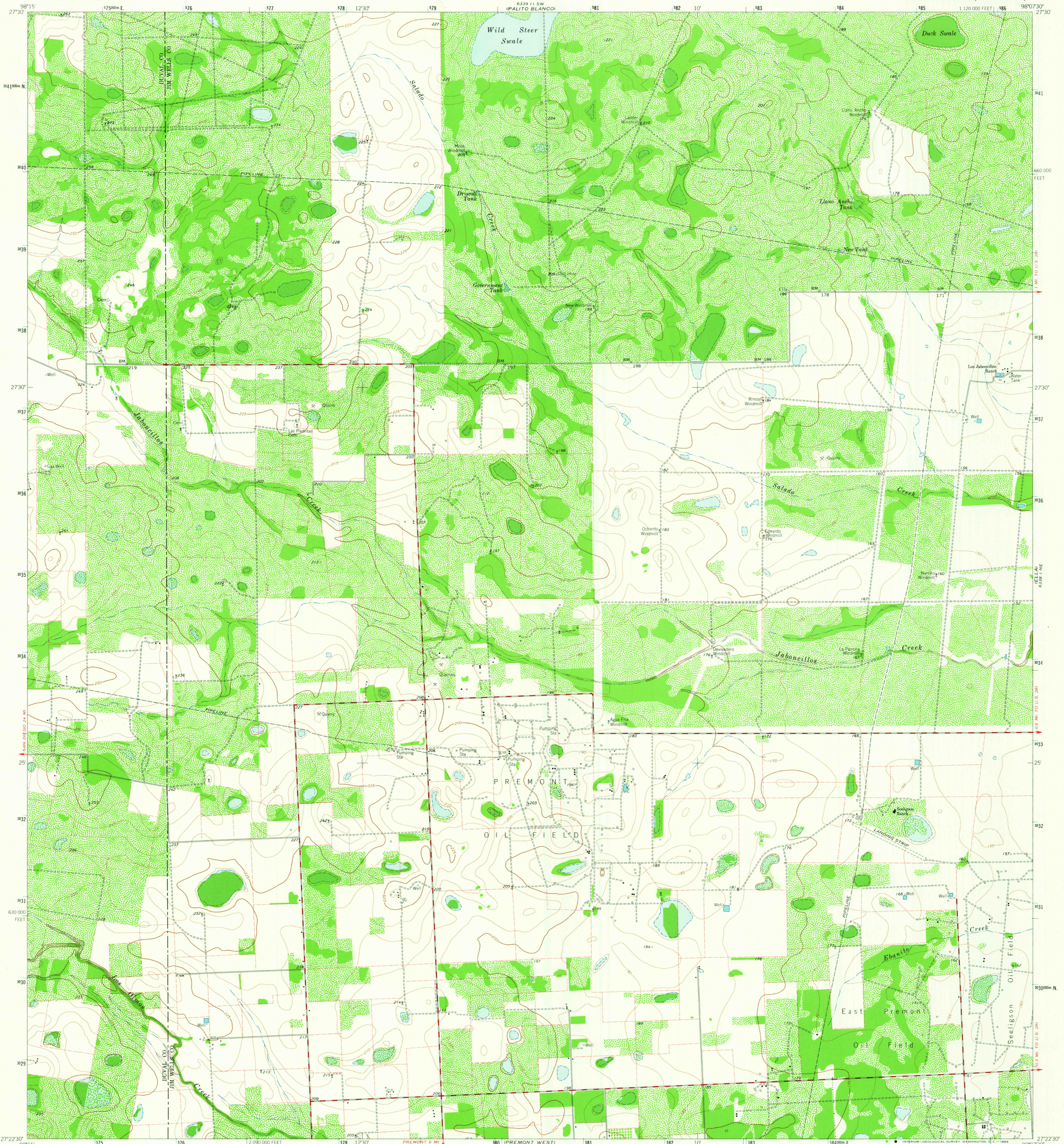
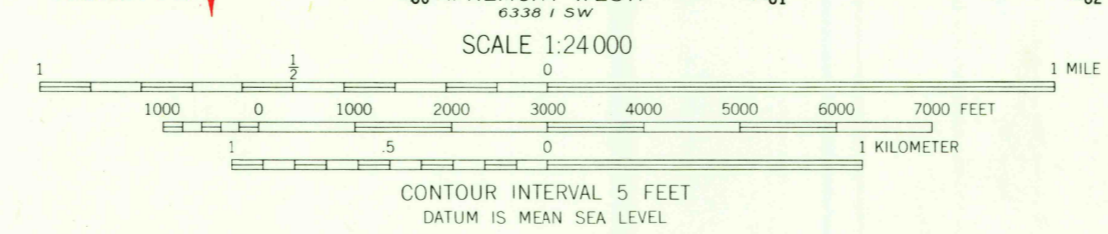
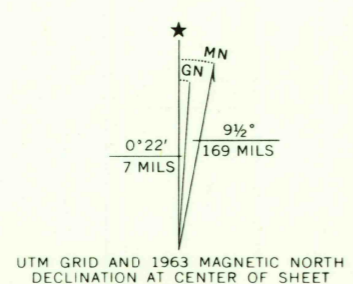


6338 11 SE
18EN BOLT SE1



Mapped, edited, and published by the Geological Survey
Control by USGS and USC&GS
Planimetry by photogrammetric methods from aerial photographs taken 1961. Topography by planetable surveys 1963
Polyconic projection: 1927 North American datum
10,000 foot grid based on Texas coordinate system, south zone
1000 meter Universal Transverse Mercator grid ticks, zone 14, shown in blue
Fine red dashed lines indicate selected fence lines



ROAD CLASSIFICATION
Medium-duty ——— Light-duty ———
Unimproved dirt - - - - -

THIS MAP COMPLIES WITH NATIONAL MAP ACCURACY STANDARDS
FOR SALE BY U.S. GEOLOGICAL SURVEY, DENVER 25, COLORADO OR WASHINGTON 25, D.C.
A FOLDER DESCRIBING TOPOGRAPHIC MAPS AND SYMBOLS IS AVAILABLE ON REQUEST

U.S.G.S. SEELIGSON RANCH, TEX.
N2722 5-W9807 5/7.5
1963
AMS 6338 11 NW-SERIES V882
FILE COPY
TOPOGRAPHIC DIVISION

22 23
PREMONT EAST
6338 11 SE